



The GIS-enabled Operational Decision Support System (ODSS) tool: from local farming data to pan Baltic story

Jonne Kotta, Mihhail Fetissov, Anneliis Peterson, Robert Aps

Estonian Marine Institute University of Tartu

Malmö

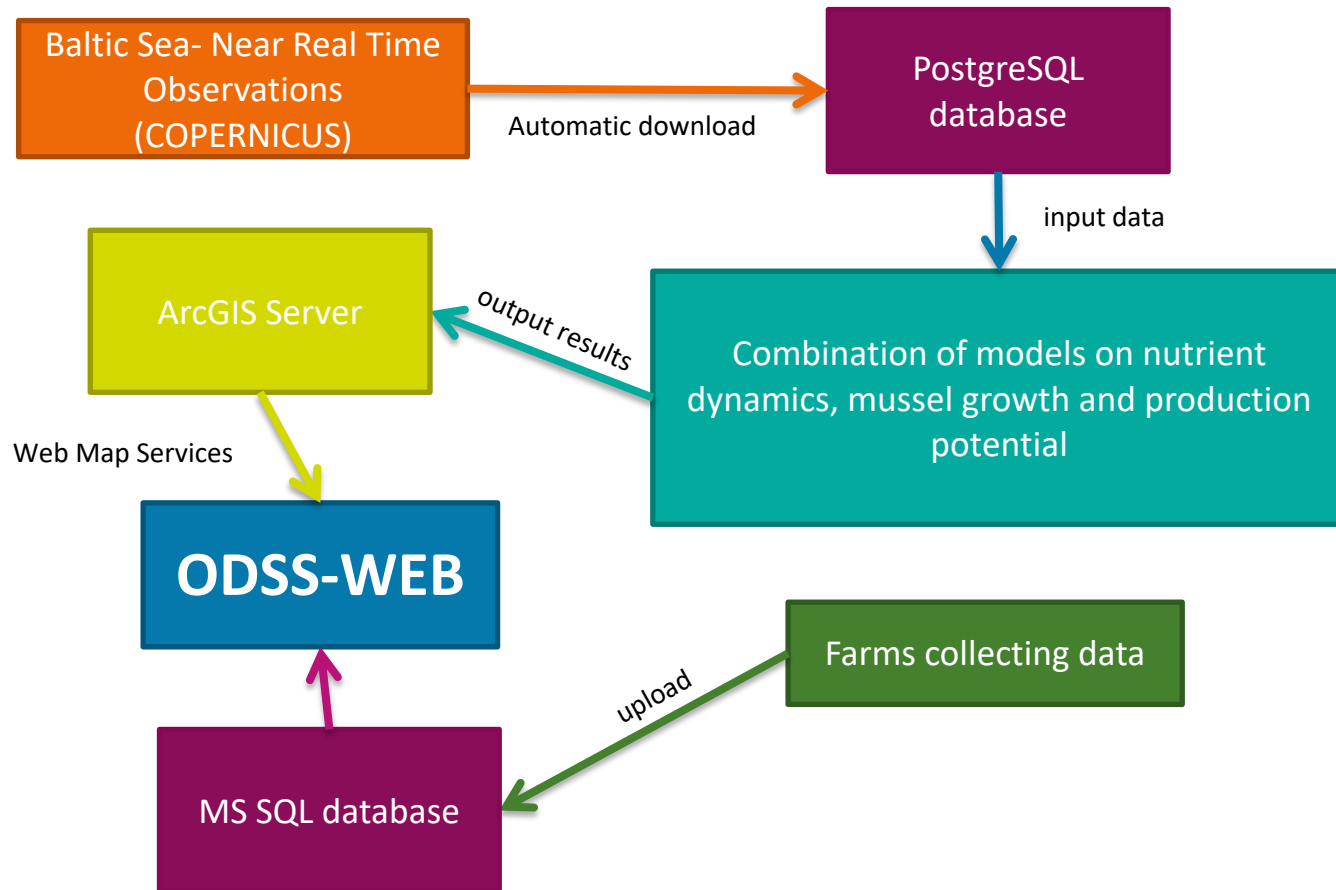
24 April 2019

www.sea.ee/bbg-odss

Operational Decision Support System (ODSS)

- The ODSS enables different end-users to make effective decisions about mussel farming in the Baltic Sea.
- These decisions are driven by the best existing monitoring and modelling data.
- As such the ODSS raises the capacity of any end-users to achieve the environmental, economic and socio-economic objectives of the mussel farming.

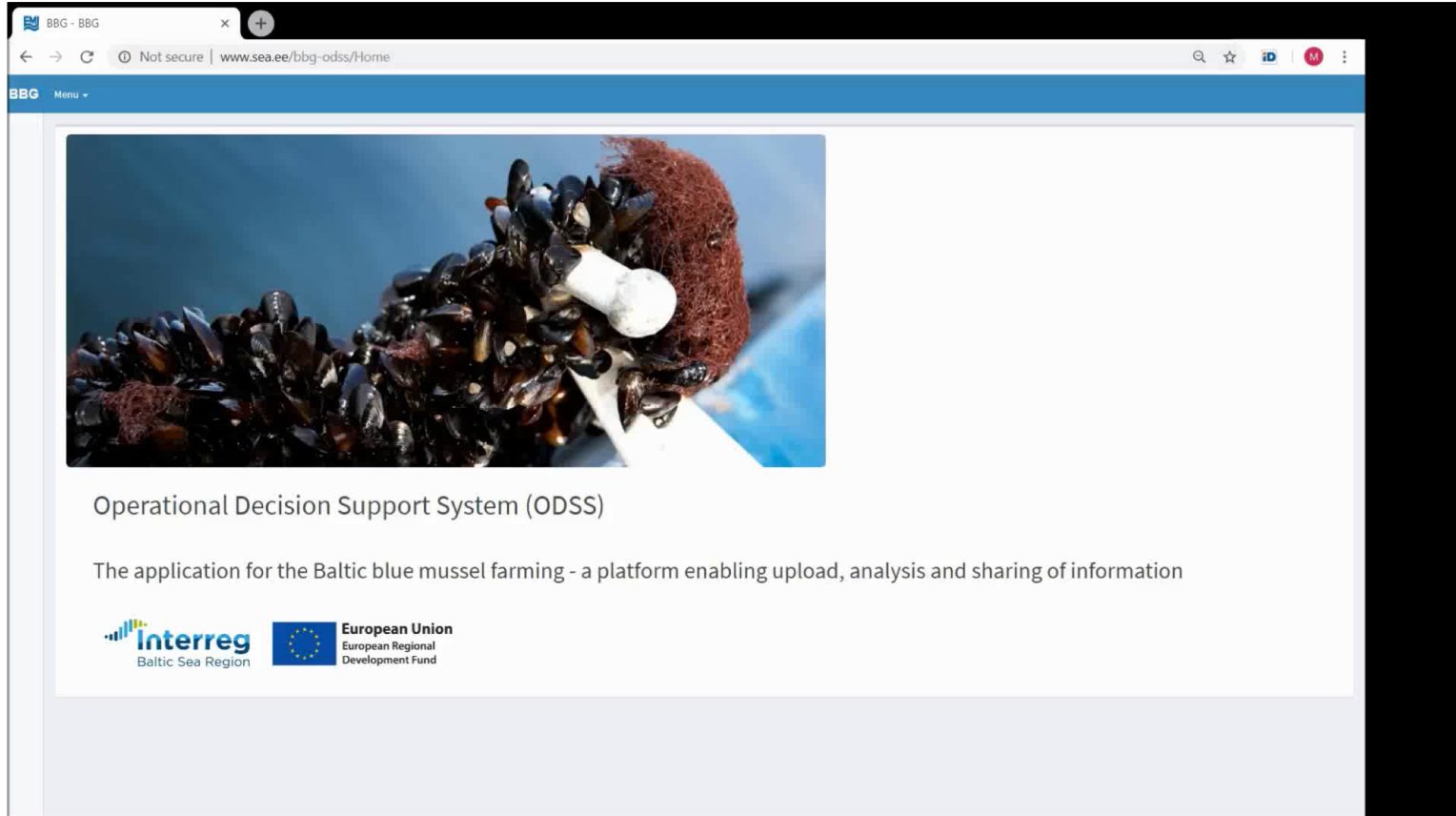
ODSS data flow principal diagram



Sections of the ODSS

- Farms & Additional Info
- Environmental Impact Assessment
- Earlier Impact Evidence
- Continuous Oceanographic Recordings
- Plan your FARM


Farms & Additional Info

A screenshot of a web browser displaying the BBG - ODSS website. The browser's address bar shows the URL 'www.sea.ee/bbg-odss/Home'. The website has a blue header with the 'BBG' logo and a 'Menu' dropdown. The main content area features a large image of a mussel farm with dark blue mussels and a red mesh structure. Below the image, the text 'Operational Decision Support System (ODSS)' is displayed, followed by a description: 'The application for the Baltic blue mussel farming - a platform enabling upload, analysis and sharing of information'. At the bottom, there are logos for 'Interreg Baltic Sea Region' and the 'European Union European Regional Development Fund'.

BBG - BBG


Not secure | www.sea.ee/bbg-odss/Home


BBG Menu



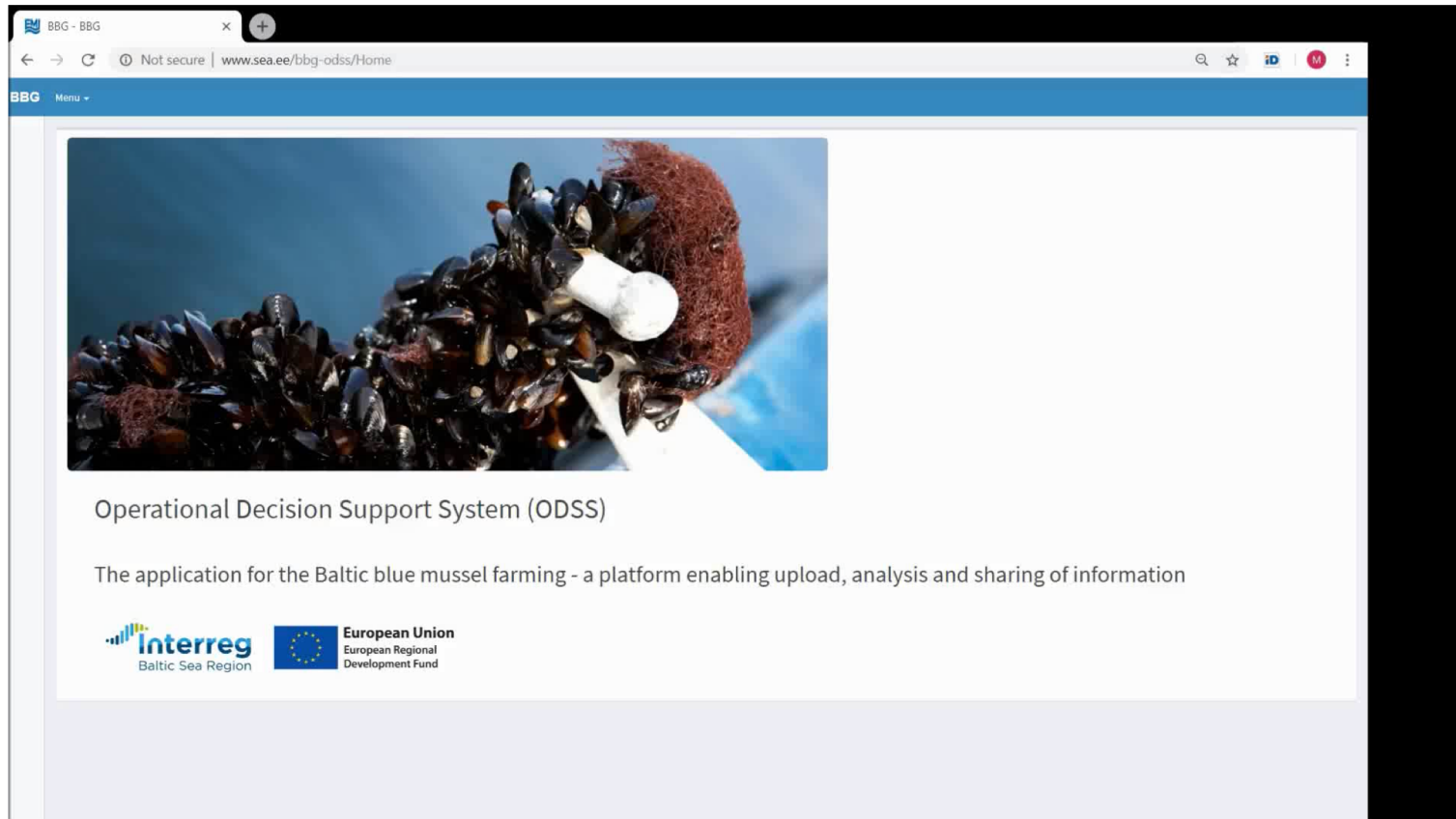
Operational Decision Support System (ODSS)

The application for the Baltic blue mussel farming - a platform enabling upload, analysis and sharing of information

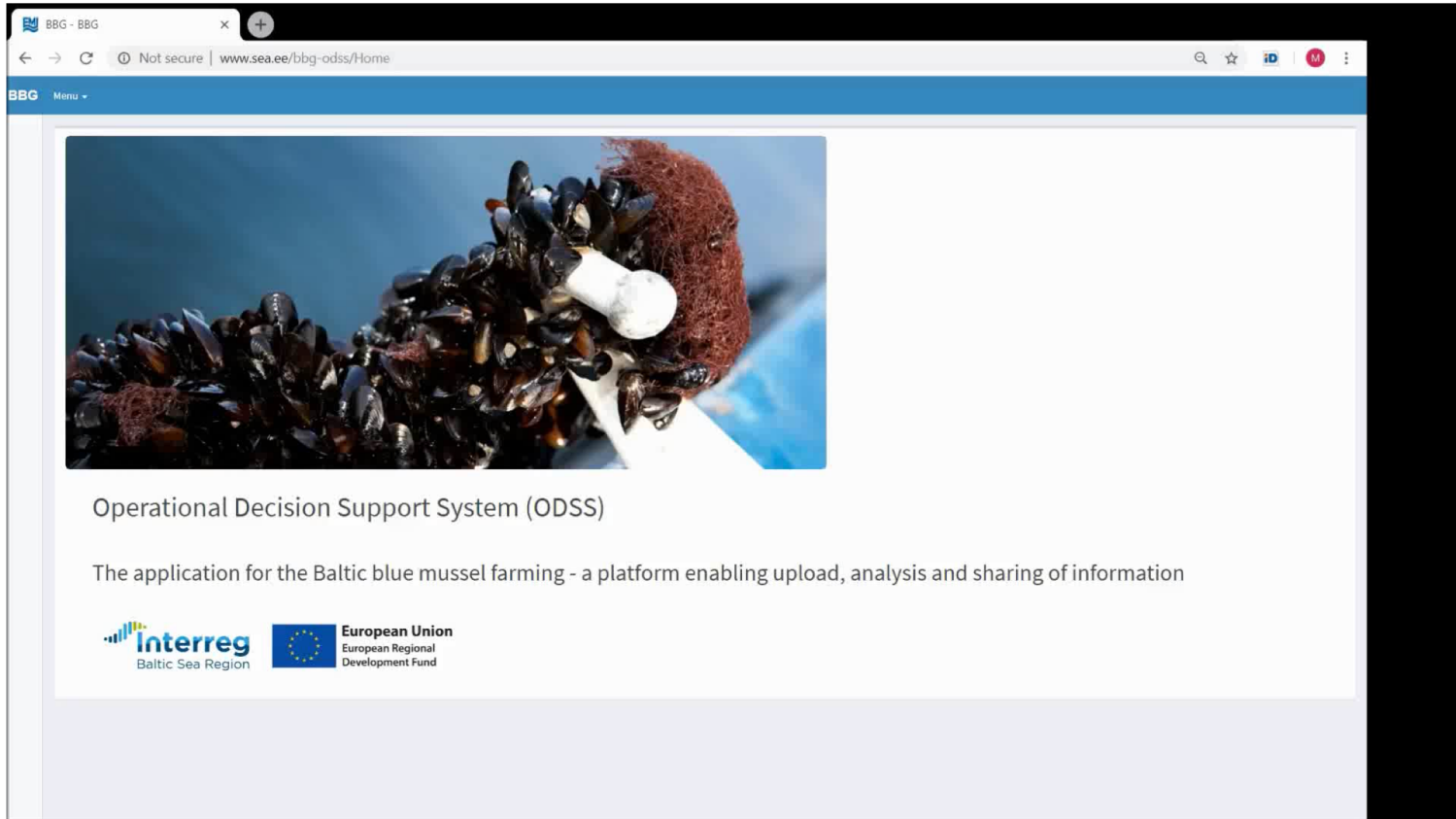
 **Interreg**
Baltic Sea Region

 **European Union**
European Regional
Development Fund

Environmental Impact Assessment




Earlier Impact Evidence

A screenshot of a web browser displaying the BBG - ODSS website. The browser's address bar shows the URL 'www.sea.ee/bbg-odss/Home'. The website has a blue header with the 'BBG' logo and a 'Menu' dropdown. The main content area features a large image of a mussel farm with dark mussels and a red biofouling mass. Below the image, the text 'Operational Decision Support System (ODSS)' is displayed, followed by a description: 'The application for the Baltic blue mussel farming - a platform enabling upload, analysis and sharing of information'. At the bottom, there are logos for 'Interreg Baltic Sea Region' and the 'European Union European Regional Development Fund'.

BBG - BBG


Not secure | www.sea.ee/bbg-odss/Home


BBG Menu



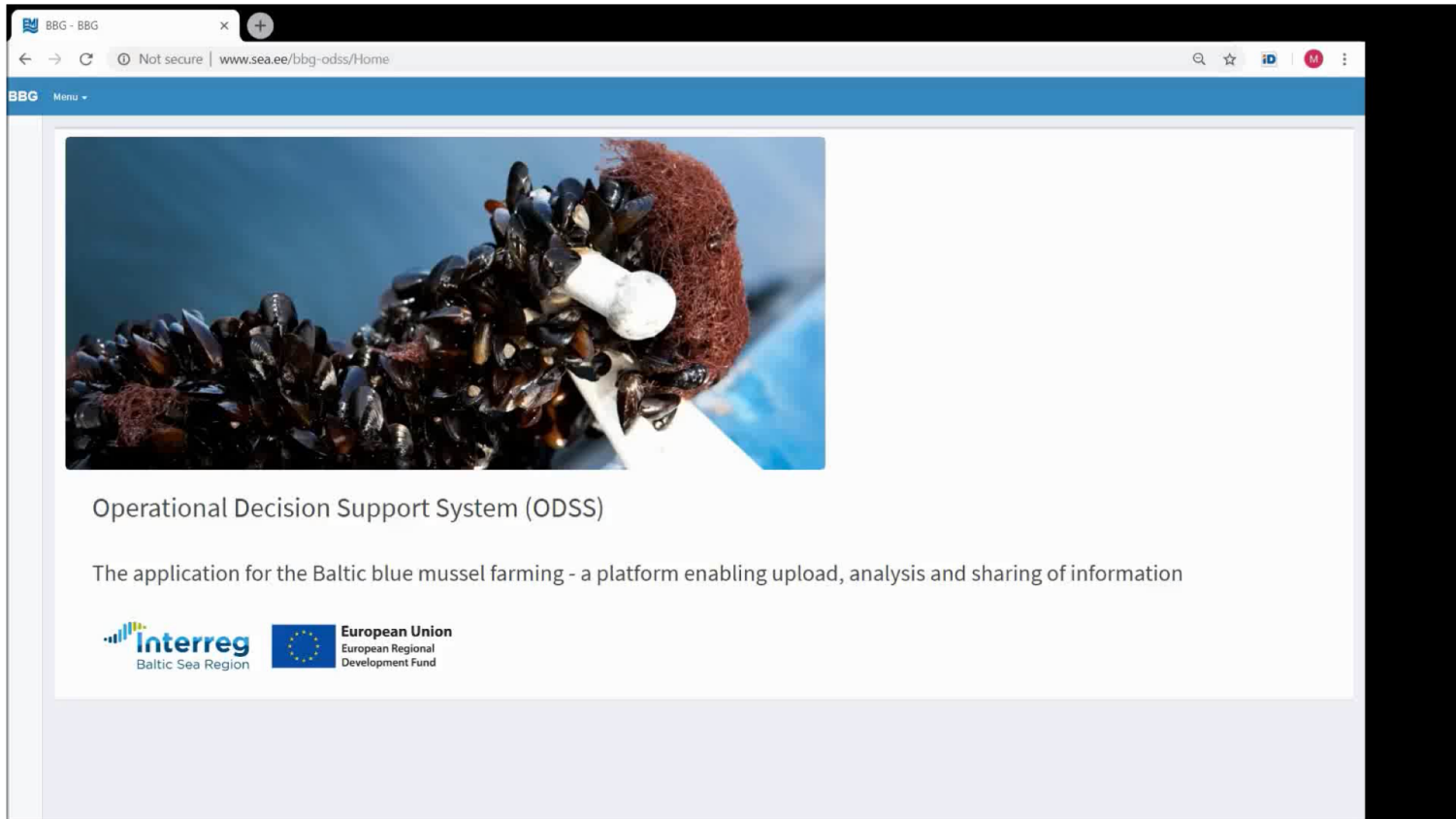
Operational Decision Support System (ODSS)

The application for the Baltic blue mussel farming - a platform enabling upload, analysis and sharing of information

 **Interreg**
Baltic Sea Region

 **European Union**
European Regional
Development Fund


Continuous Oceanographic Recordings

A screenshot of a web browser displaying the BBG - ODSS website. The browser's address bar shows the URL 'www.sea.ee/bbg-odss/Home'. The website has a blue header with the 'BBG' logo and a 'Menu' dropdown. The main content area features a large photograph of a mussel farm with dark blue mussels and a red mesh structure. Below the image, the text 'Operational Decision Support System (ODSS)' is displayed, followed by a description: 'The application for the Baltic blue mussel farming - a platform enabling upload, analysis and sharing of information'. At the bottom, there are logos for 'Interreg Baltic Sea Region' and the 'European Union European Regional Development Fund'.

BBG - BBG


Not secure | www.sea.ee/bbg-odss/Home


BBG Menu



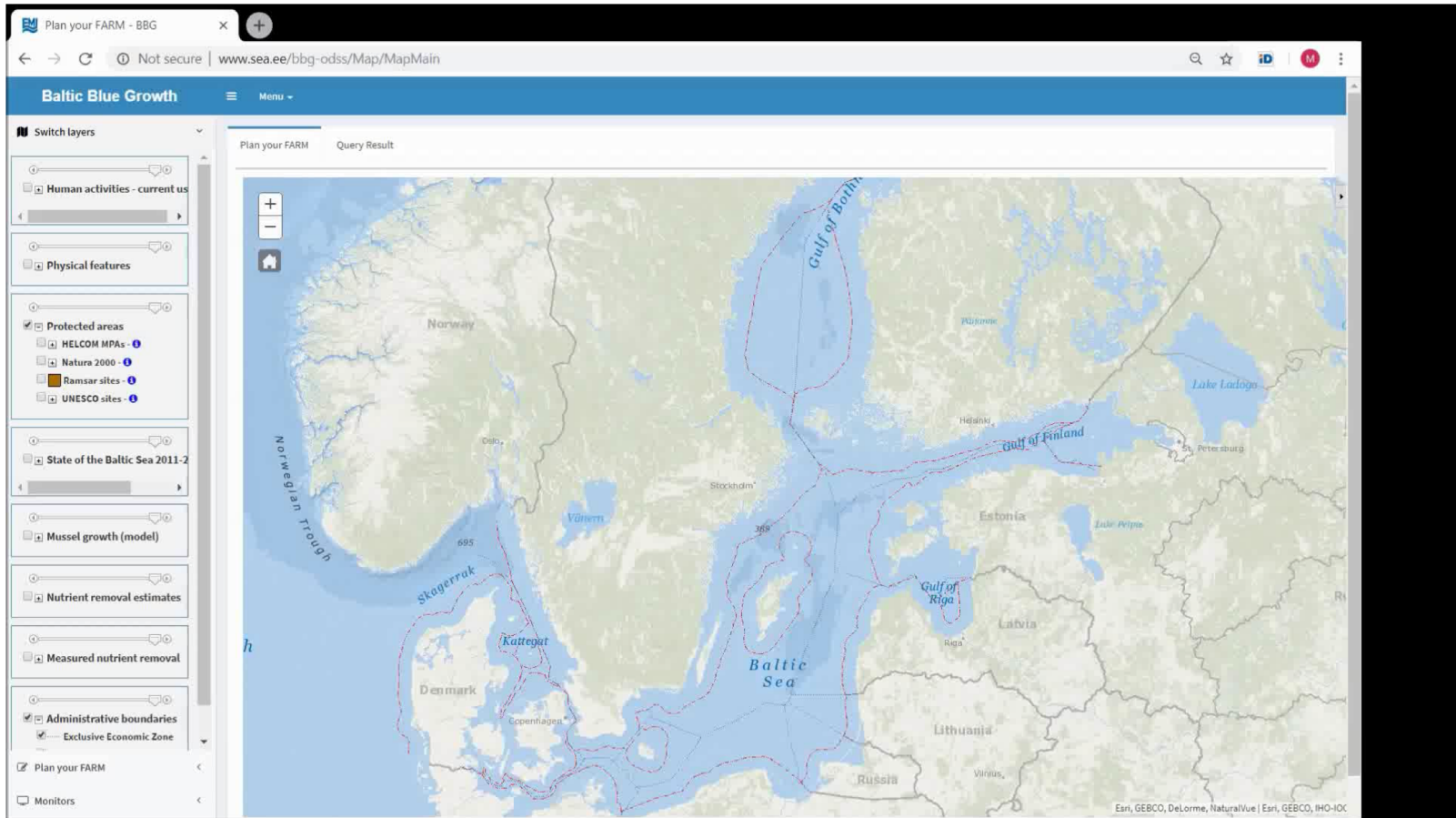
Operational Decision Support System (ODSS)

The application for the Baltic blue mussel farming - a platform enabling upload, analysis and sharing of information

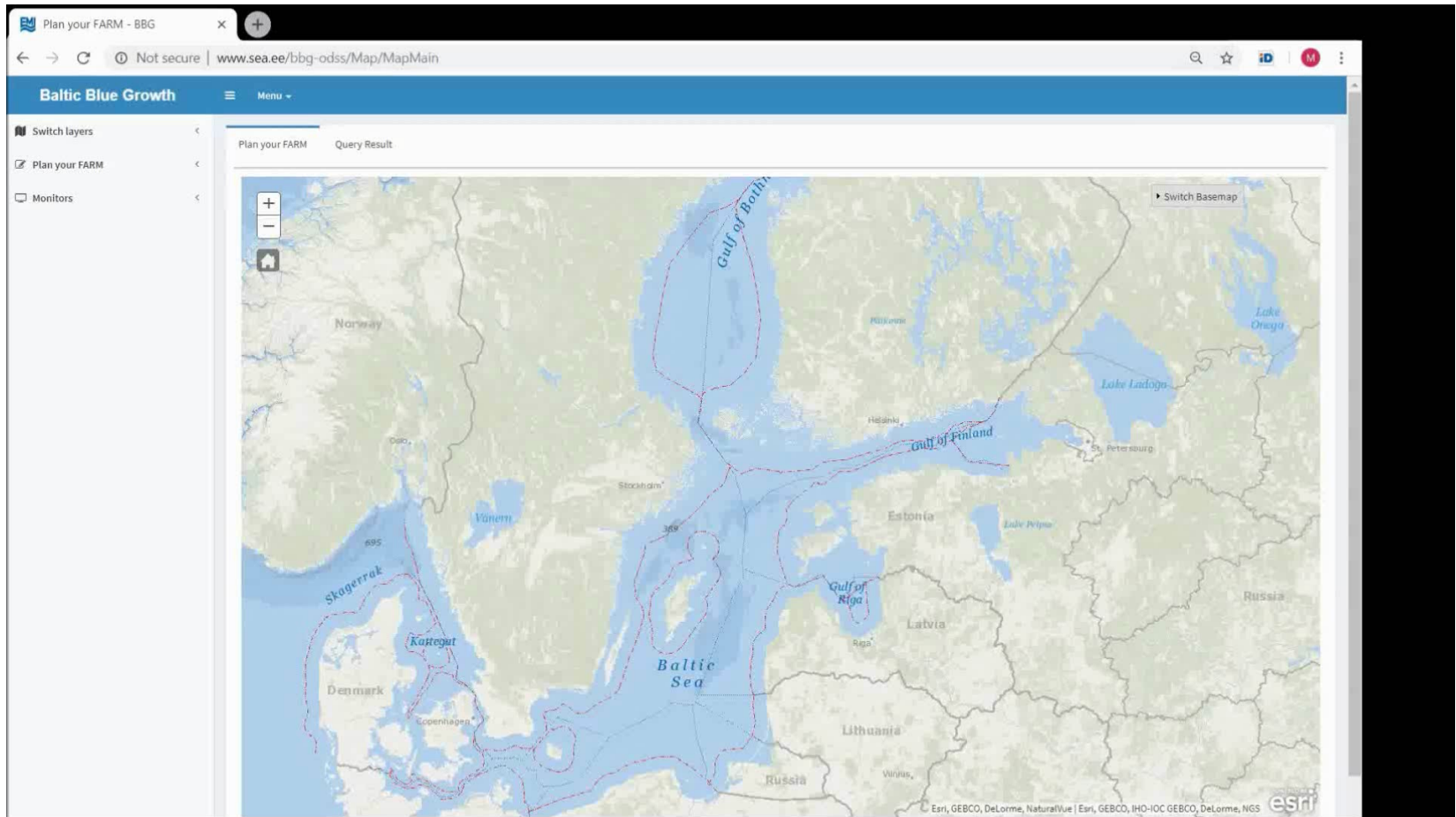
 **Interreg**
Baltic Sea Region

 **European Union**
European Regional
Development Fund

Plan your FARM

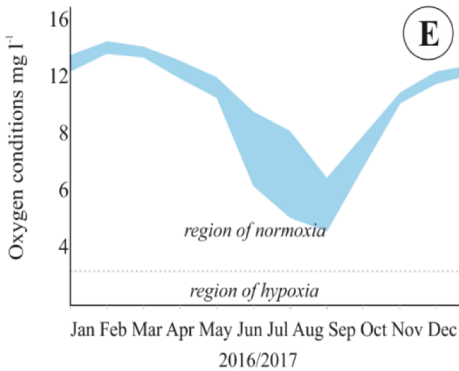
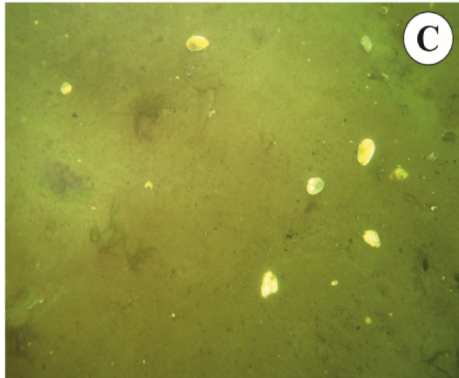


Plan your FARM

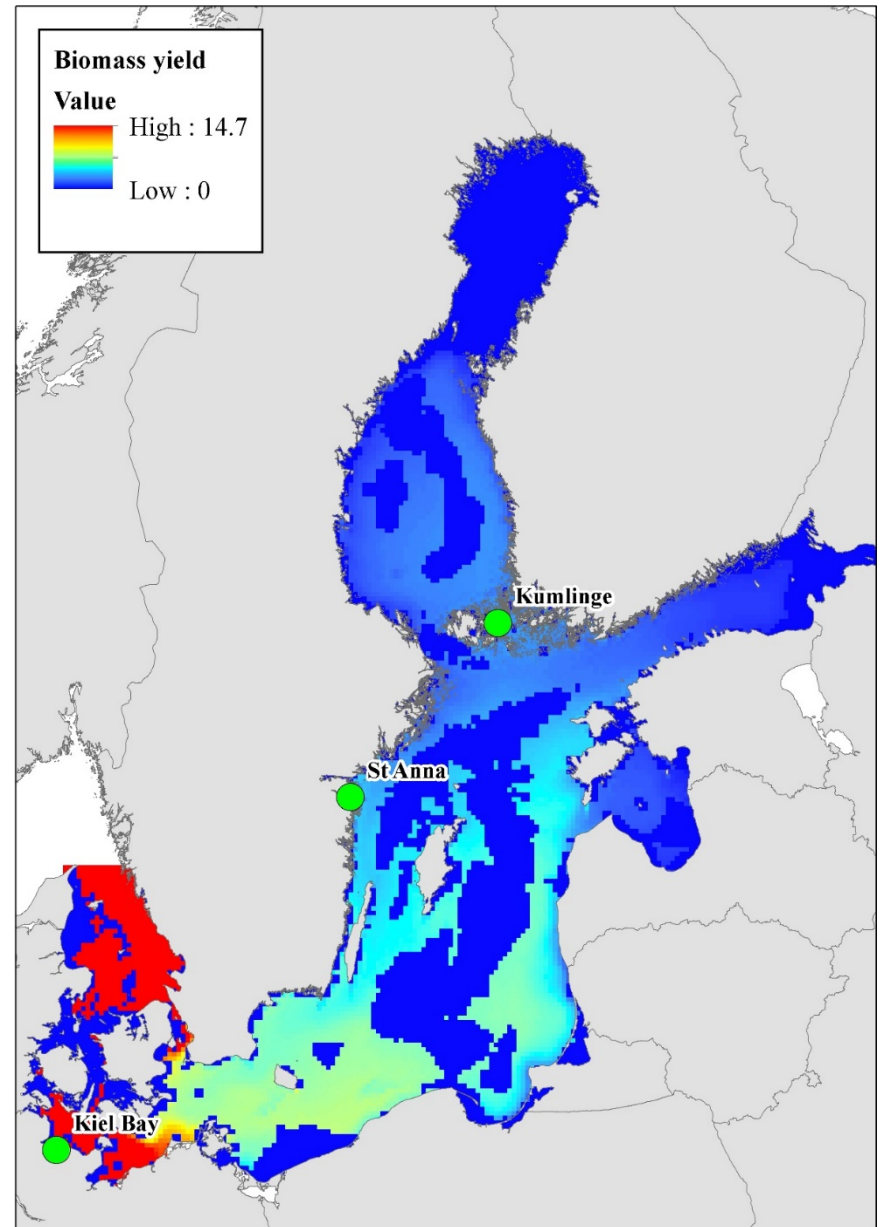
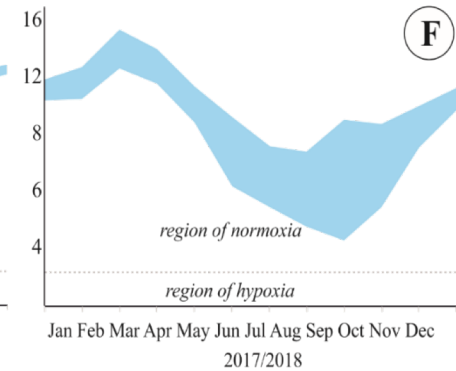


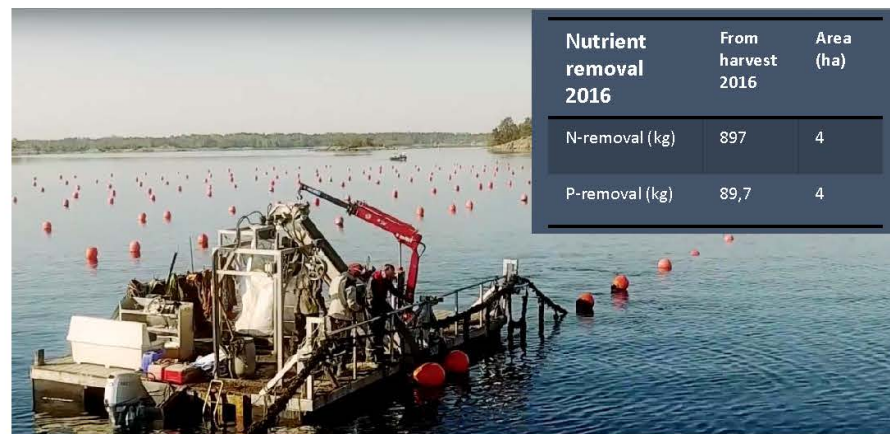
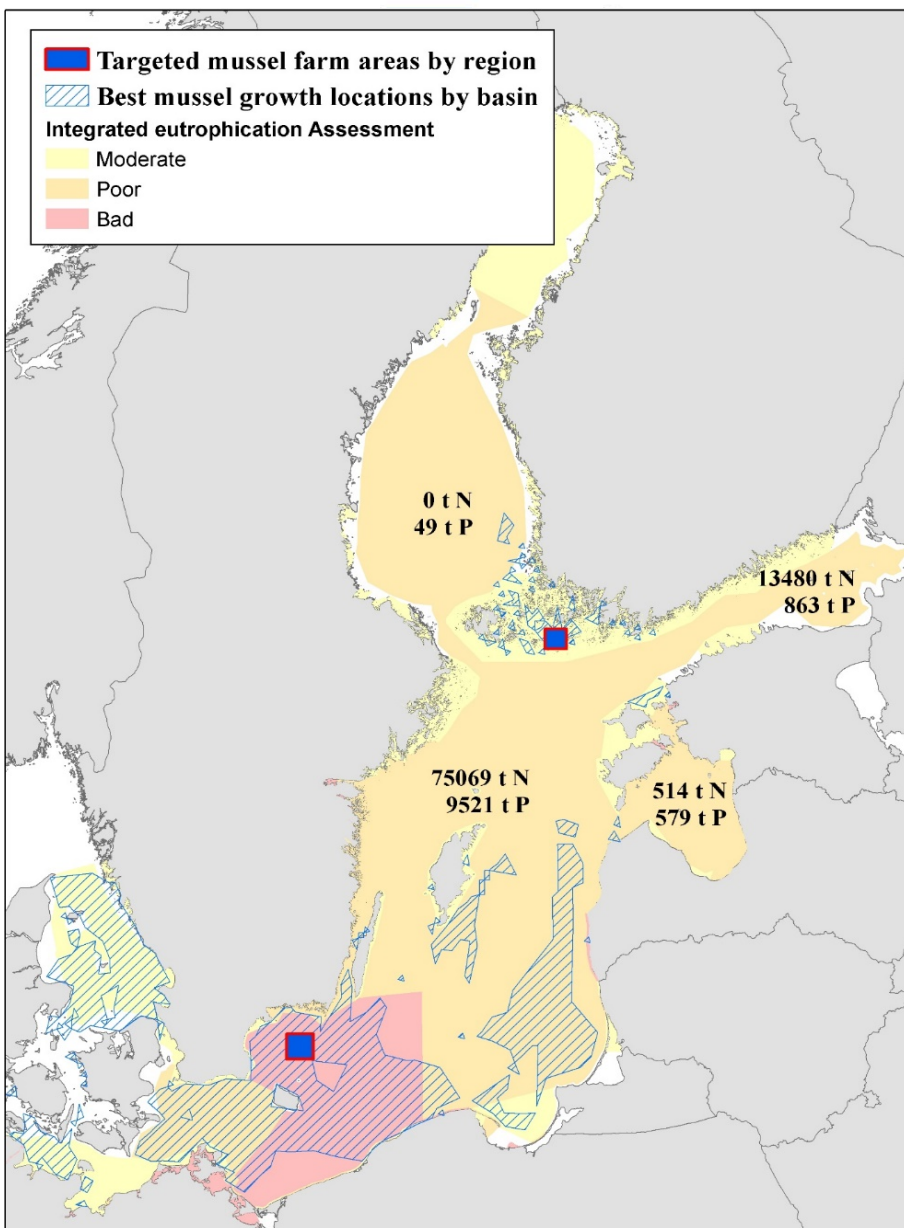
Baltic Blue Growth – <http://www.sea.ee/bbg-odss>

Sankt Anna mussel farm



Kiel mussel farm



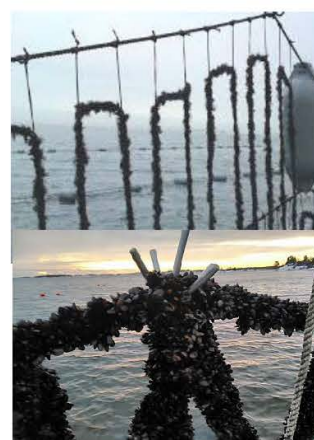


Nutrient removal 2016	From harvest 2016	Area (ha)
N-removal (kg)	897	4
P-removal (kg)	89,7	4

Methods:

Long line, 16 lines. 4ha. Farming depth at 1 – 10m. Water depth at farm-site is 20m. Total substrate length 24,000 m New Zealand fuzzy rope. Estimated growth rate is 1-3cm in 14 months and mussels are allowed to grow to harvest on collector ropes.

Date	Harvested Substrate (m)	Kg Harvested	Work Hrs (Harvest)	Kg/Hr
Dec-17	5250	15540	50	310,8
May-18	14350	53472	168	318,3
Sep-18	4400	12471	48	259,8
Totals	24000	81483	266	306,3



Farming time (months)	19
Substrate Length (m)	24 000
Total Harvest (t)	81.5
Production per Yr (t)	40.7
Kg/m rope	3.40
Investment Costs (€) (10 year amortization on investment of €156 873)	13661
Operating Costs (€)	7119
Investment Costs (€/Kg)	0.35
Operational Costs (€/Kg)	0.17
Total Cost (€/Kg)	0.52

Thank you for your attention!

<http://www.sea.ee/bbg-odss>

