



EUSBSR EU STRATEGY FOR THE BALTIC SEA REGION

”Alignment of funding”

Hans-Olof Stålgren
Swedish Board of Agriculture

No additional funding nor new programs

- Use the existing EU funds for the common goals!
- Use also other funding sources!
- Use transnational cooperation!



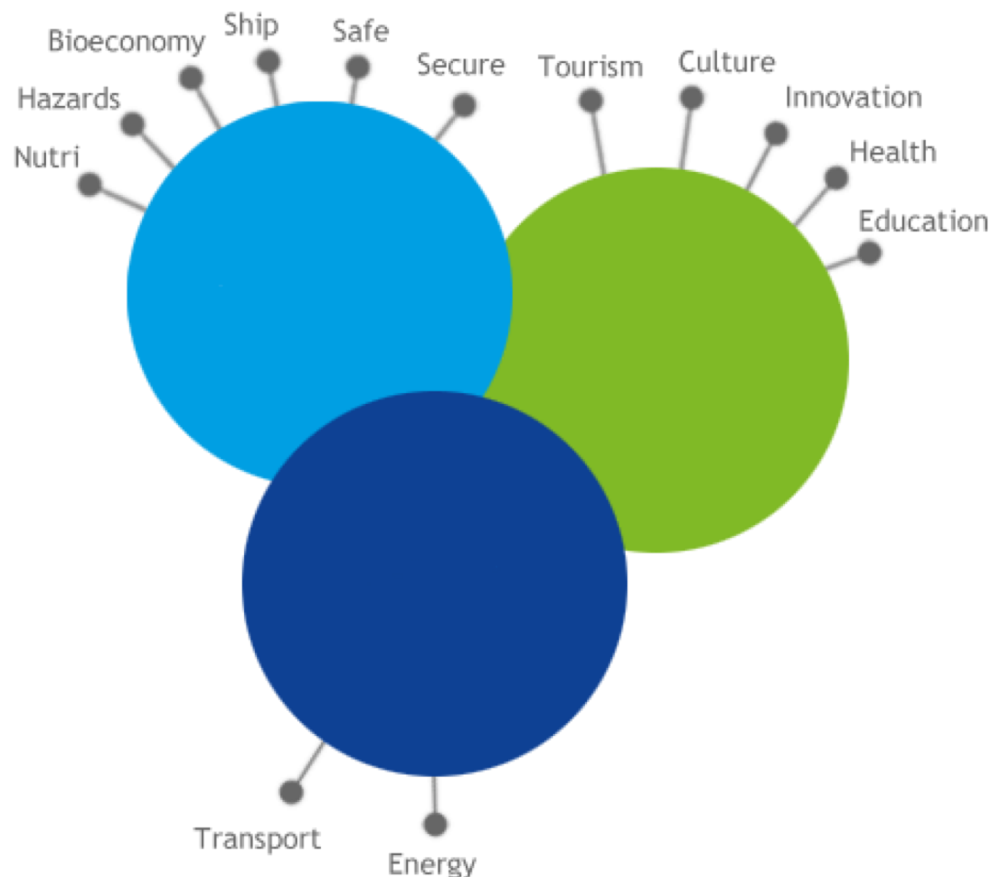
Not only the sea and the coast Not only the environment

- The whole countries
 - Finland
 - Estonia
 - Latvia
 - Lithuania
 - Poland
 - Germany
 - Denmark
 - Sweden
-
- Russia
 - Norway
 - Iceland
 - Belarus
- Save the Sea
 - Connect the region
 - Increase prosperity



13 policy areas - 4 horizontal actions

- Nutri
- Hazards
- Bioeconomy
- Ship
- Safe
- Secure
- Tourism
- Culture
- Innovation
- Health
- Education
- Transport
- Energy
- Horizontal actions



Spatial
Planning

Neighbours

Capacity

Climate

PAC - Policy Area Coordinator for Fishery/Aquaculture

- Increase in aquaculture production and sustainability
- Added value through cooperation within Baltic fisheries and aquaculture
- Coordinate actions for an increased sustainability in fishery and aquaculture
- Engaging the private sector in the bioeconomy
- Enhance the combined effects of the European Maritime and Fisheries Fund (EMFF) programmes
- Promote the regionalisation of the Common Fisheries Policy within BALTFISH

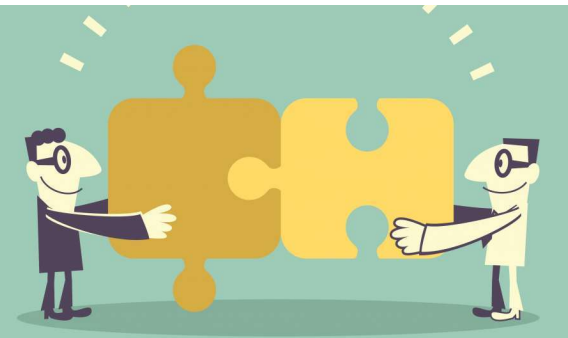
PAC Bioeconomy - Fishery and aquaculture

- Establishing and running a network for EMFF Managing Authorities, BSR-EMFF
- A part of the Bioeconomy Council in the Nordic Council of Ministers
- Together with PAC Agriculture, Rural Development and Forestry
- Revision of the EUSBSR Action Plan
- Recommending the EU Commission flagship status for projects
- Partner in the Blue Platform project, Alignment of funding work package



What is alignment of funding?

- =arrangement in a straight line or in correct relative positions.
- =a position of agreement or alliance.
- =forming in line
- =linking of organizational goals with the employees' personal goals.



Alignment, What, How, When....?

- Alignment with what?
The different national OP:s of EMFF or with other programs or with the EUSBSR?
- Alignment of what?
Rules, selection criteria, themes and timing of calls for proposals?
Contribution to the EUSBSR as a selection criteria.
- Alignment how?
- Alignment when?
- Alignment of other issues than funding i.e. regulations for aquaculture permissions



Bioeconomy creates global well-being
Value from forest, water and waste

What has happened so far?

- A BSR-EMFF meeting in Warsaw 2019 03 26 (3:rd meeting)
- And then
- We will make a survey with all MA:s to ask for possible alignments in the EMFF.
- Asking for inputs and comments from the Blue platform partners using the tools and results of their flagship projects
- A coming meeting with the other MA networks for EAFRD, ERDF and ESF in autumn, maybe October. Presenting the mapping of measures in funding funding programs
- The revision of the EUSBSR will ask for a stronger connection between the strategy and the large ESI funds.



EUSBSR EU STRATEGY FOR THE BALTIC SEA REGION

Hans-olof.Stalgren@jordbruksverket.se

www.balticsea-region.eu

www.jordbruksverket.se/ostersjostrategi

www.bsrbioeconomy.net/

www.regeringen.se/sverige-i-eu/eus-ostersjostrategi/