

Aquaculture thematic area

Efthalia Arvaniti, SUBMARINER Network

SUBMARINER MA 2019, Berlin

www.innoaquatech.eu



#InnoAquaTech

InnoAquaTech project –

Cross-border development and transfer of innovative and sustainable aquaculture technologies in the South Baltic area (2016-2019)

Service offer package for RAS investors and practitioners



InnoAquaTech


- Technical/scientific expertise
- A user-friendly Decision Support-Tool (DST)
- Investment guidelines
- Capacity building and match-making



International business study visits

- SV1: 3 days in Iceland
- SV2: 2 days in Belgium
- SV3: 2 days in Jutland, Denmark
- About gathering and sharing knowledge about innovative aquaculture business models
- Participants were from industry, business-support organisations, and R&D
- **Conclusion:** SVs can cover the demand for field knowledge transfer in innovation; participants are willing to pay for such a service.

InnoAquaTech Project Partners,
Advisory Board, and SUBMARINER
Network representatives,
meeting in Vejle, May 2019

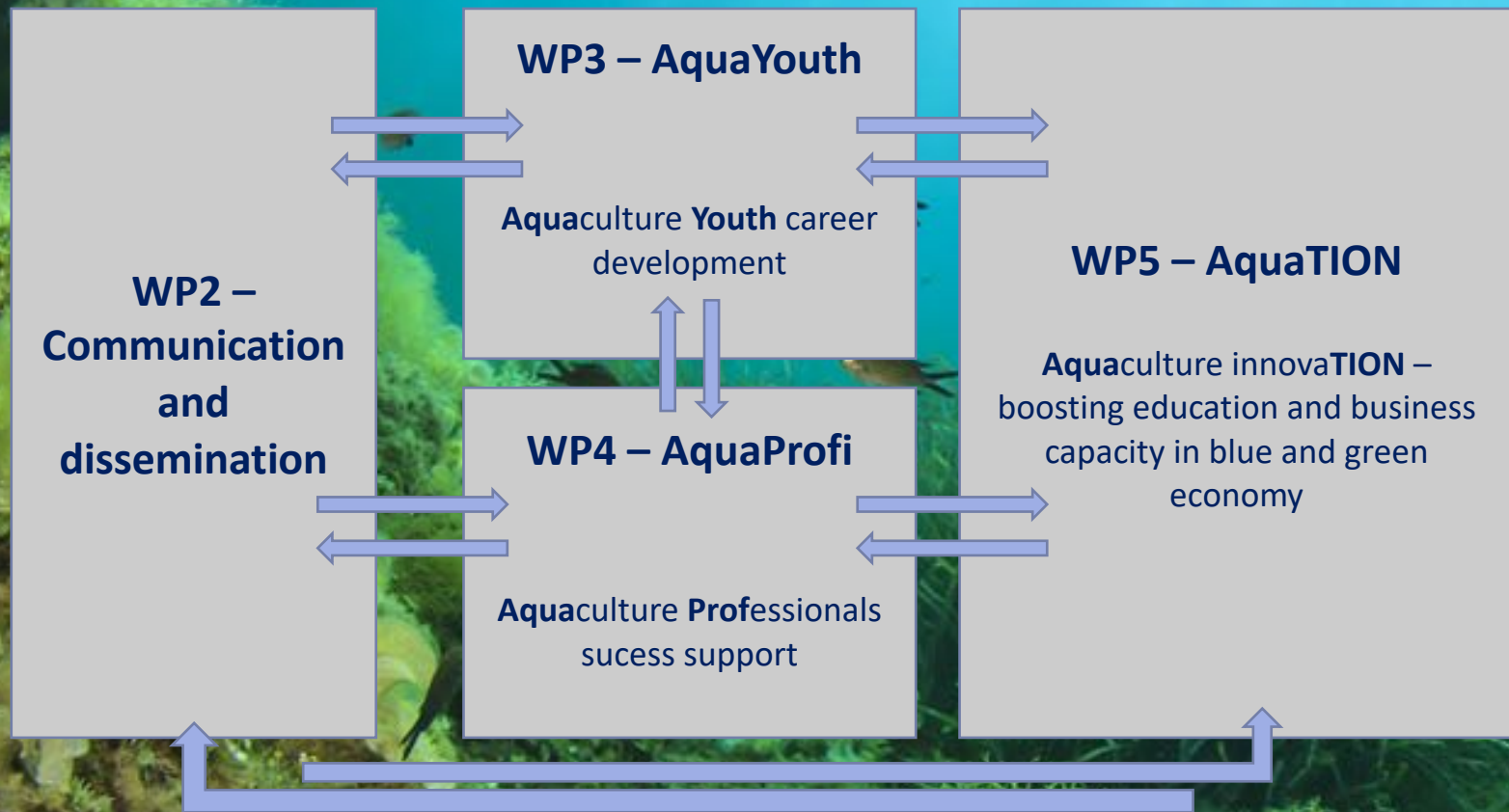


InnoAquaTech project partners
have agreed to continue offering
the SME service package beyond the end
of the project, coordinated under the umbrella
of the SUBMARINER Network.

Place/meeting

AquaVIP – structure

WP1 – Coordination

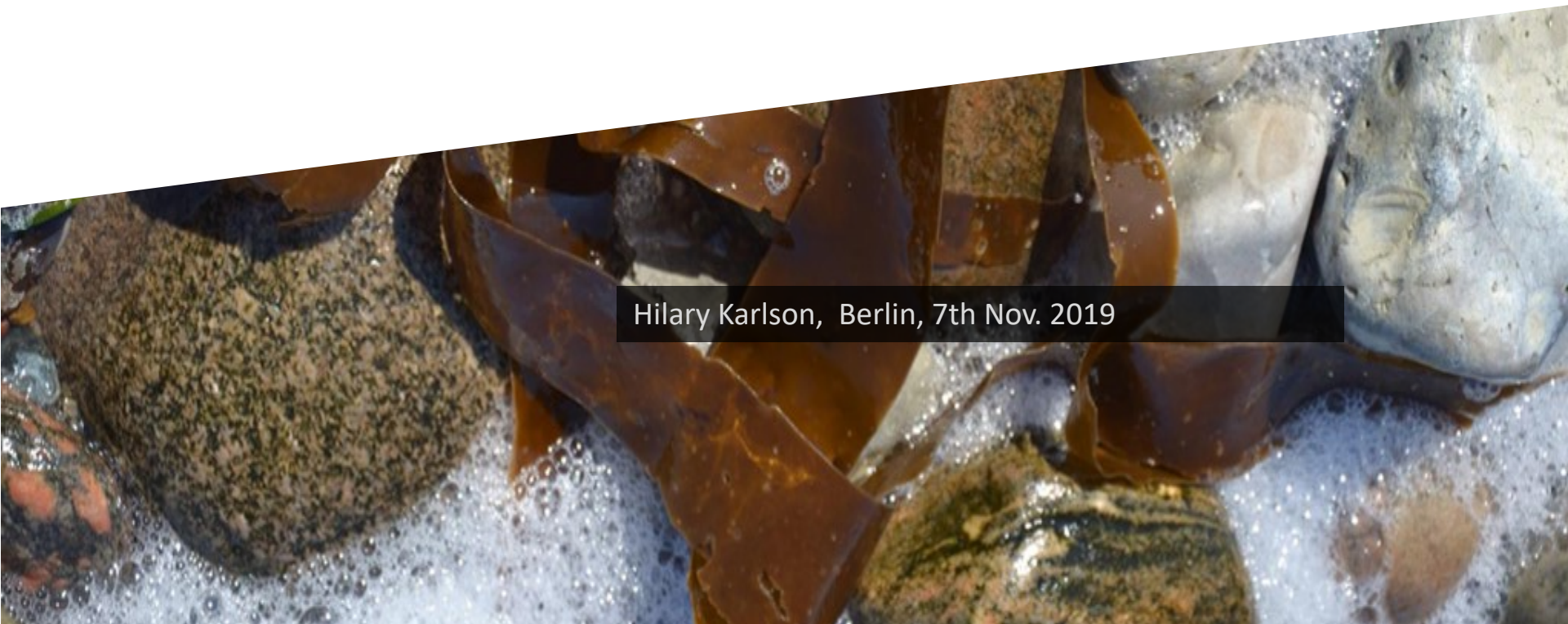




DANISH
TECHNOLOGICAL
INSTITUTE

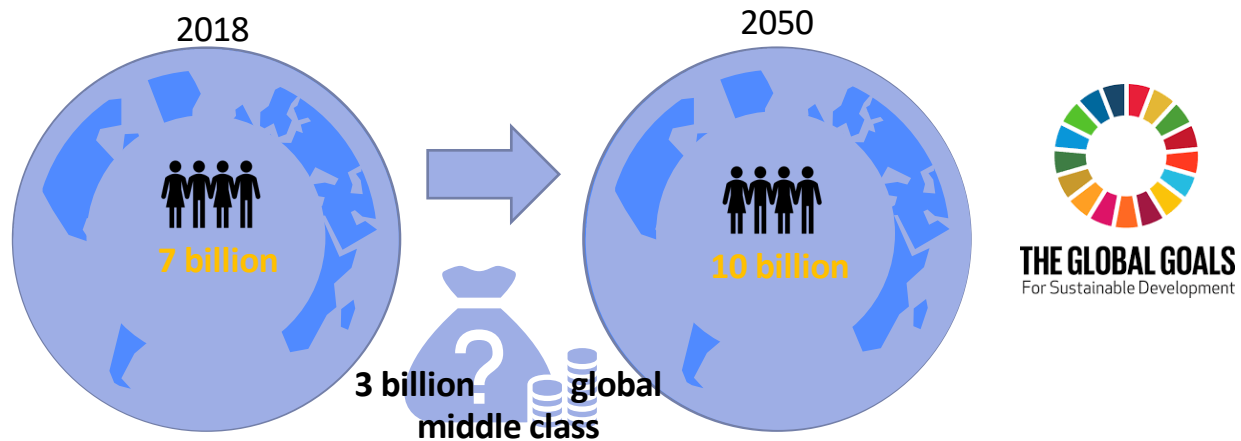
AQUACULTURE: What's in it for us?

it's all about innovation



Hilary Karlson, Berlin, 7th Nov. 2019

The Global challenge...



= increased demand for protein – food and feed

Lessons learned: InnoAquaTech

Solutions

- Producing more fish in RAS (closed) farms in the BSR
- Developing training materials and facilities (AquaVIP) for skills and de-mystification of the technologies and biology involved
- Developing information for consumers and making demonstration farming productions of different fish types for “proof of concept”, sensory tests and product development for the European market
- Promotion and good practices (already existing) of the rare species
- Developing new feed formulae where part of the ingredients replace or supplement less sustainable elements (e.g. insect, microalgal, grass proteins instead of soya from far field*) – (Biocycle AquaFeed and RASFeed content) – RAS uses less medicine. Information to the civil servants and politicians, communication, campaigns and lobbying.

Challenges

- Environmental /emission control challenges for sea-cage and model farm (open pond) fish farming
- Some HoReCa brands need certification (eg. ASC)
- General lack of training possibilities and comprehension of RAS technology
- Limited available species on the market and low public acceptance of farmed fish
- Profile of the feed used for fish farming, medication and fish welfare
- Various regulative barriers: slam (fish) vs. slurry (animal husbandry) – definition of organics (i.e. that fish are happier in schools – but that the number of fish in a school exceeds the limits for “animals” in a certain area, etc.
- Suggested solution 5)

Guldborgsund Municipality – demonstration for local partnerships for healthy food production



With this partnership we wish to create sustainable growth by investigating the symbioses between agriculture and aquaculture as a growth driver.

We will gather stakeholders by developing local solutions that: contribute to local healthy ecosystems, mitigate global climate change, create jobs and identify sectorial growth potential



The SUBNet Aquaculture WG



InnoAquaTech

- Potential actions agenda
 - SME service offer (IAT legacy)
 - Building capacities among practitioners & investors e.g. study visits, AquaVIP project activities
 - Raising awareness among consumers, e.g. cookbook
 - Facilitating match-making & building (transnational) value chains, e.g. project development
- Governance:
 - Own bottom-up agenda, meetings, minutes
 - Led by experts SUBM members
 - Open to all SUBM members; WG members also non SUBMARINERs
 - Coordinated by SUBMARINER secretariat (admin, not content)
 - Thematic activities, e.g. study visits, financed by participants/members; full SUBM members free admission to events

Another aquaculture network???

- *What other actions the WG should foster that are in demand? Not covered by other networks, e.g. ICES?*
- *Who wants to become member & steer developments in the NEW SUBNet WG?*
- *Who is interested to participate? Quick raise hand!*
- *Who wants to contribute? Raise both hands!*