

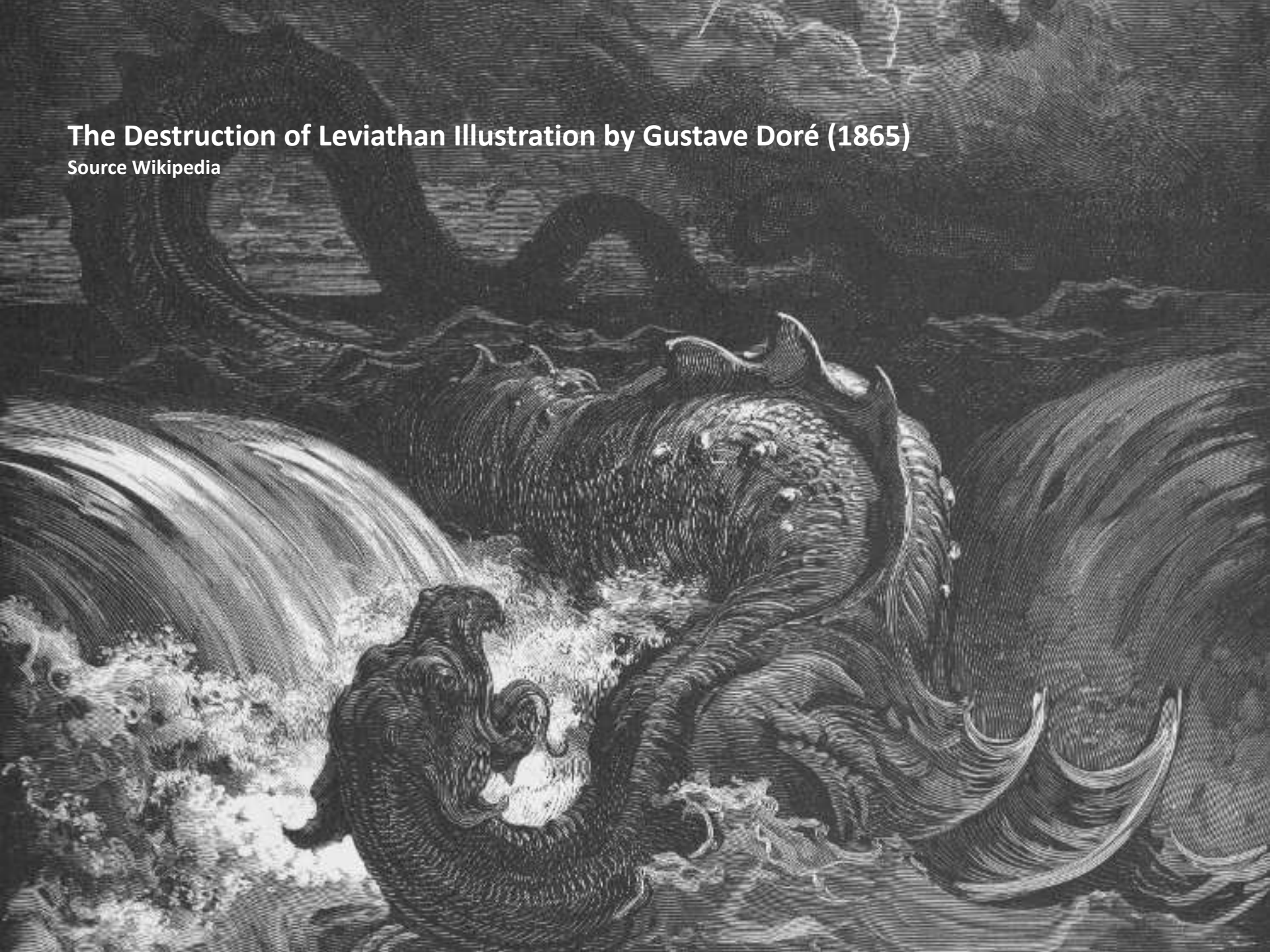
People Love the Sea

BalticRIM Webinar “Added values
of our Oceans, Seas and Baltic Sea
Maritime Cultural Heritage for the
Society and Maritime Spatial
Planning”

Matthias Maluck, State Archaeology
Department of Schleswig-Holstein

The Destruction of Leviathan Illustration by Gustave Doré (1865)

Source Wikipedia



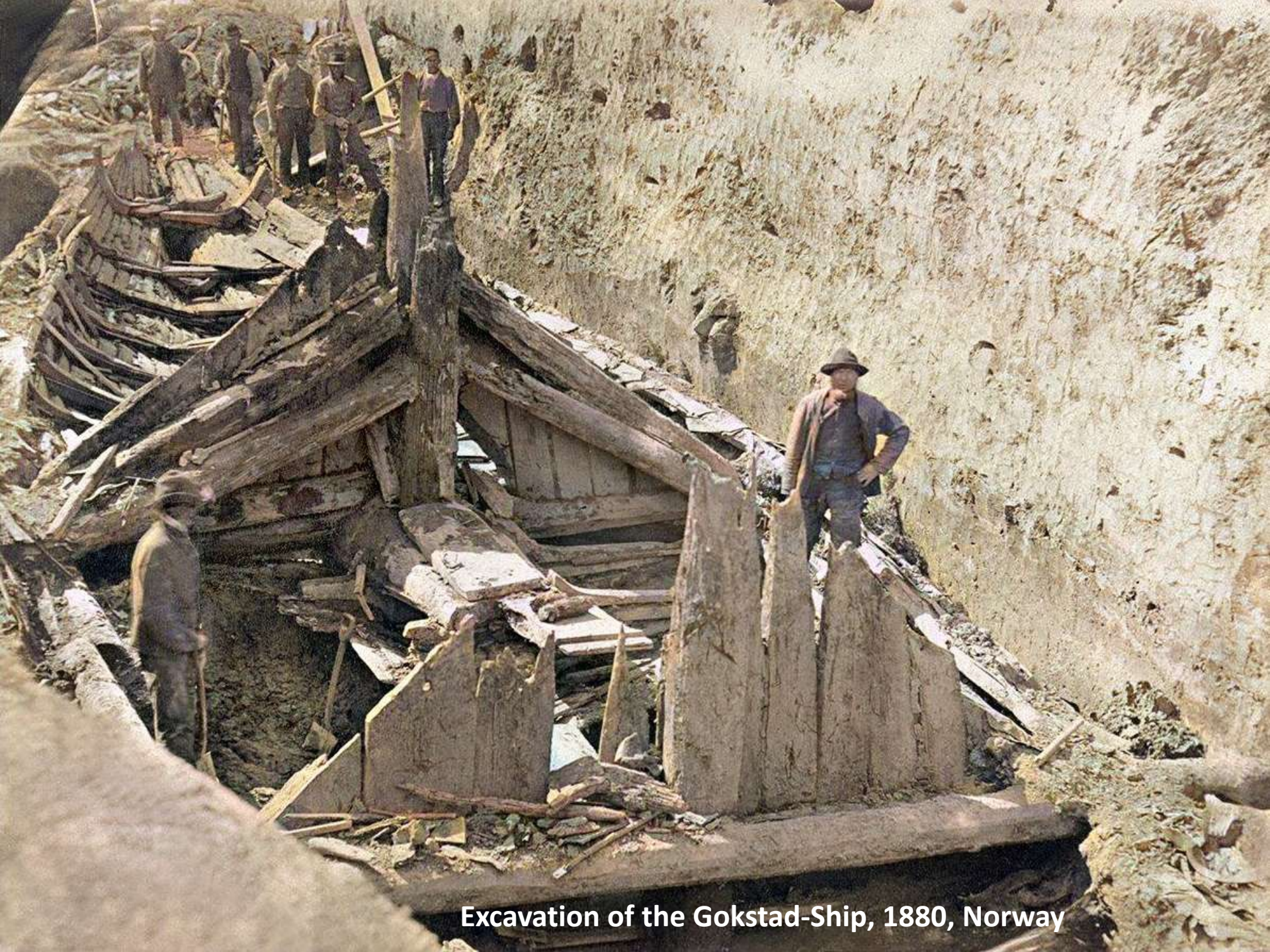


The Mary Celeste by an unknown artist (1861) Source Wikipedia

Claude-Joseph Vernet, *The Shipwreck*, 1772



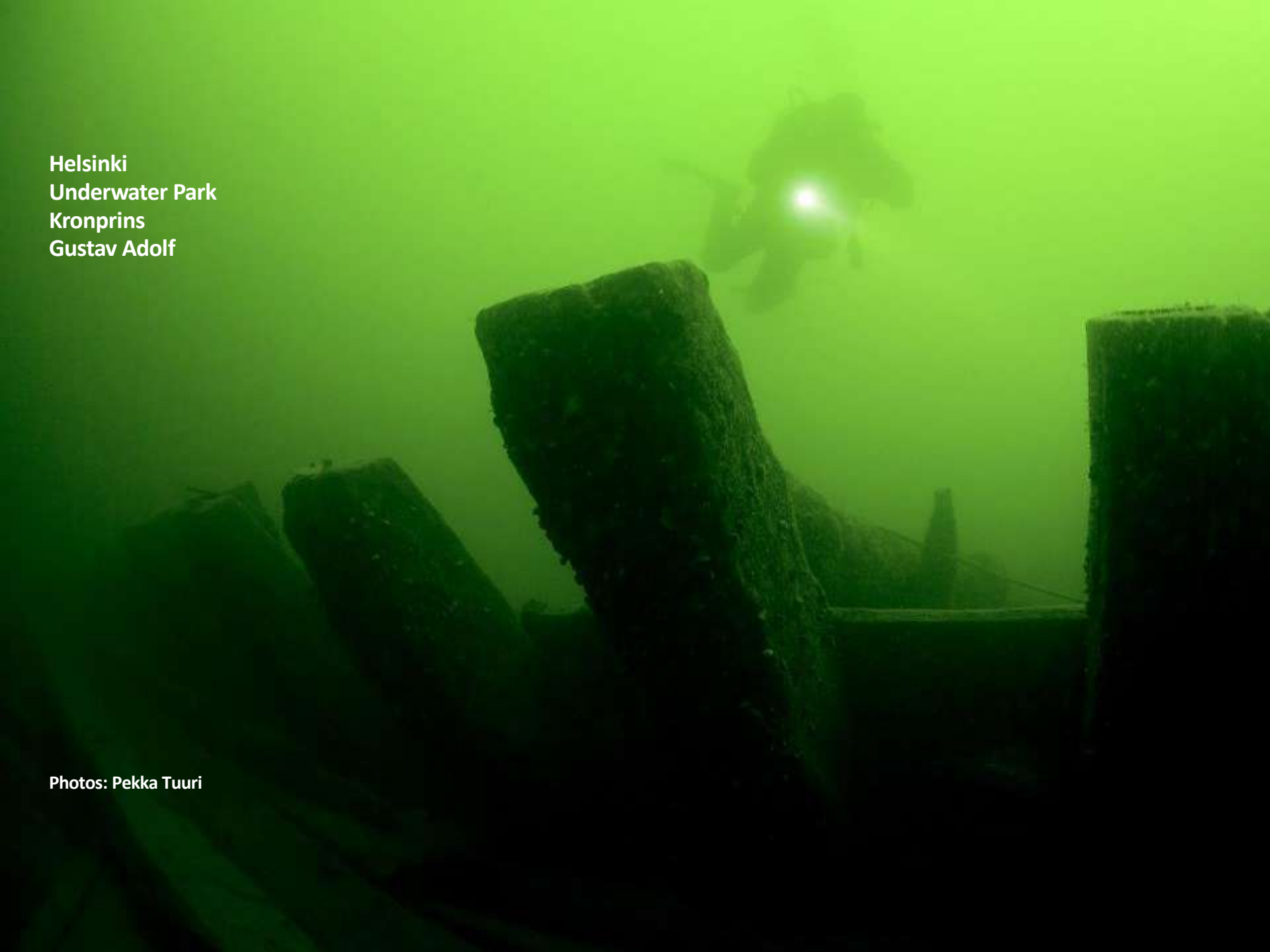




Excavation of the Gokstad-Ship, 1880, Norway

Helsinki
Underwater Park
Kronprins
Gustav Adolf

Photos: Pekka Tuuri





Old Galley Dockyard, Suomenlinna.

Photo by Finnish Heritage Agency, Hannu Matikka

Steamtug Nalle from 1923

Photo: Hans-Lennart Ohlsson, The Swedish National Maritime and Transport Museums



Rum-Regatta 2016, Flensburg, Schleswig-Holstein Photo by Daniel Zwick



**Diver on the wreck “Bryza” (small navy vessel)
close to Hel fishing village, Poland. Photo by Robert
Domżał.**





Sea Resort Jūrmala, Latvia, 1930s. c Jūrmala City Museum.



**Beach crowded by people, Kąty Rybackie,
Poland.** Photo by Robert Domżał.

Fishing storages in Bergen.

Photo by Robert Domzal





Oscar Bjørck: Launching the Boat. Skagen
(1884)

Fishermen on the Schlei, Schleswig-Holstein, 1930s







Public domain from pxhere.com



Large container vessels in Gdańsk harbour.

Photo by Robert Domżał





Gdansk Shipyard. Photo Hannu Matikka



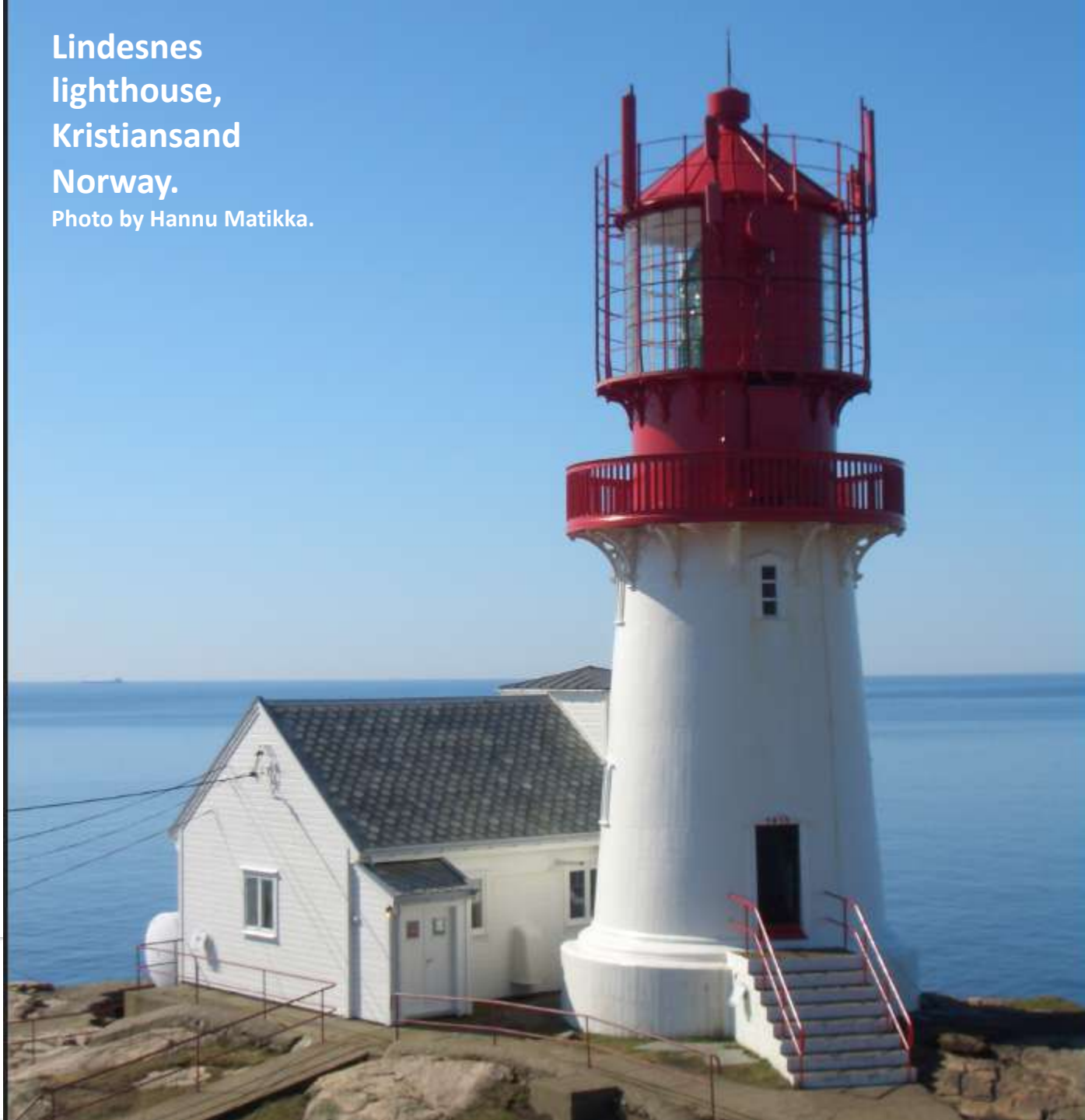
The platform “Troll” situated west of Bergen about 67 km offshore. Photo by Helge Hansen/Statoil.



Wind farms at sea close to Oresund bridge, Sweden. Photo by J.R. Jore.

**Lindesnes
lighthouse,
Kristiansand
Norway.**

Photo by Hannu Matikka.





SH



Archäologisches
Landesamt
Schleswig-Holstein



EUROPEAN UNION

EUROPEAN
REGIONAL
DEVELOPMENT
FUND

BalticRIM