

# Overview of results of the BalticRIM project and memorandum on cooperation with MSP processes HELCOM-VASAB WG meeting, 12 Nov 2020

Magda Matczak and Susanne Altvater on behalf of BalticRIM partners



# Maritime Cultural Heritage & BSR MSP – BalticRIM approach

MCH is a cultural heritage that is formed by material and immaterial remains of seafaring and the use(s) of sea located on dry land and under water. Therefore the underwater heritage should be seen as a part of a larger maritime cultural heritage.



“100-list” of the Rutilus project (2006)



The MSP approach to MCH varies among the BSR countries. Some MCH sites are marked as points and other as areas, depending on different legal protection status and reliable data accessibility

Narrowed concept of MCH still dominates among MSP planners and sectoral officers: underwater cultural heritage is limited mainly to wrecks, many other cultural heritage assets are neglected

Lack of general MCH knowledge among MSP planners and other sectors

## Some challenges

Insufficient implementation of international law that provides bases for protection of MCH – also related to the EEZ

Missing designation of an authority responsible for MCH in the EEZs in some BSR countries

Lack of effective guidelines and structures for safeguarding cultural heritage: primarily for objects on land



## Awareness of the threats to MCH

MCH is constituted by both tangible and intangible elements i.e. visible elements located at sea or land (e.g. maritime cultural landscapes, single architectural monuments etc.) and emotions and values raised by them

## Monitoring methods on the impacts to MCH

MSP planners should be aware of the diversity and versatility of MCH. MSP should take into considerations not only wrecks but also key seascapes and historic sites such as large sea battlefields, ship cemeteries, natural harbors, maritime recycling areas, wreck parks, historic sea routes, prehistoric underwater settlement areas and ensure /provide site-specific conditions for safeguarding them

# Aspects a planner should consider....

Lack of MCH knowledge is directly linked to insufficient preservation and sustainable use of the MCH in the BSR

MSP should help to detect areas with high probability of areal MCH appearance cross border, and to exchange good practices

Considering land sea interactions is vital for proper inclusion of MCH under MSP. In particular the influence of MSP plans on the MCH terrestrial objects should become a MSP planning routine

MCH should be considered as very relevant sector

# BalticRIM Solutions:

- Data Portal
  - WIKI
  - Underwater Landscape Concept
  - Planning case studies
  - Demonstration case studies on how to integrate Blue Economy
- Final Report with recommendations for planners, MCH experts and stakeholders of the Blue Economy
- Will be published mid of December

See: <https://www.submariner-network.eu/balticrim>

# The BalticRIM Data Portal



EUROPEAN  
REGIONAL  
DEVELOPMENT  
FUND

A platform for displaying and testing the new BalticRIM data and concepts

**BalticRIM Data Portal**

**CASE STUDIES**

- DANISH CASE
- DANISH-GERMAN CASE
- FLensburg FJORD
- ESTONIAN-FINNISH CASE
- GULF OF FINLAND
- FINNISH CASE
- GERMAN CASE
- LITHUANIAN CASE
- POLISH CASE
- RUSSIAN CASE
- RUSSIAN-FINNISH CASE
- VIRLANDI
- RUSSIAN CASE
- SUB BASINS

**PANBALTIC**

**BalticRIM Data Portal**

**CASE STUDIES**

**GENERAL DATA**

**BLUE GROWTH**

- MCH AND UCH TOURISTIC SITES
- MCH AND UCH TOURISTIC ROUTES

**TRANSBOUNDARY LEGACIES**

- ☐ Historic Routes-Cities
- ☐ Historic Routes
- ☐ Viking Settlements
- ☐ Amber Routes
- ☐ Pilgrimage
- ☒ Rutvik Sites 2006
- ☐ Rutvik Sites 2020

**PLANNING CONCEPTS**

- ATTRACTIVE LIVING ENVIRONMENTS
- UNDERWATER CULTURAL LANDSCAPES
- PRIORITY USE AREAS
- CULTURALLY SIGNIFICANT AREAS
- MULTI USE

**NATIONAL DATA**

**IMPACTS**

Rutvik Sites 2006	
Case Name	Transboundary Legacies
Site Name	null
Partners	null
Metadata (XML)	Http://84.231.116.84:8080/geoserver/TransboundaryLegacies/workspaces/WFBase/ows?service=WFS&version=1.0.0&request=GetFeature&output=GeoJSON
Description	null
Legend	

**CLOSE**

- Case studies: A closed working environment
- Pan-Baltic: An open part for public display

<https://balticrimdataportal.eu/>



EUROPEAN  
REGIONAL  
DEVELOPMENT  
FUND



EUROPEAN  
REGIONAL  
DEVELOPMENT  
FUND

# The BalticRIM WIKI

- Summary of selected maritime and underwater cultural heritage *site categories, terms and definitions* in one location.
- Is based on an agreement on common MCH and UCH terms and their consistent use in the project.
- Develops cultural heritage terminology and definitions for less known site categories such as ship trap.



# Planning cases in FI, FI/EE, RUS/FI, LT, DE, DE/DK, PL, DK

**Denmark** - The Øresund and the Bay of Køge are characterised by inundated prehistoric sites; one of the most frequented waterways: **How to foster sustainable land-sea interaction?**



**Germany** - 8th-century remains of a sea-barrier in the Schlei, which formed part of the Danevirke's defensive structure: **How to link it with nature protection and tourism in planning and Blue Growth?**

**Finland** - A graveyard of shipwrecks off Finland's coastal city of Kotka from the Battle of Svensksund (1790): **How to do a real zoning approach for MSP and find new ways for Blue Growth?**



**Estonia:** Identification of MCH risk profiles

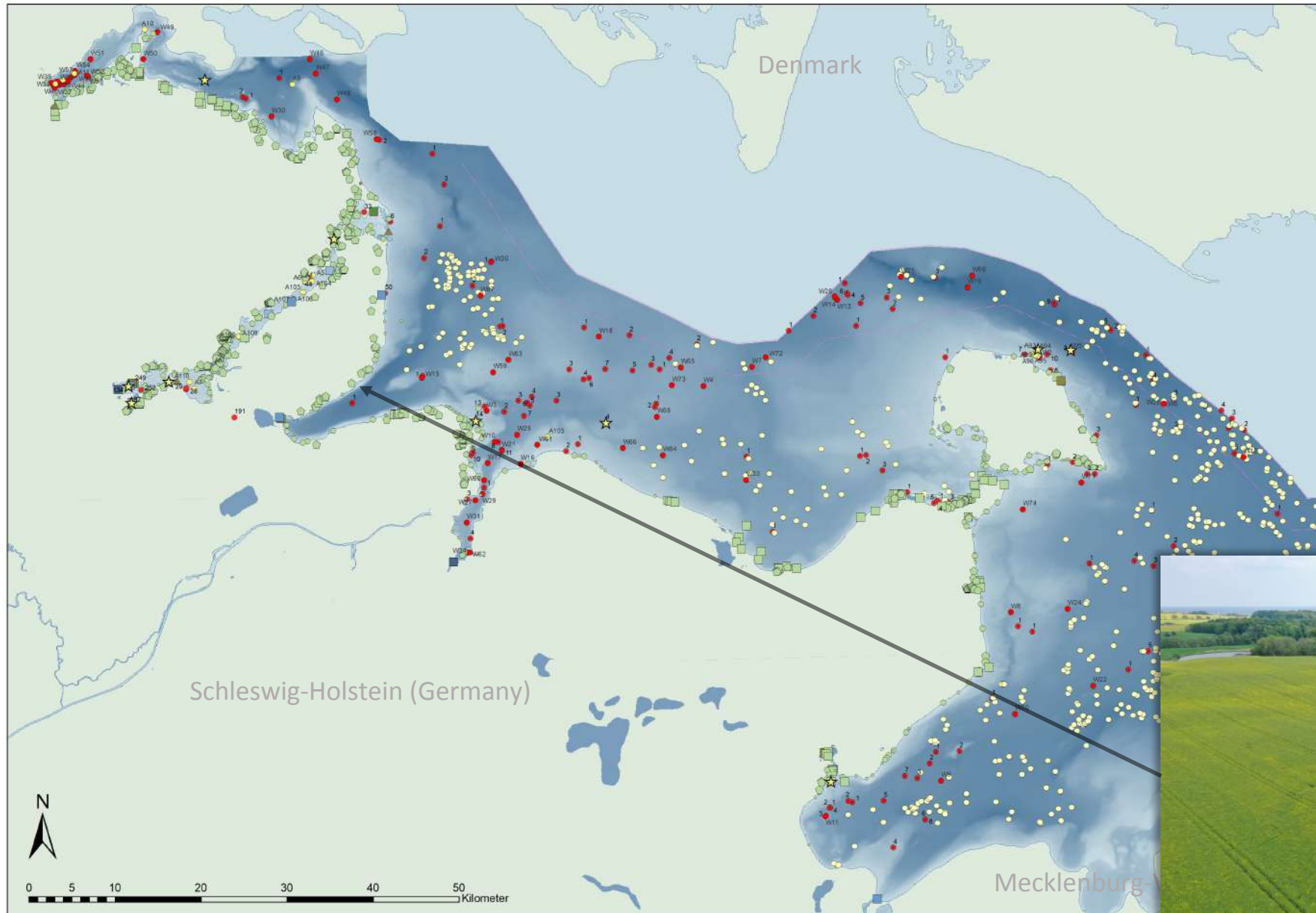


**Lithuania** - The drowned relic forest from Yoldia-Ancylus : **How to integrate Underwater Landscapes into MSP?**



## Example: Germany

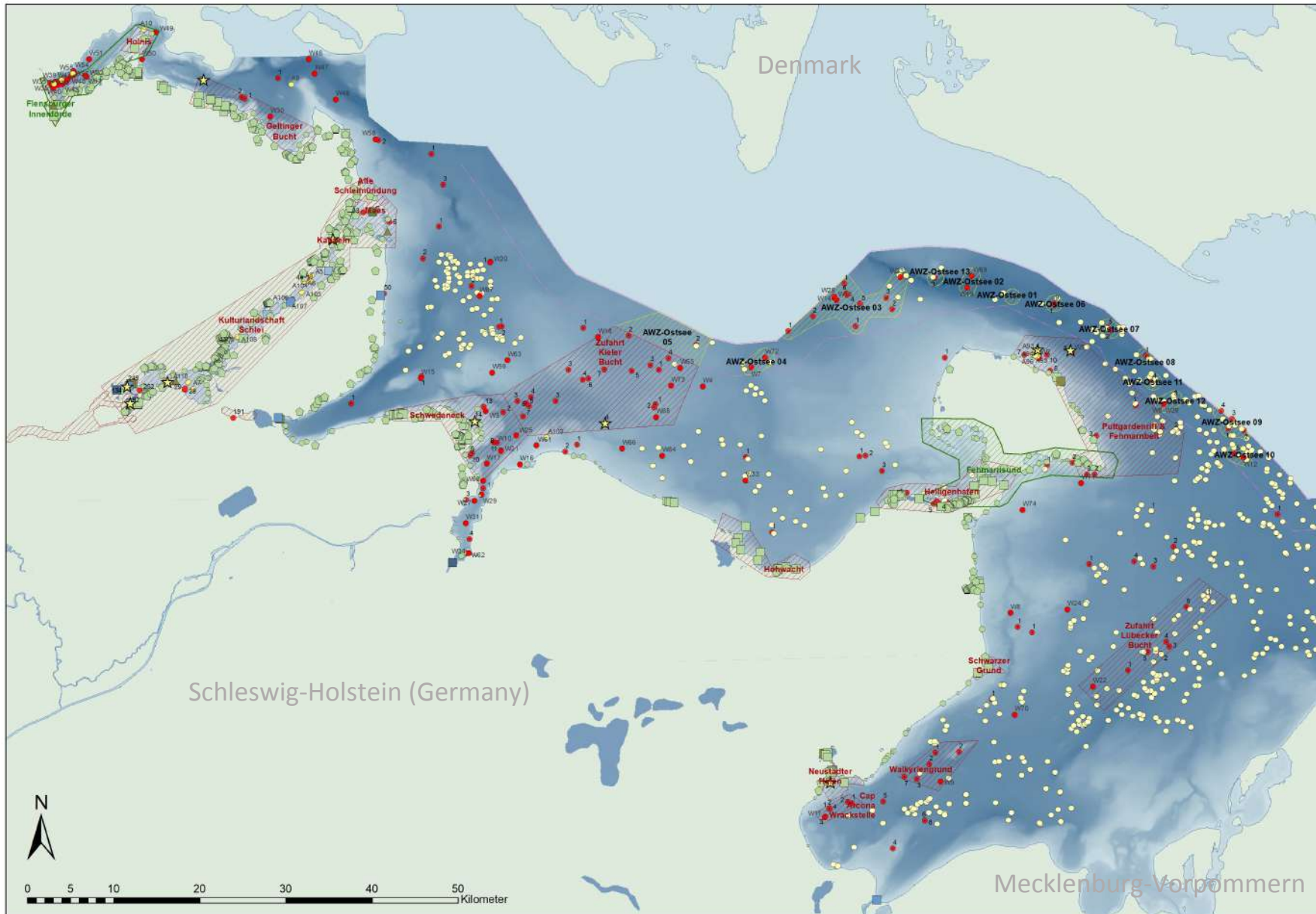
Identifying coastal sites relevant to land-sea interaction cases



Example: Karlsminde Neolithic long barrows in proximity to the coastline (as transitional zone between the living and dead?)

## Example Germany

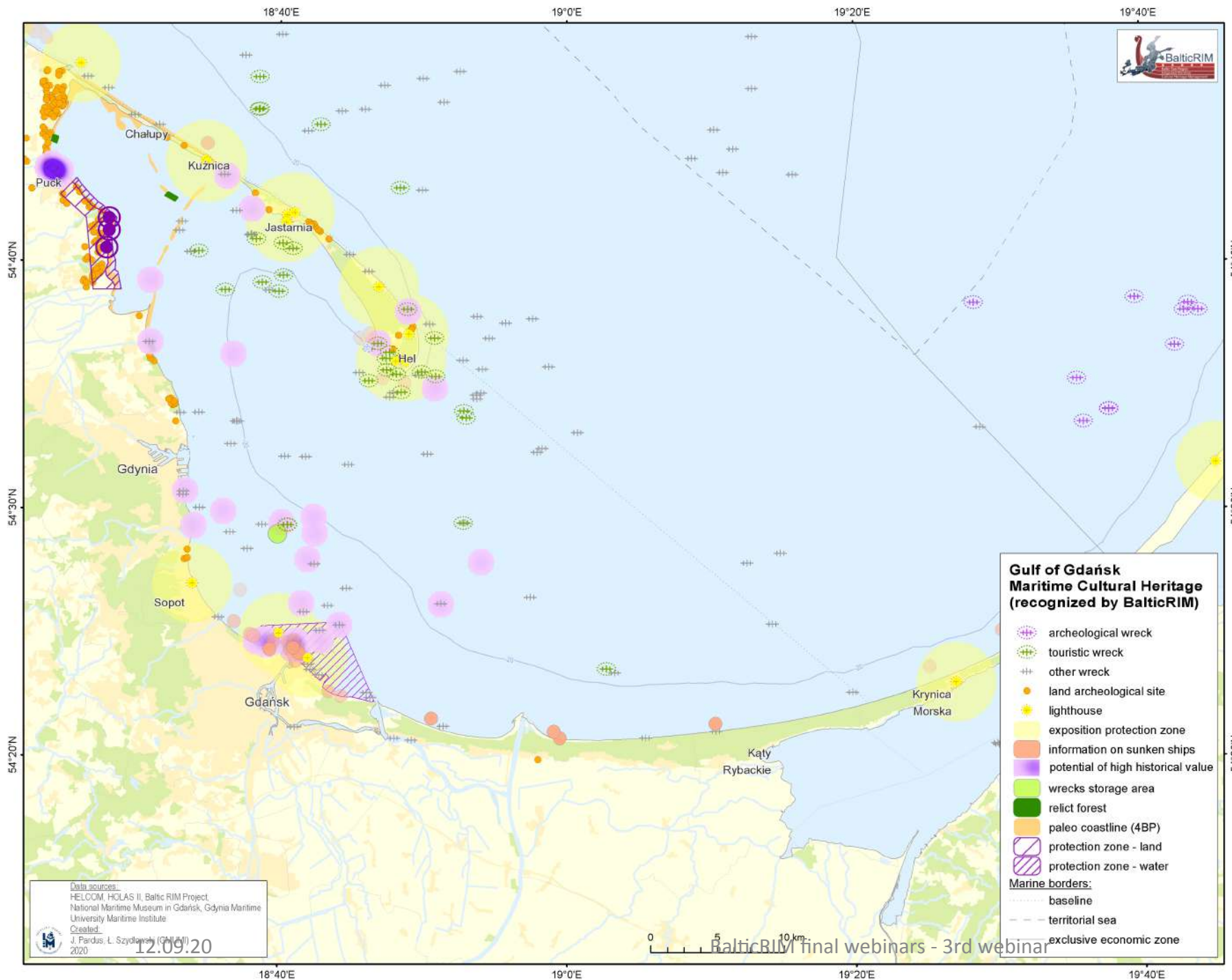
### BalticRIM priority areas



#### Criteria:

- **quantitative:** clustering of sites
- **qualitative:** areas with a high potential in terms of heritage remains and/or preservation conditions, e.g. ship-traps (reefs, navigational bottlenecks), shallow coastal waters with inundated prehistoric settlement sites and UNESCO world heritage sites
- **cross-sectoral:** including LDSH-recommendations on built and technical coastal heritage





## Example Poland

### 1. MCH Mapping

Area: Gulf of Gdańsk

Type: Maritime Cultural Heritage  
(as recognized by BalticRIM)

The map shows the overall historical and cultural potential of the Gulf of Gdańsk based on the maritime cultural assets.

The main potentials are:

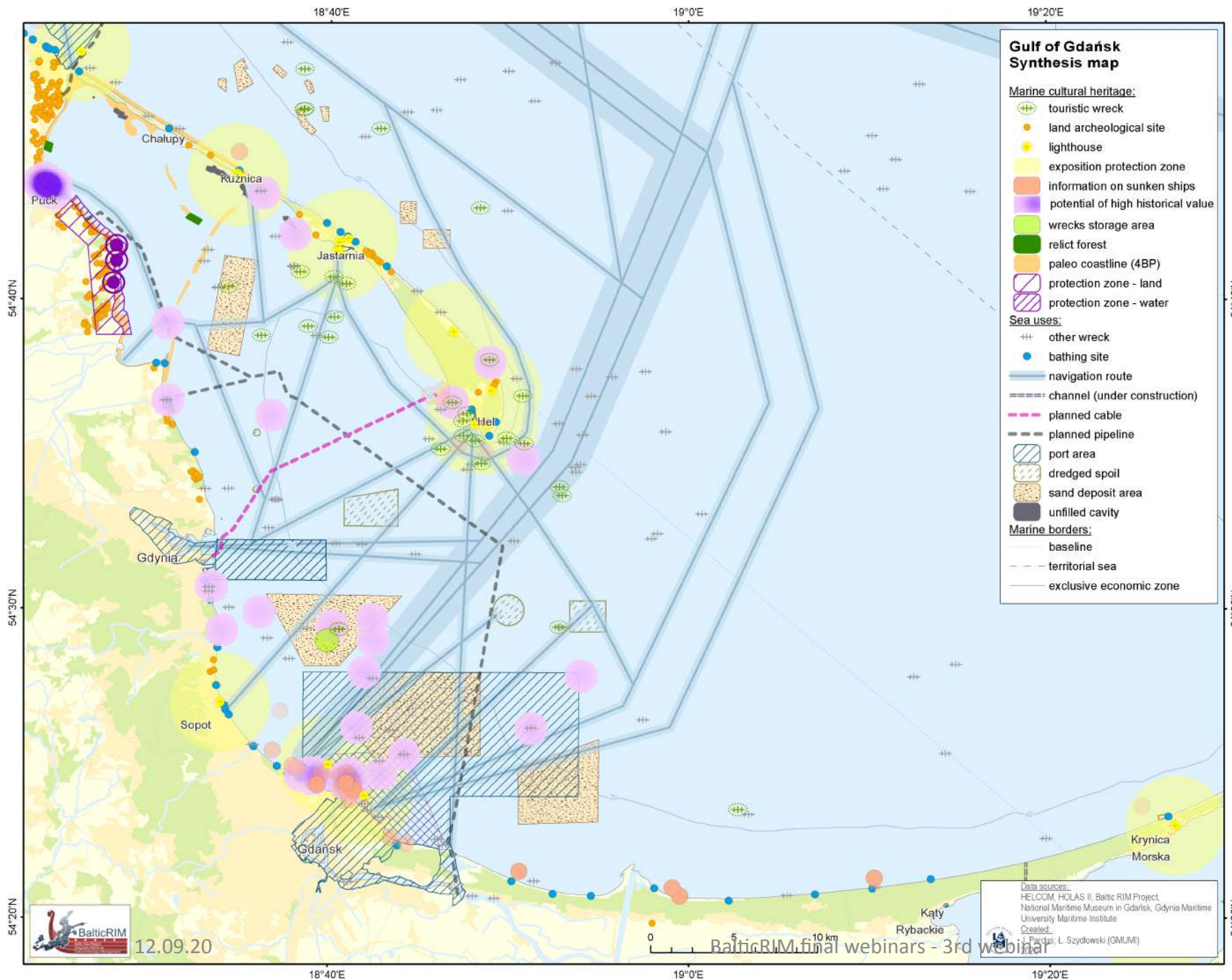
Cultural landscapes:

- Paleolandscape of the Puck Bay;
- wrecks for diving;
- visual aspects of the Gulf of Gdańsk lighthouses together with coastal anthropogenic waterfronts (fishery villages, cities).

Wrecks and hydrotechnical structures:

- The area of the Port of Gdańsk, reach in recognized objects as well as the historical information on sunken ships.
- The area of port of Puck, with the medieval port's remains.





## Example Poland

### 2. Synthesis map

Synthesis map of the BalticRIM recognized MCH values and the threatening sea uses

#### Main conflicts recognized:

PORT OF GDAŃSK AREA:

- Port offshore expansion;
- dredging;
- sand extraction.

PORT OF PUCK AREA:

- port's investments;
- dredging;
- touristic infrastructure development.

PUCK BAY PALEOLANDSCAPE:

- linear Infrastructure construction;
- touristic Infrastructure construction;
- dredging;
- sand exploitation.

WRECK DIVING AREAS:

- fishery;
- shipping;
- offshore investments.

VISUAL ASPECTS:

- ports offshore expansion;
- offshore constructions.

## Example Poland

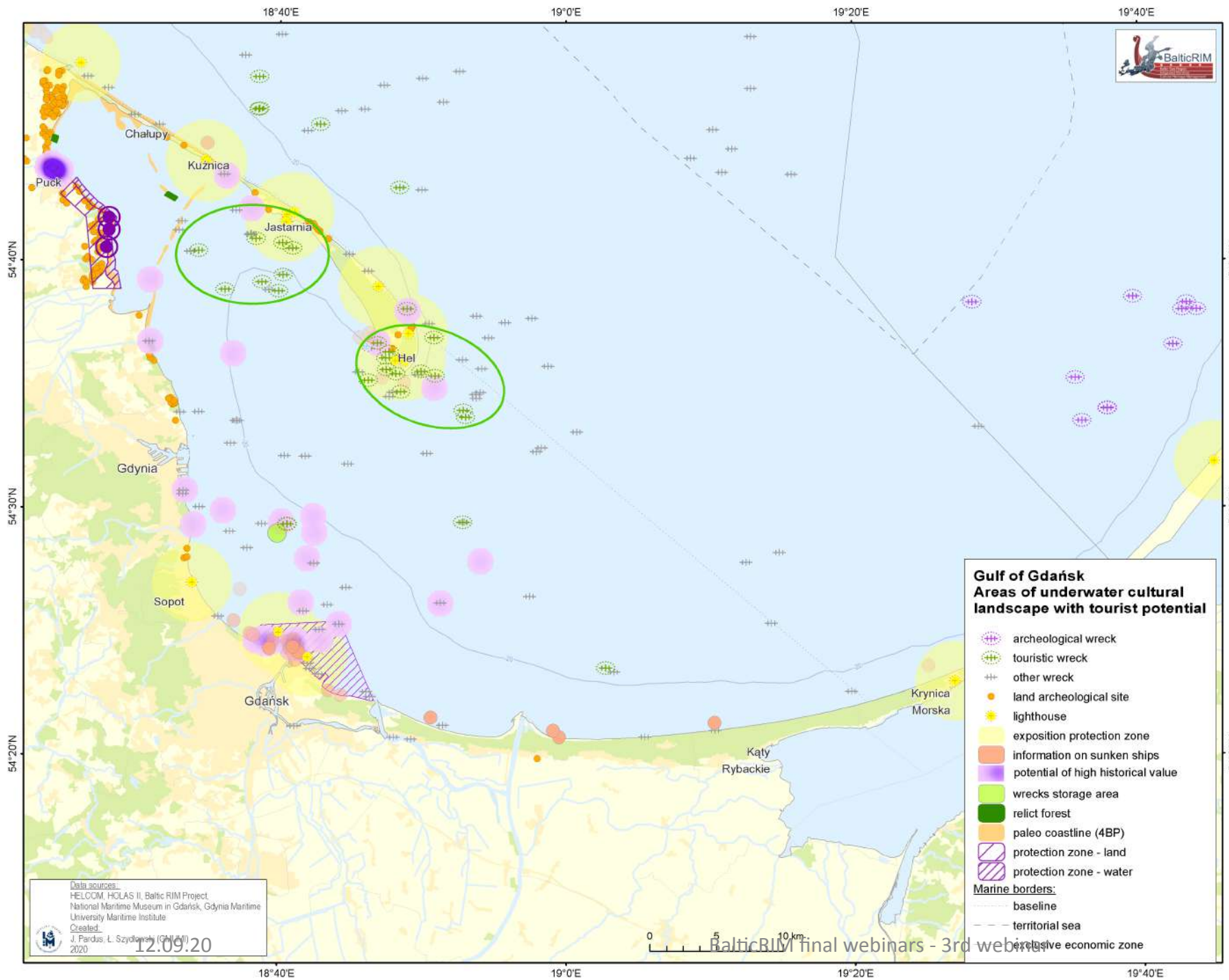
### 3. Planning suggestions

#### THE WRECS' DIVING AREA:

- given the broad definition of the term 'maritime cultural heritage' used in the BalticRIM project, these facilities create a kind of underwater cultural landscape with tourist potential that should be protected from being limited by other human activities.

#### Planning suggestions:

- the tourist function in the areas of wreckage made available for diving should be secured - designation of subareas devoted to diving;
- limitations to other human activities like fishery and shipping should be in place.





# Recommendations (selection):



## ✧ MCH authorities' contributions toward MSP:

- Cultural heritage authorities should compile a “cultural heritage knowledge base” for planners;
  - providing analyses of MCH register data and other sources of MCH information, highlighting thematic reviews;
  - selecting and interpreting exemplary top sites and defining BG potential and further research areas.
- This should be obligatory in countries where there is no free access to cultural heritage registers
  - > A good practice: *“Review on Finnish maritime cultural heritage”*  
[https://www.merialuesuunnittelu.fi/wp-content/uploads/2019/04/Suomen\\_merellisen\\_kulttuuriperinn%C3%B6n\\_tilannekuva\\_2019-1.pdf](https://www.merialuesuunnittelu.fi/wp-content/uploads/2019/04/Suomen_merellisen_kulttuuriperinn%C3%B6n_tilannekuva_2019-1.pdf)
- Focus on improvement of the online information & registers that can be easily downloaded as GIS shapes

## ✧ MSP planners contributions:

- to develop processes to enhance sustainable use of MCH linking it to other suitable uses
- to assist in defining potential synergistic areas
- to help identifying potential areas of conflict (e.g. cultural interest and economic interest)
- to enhance and facilitate research on MSP in particular LSI





# Project materials – Reports, DataPortal and WIKI

- A platform for displaying and testing the new BalticRIM data  
<https://balticrimdataportal.eu/>



- Reports – material for the project process (barriers, legal implications, data registers..)

<https://www.submariner-network.eu/balticrim>

- BalticRIM WIKI for terminology  
Dokuwiki.balticrim.eu

- Status report on existing knowledge and gaps on MCH for MSP processes
- Status report on assessment of the available MCH data and proposed measures for the MSP data exchange
- Status report on methodology and obstacles during schematization of Cultural Heritage assets
- Status report on the role of MCH and legal implications for MSP in the BSR countries
- Status report on MCH priority zones (The Baltic Maritime Heritage spatial atlas)
- Status report on results of sectoral dialogues
- Status report on a common heritage impact assessment strategy for MSP regarding MCH
- MCH-MSP game
- Status reports for each pilot planning case
- Synthesis of maps & cross-sectoral plans
- Status report on socio-economic aspects, which encompasses material for MCH experts, planners and residents, focusing on the socio-economic potential
- Status report on management cases outlining the experiences and results of the cross-sectoral and cross-boundary cooperation
- Memorandum/protocol on arrangements and communication with the MSP groups
- Memorandum/protocol on arrangements and communication with other MSP and MCH projects
- **Final report with lessons learned of planning and management strategies related to MCH and MSP + a handbook for the daily practice of planners, sectors and other interested parties**



# MEMORANDUM on Cooperation

The BalticRIM Project Partners would like to adopt the MEMORANDUM on Cooperation on MCH with VASAB-HELCOM WG on MSP in consideration of the benefit of the common good – the MARITIME CULTURAL HERITAGE of the Region.

## PREAMBLE:

- **Having regard to the respective mandate of the HELCOM-VASAB Working Group on Maritime Spatial Planning;**
- Having regard to the respective mandate of the Baltic Region Heritage Committee and its Working Group on Underwater Heritage and the Working Group on Coastal Heritage;
- **Having regard to the Code of Good Practice for the Management of Underwater Cultural Heritage in the Baltic Sea Region (COPUCH, 2008);**
- Having regard to the VASAB-HELCOM Guidelines on transboundary consultations, public participation and co-operation, in particular their part on co-operation;
- **Having regard to the results of the BalticRIM project, which recognized the potential of maritime cultural heritage in the Baltic Sea, its importance for blue growth, consequences for spatial planning, identified gaps and challenges;**
- In line with the findings of the previous transnational projects covering Marine Cultural Heritage (MCH), the PartiSEApate project in particular;
- Having in mind that the EU MSP Directive (DIRECTIVE 2014/89/EU) encourages member states to include underwater cultural heritage as an important topic of their maritime spatial plans, whereas broader notion of MCH is still waiting to be included in this document;
- **Being aware that the current Roadmap on BSR MSP of the HELCOM-VASAB Working Group insufficiently covers the recognized MCH challenges;**



- Taking note of the internet services/data&information sources/ produced by the BalticRIM project, namely:
  - BalticRIM DataPortal, <https://balticrimdataportal.eu/>
  - BalticRIM WIKI for terminology, [Dokuwiki.balticrim.eu](https://dokuwiki.balticrim.eu)
  - BalticRIM homepage, <https://www.submariner-network.eu/balticrim>.
- Recognizing Maritime Cultural Heritage importance in building regional identity and its fragility and vulnerability due to a changing environment and physical destruction;
- Recognizing the role of MCH role in creating and enhancing well-being, quality of life, identity, sense of place, social capital, and Blue Growth ;
- Being aware that MCH as a source of aesthetical values for coastal societies, needs preservation and maintenance and simultaneously as a source of development stimuli enhancing blue growth, sustainable high quality tourism in particular , it requires intensification of exploitation;
- Recognizing growing pressures that might negatively affect MCH in the BSR in particular noting growing competition for maritime space;
- Recognizing the role of MSP in strengthening its protection and boosting synergy with other sectors;
- Being aware of the need of common BSR MSP approach to MCH and important benefits due to transnational coordination of MCH at BSR level;
- Acting in accordance with the ordinary legislative procedure

## IT HAS BEEN AGREED TO:

- Take up the maritime cultural heritage higher in the HELCOM-VASAB WG on MSP agenda as an important part of Baltic countries identity which should be strengthen by MSP;
- Consider the maritime cultural heritage as one of the points in the HELCOM-VASAB Roadmap on MSP in particular in a form of bi-annual debates on MCH initiated by the HELCOM-VASAB WG on MSP (e.g. in a framework of biannual BSR MSP Fora)
- Establish the permanent cooperation between the HELCOM-VASAB Working Group on MSP and the Baltic Region Heritage Committee and its Working Group on Underwater Heritage;
- Establish the permanent cooperation between the HELCOM-VASAB MSP national contacts points with adequate national cultural institutions;
- Maintain the BalticRIM data portal as a part of the HELCOM-VASAB WG effort on MSP data;



## IT HAS BEEN AGREED TO:

- Establish the HELCOM-VASAB expert group (contacts) on MCH;
- Utilise experience and structures of the HELCOM-VASAB WG on MSP for dissemination of the BalticRIM project results and recommendations as well as success stories of inclusion of MCH into MSP by the BSR countries and in the long run all other MSP relevant information on MCH;
- Integrate the MCH into ongoing work on the green infrastructure of the HELCOM-VASAB WG on MSP;
- Address all BSR countries with a plea of the HELCOM-VASAB Working Group on MSP to give duly attention to their MCH under the MSP process and in particular to make use of an integrated and holistic approach to that end;
- Stimulate education, information, and interactions discussing comprehensive ways to recognise MCH under MSP.



Please take the BalticRIM memorandum into consideration when discussing the Regional Baltic Maritime Spatial Planning Roadmap



## Project Partners

- State Archaeology Department of Schleswig-Holstein / ALSH (DE)
- Submariner Network for Blue Growth EEIG (DE)
- The Finnish Heritage Agency (FI)
- Metsähallitus Park & Wildlife Finland (FI)
- University of Turku (FI)
- University of Tartu (EE)
- Estonian National Heritage Board (EE)
- Public Institution of Coastal Research and Planning / CORPI (LT)
- Klaipėda University (LT)
- National Maritime Museum in Gdańsk (PL)
- Maritime Institute in Gdańsk / MIG (PL)
- Atlantic Branch of the P.P. Shirshov Institute of Oceanology / ABIORAS (RU)
- Aalborg University (DK)



EUROPEAN UNION  
EUROPEAN  
REGIONAL  
DEVELOPMENT  
FUND

# Thank you

## Contact us

### Project Manager & Legal Representative:

Matthias Maluck (State Archaeology  
Department of Schleswig-Holstein)  
Email: [Matthias.Maluck@alsh.landsh.de](mailto:Matthias.Maluck@alsh.landsh.de)  
Phone: +49 (0)4621 387-36

### Financial & Communications Manager:

Susanne Altvater (Submariner Network for  
Blue Growth EEIG)  
Email: [sal@sustainable-projects.eu](mailto:sal@sustainable-projects.eu)  
Phone: +49 (0)30 832 141 748

## Internet

<http://balticrim.eu/>

## The BalticRIM Project

Flagship-project of:



Partner of:



Integrating the maritime  
cultural heritage into  
maritime spatial planning