

Blue Platform Workshop - Helsinki 6-7. Feb. 2020

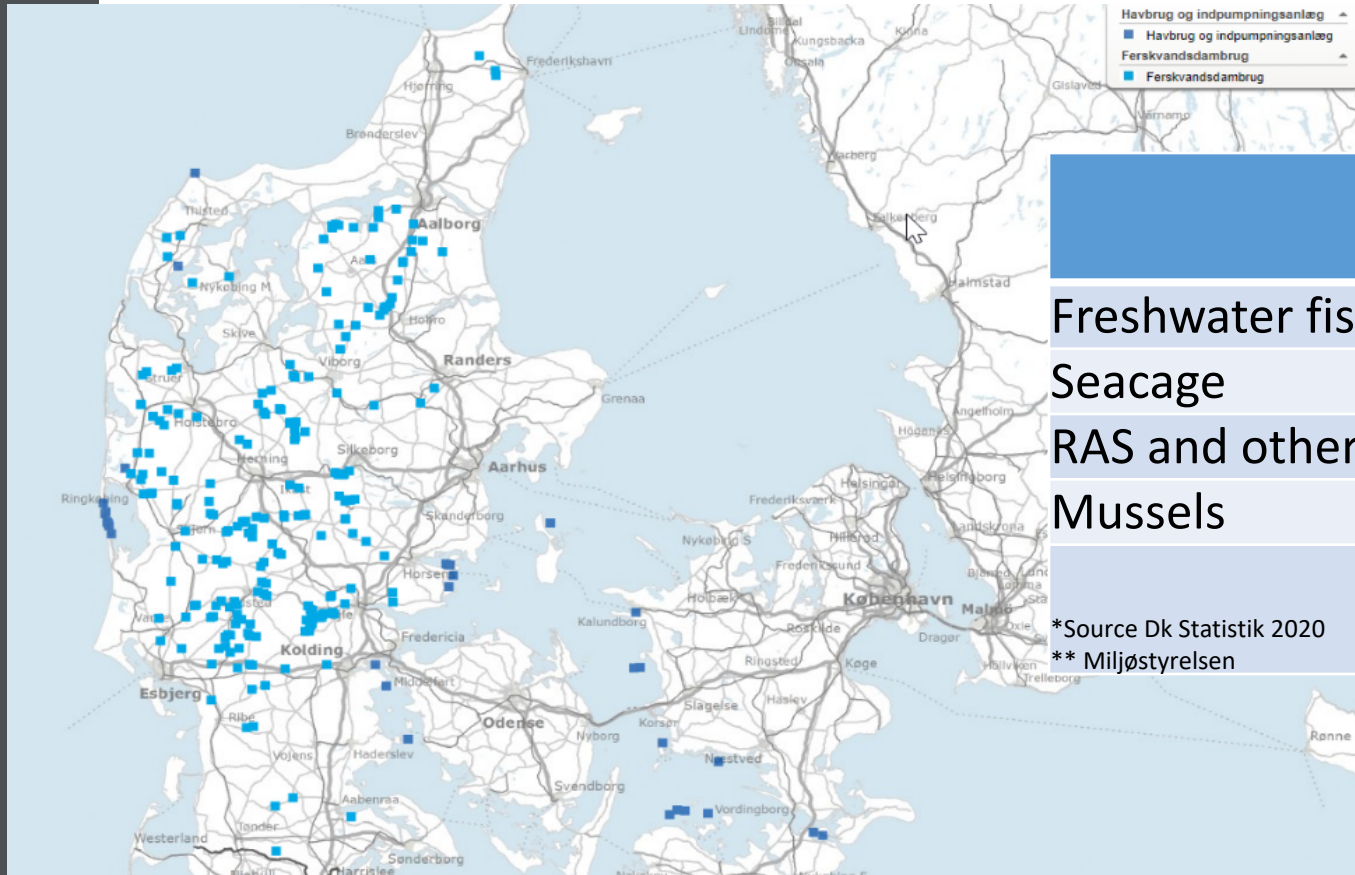
State of play - Aquaculture and its legislation in Denmark

Lisbeth Jess Plesner

Dansk Akvakultur
Danish Aquaculture Organisation

Producers, feed, export;
LF(agriculture) and FEAP (EU), HELCOM





	Farms*	Production* (t)	Total N (t)
Freshwater fish farm	156	32.800	630**
Seacage	19	14.400	349**
RAS and others	17	5.700	Around 200
Mussels	14	3.100	
	206	56.000	

*Source Dk Statistik 2020

** Miljøstyrelsen



Freshwater (trad., semi-RAS, RAS): Mainly Rainbow trout

Marin Seacage (off coast): Mainly Rainbow trout (roe) (8 -9 m)

RAS (Marine and freshwater): Rainbow trout, pike perch, eel, kingfish, turbot, salmon

Aquaculture regulation – fish aquaculture

EU: EIA, Habitat D, WFP etc.

HELCOM recommendations: N + P threshold, / BAT

No specific law on aquaculture

General environmental legal acts and specific legal orders

Authorities: Municipalities and “State”

Environmental Appeal Board.

1. Freshwater fish farming and Freshwater RAS
2. Marine RAS
3. Sea cage farming



1. Freshwater farming – Freshwater RAS

Location License: no new farm-location in many years, old farms or other industry

Environmental License: Renewed every 10 years.

- Feed quota “or”
- Outlet regulation / N and P quota (New 2012)

BAT: specific BAT–depending on the size of the production.

License to water intake: Valid up to 10 years.

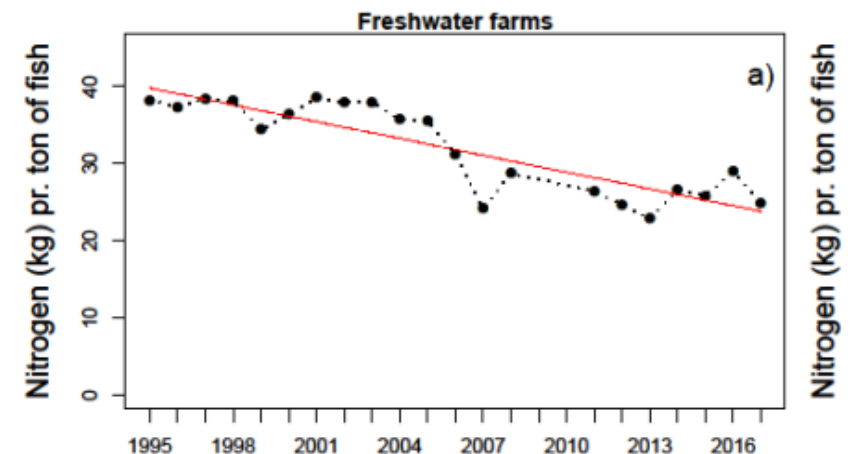
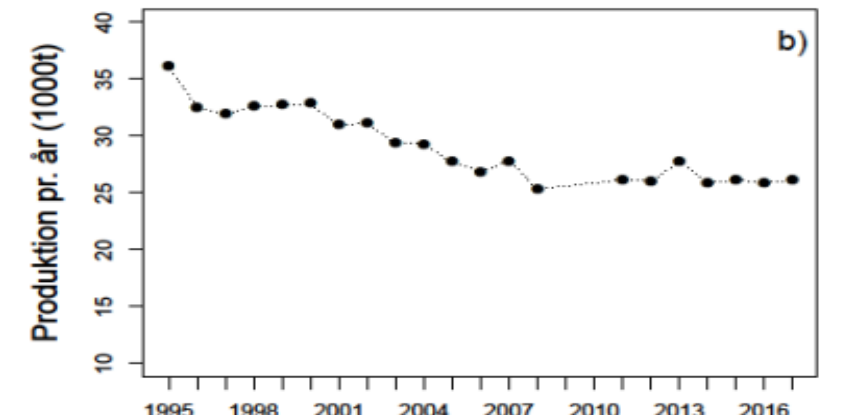
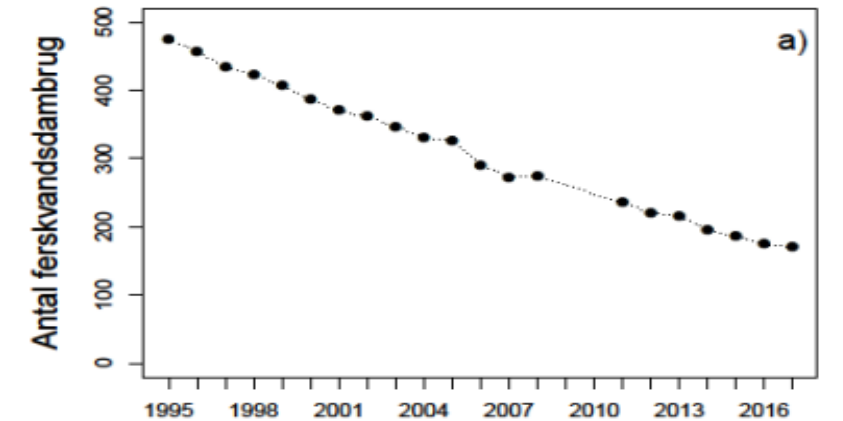
Authorities: Municipalities

2. Marine RAS

Location – Harbors

New effluent permissions (new N and P quota), No specific BAT

Wish: Aquaculture regulated “similar to” agriculture



✚ BAT requirement in the freshwater fish farm Order (no. 1567 7.12.16)

Table 1: Maximum allowed outlet for fish production under size 1 kg fish.

Productions size	Nitrogen	phosphorous	BOD
	kg/ton fish	kg/ton fish	kg/ton fish
0 - <25 tons	$42 + 5,5/25^*(25-X)$	$2,5 + 1,4/25^*(25-X)$	$55 + 24/25^*(25-X)$
25 - <55 tons	$35 + 7/30^*(55-X)$	$2,2 + 0,3/30^*(55-X)$	$39 + 16/30^*(55-X)$
55 - <230 tons	$27 + 8/175^*(230-X)$	$1,4 + 0,8/175^*(230-X)$	$28 + 11/175^*(230-X)$
≥230	27 kg/ton fish	1,4 kg/ton fish	14 kg/ton fish

Table 2: BAT requirements to produce large trout (over 1 kg fish, but not for brood stock)

Productions size	Nitrogen	phosphorous	BOD
	kg/ton fish	kg/ton fish	kg/ton fish
0 - <25 tons	44	4,2	87
25 - <55 tons	39	3,1	71
55 - <230 tons	30	2,7	37
≥230	27	1,8	19

3. Sea cage farming - rules



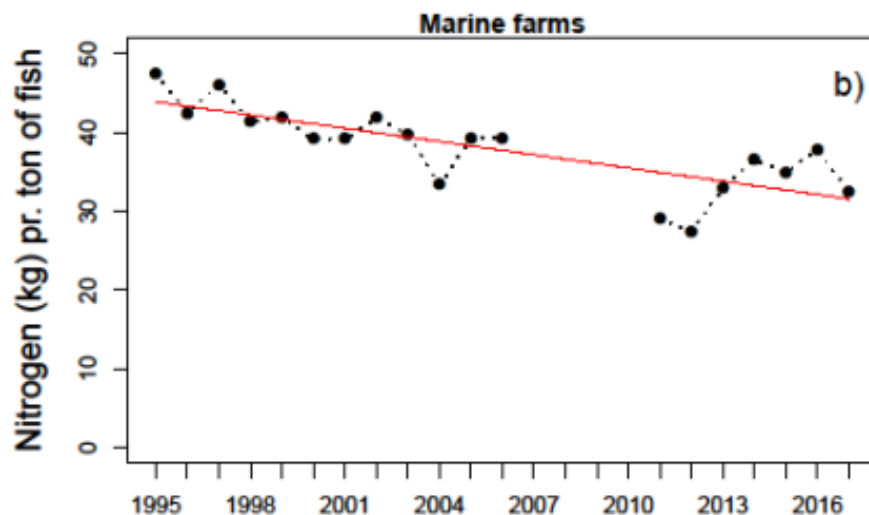
Location License: Valid up to 10 years. Older no expiration.
No new farms in many years.

Authorities: “State”

Environmental Licence: Regulation: N, P quota (feed quota)

BAT: a mandatory BAT-description
every year make a written statement for improvement.

Authorities: Municipal until 1 NM, “State” from 1 NM



2014 - Sea Cage - convert to a new environmental approval system

All 19 Sea Cage farms has Applied (2014)

Status Environment Licence (2020)

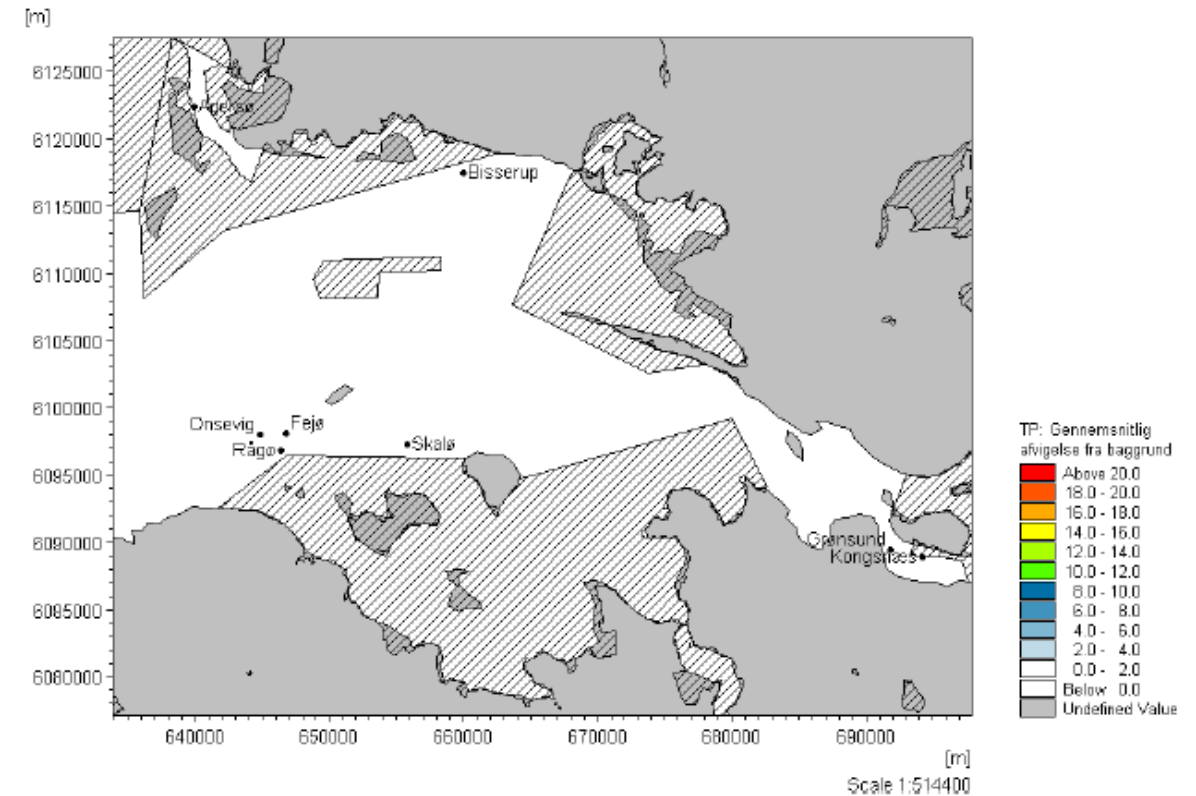
- 7: Not treated.
- 3: Permissions – not appealed
- 2: In the appeal Board
- 7: Permissions "changed" in the Appeal Board and "send back "

2018: Case send to Court – Onsevig Seacage

- *Main problems: Habitat – rules / Lack of decisions*

Location Licence

- 6: no new placement permissions / no decisions
- 13: Permissions – problems HD
- *Main problems Habitat rules / Lack of decisions*



Figur 3.8

Virkningen af PO₄-udledning fra Skala, Fejø, Råge og Onsevig havbrug på gennemsnitlig afvigelse fra baggrundskoncentrationen af TN i procent. Skraverede områder er Natura 2000 områder.

Minister of Environment (2018): Mass! (one farmer!)
Review Seacage Regulation and Administration!

Main conclusion (report 2019):

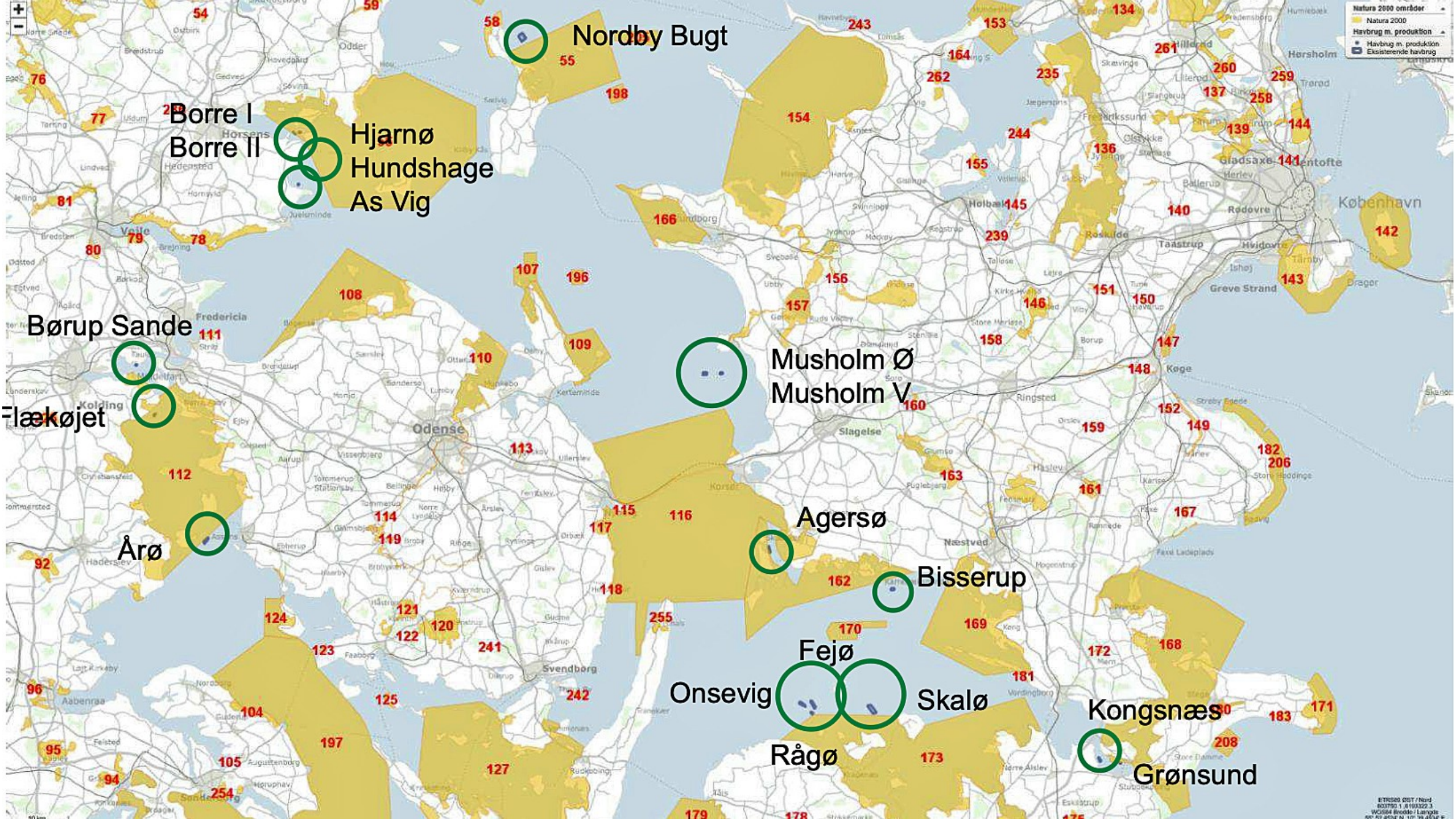
"Det konstateres, at de gældende regler overordnet udgør et solidt udgangspunkt og basis for en fremtidig sikker administration af området."

It is found that the current rules generally constitute a solid starting point and basis for a future secure administration of the area.

Main problem for Licencing – habitat-rules *(and decisions)*

No fault at the fish farmers – no use of too much feed, antibiotic-use and registration, N and P outlet etc.





Growths Strategy (EU and National)

June 2016: Growth plan for aquaculture

- 800 extra t N for net cages
- And 380 extra N to freshwater farms

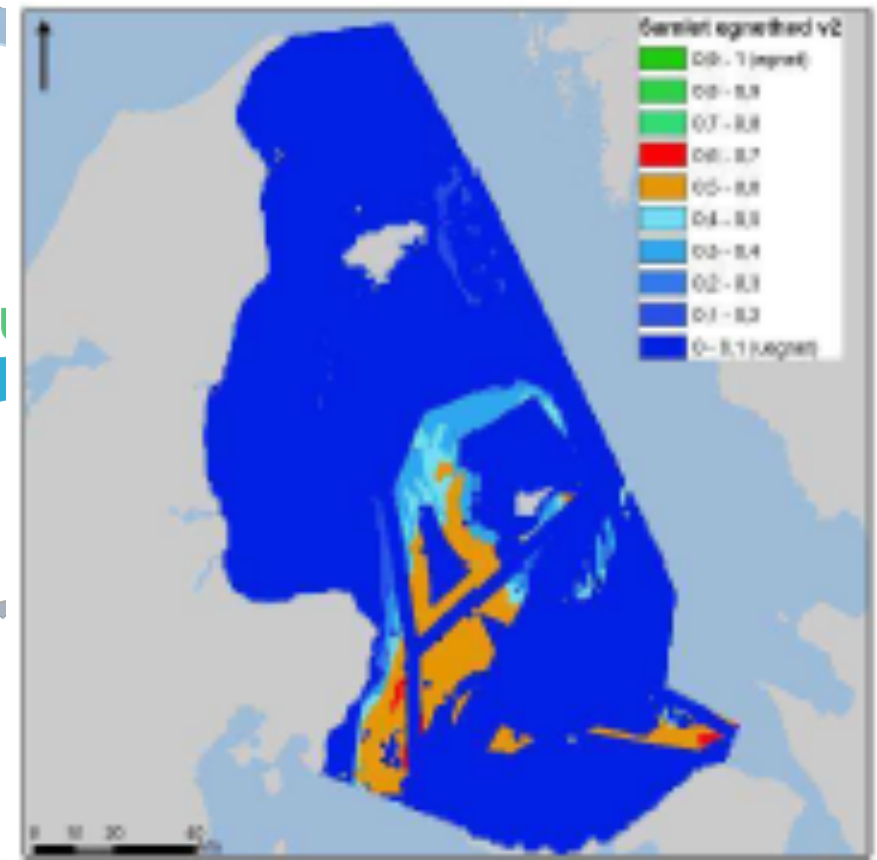
2012-2014: 12 applications for new farms Danish Straits / Baltic Sea

2018 – 2019: 37 applikation for new farms in Kattegat

2019: "Growths in sea cage canceled".



Dansk Akvaku



State of Play - Take home message

- ✓ Freshwater fish farming
- ❖ RAS
- ❖ Sea cage – mass !!!
- ✓ Effluent N og P decreasing
- ❖ Production – no increase - stagnations

Main problems

Habitat-rules

Administrations and decisions

Difficult to get new locations on land

Aquaculture – Clima and Environmental friendly
“Part of the Solution”

EU Green Deal - no green without Blue.



Thank you for your attention

Lisbeth Jess Plesner Lisbeth@danskakvakultur.dk

