

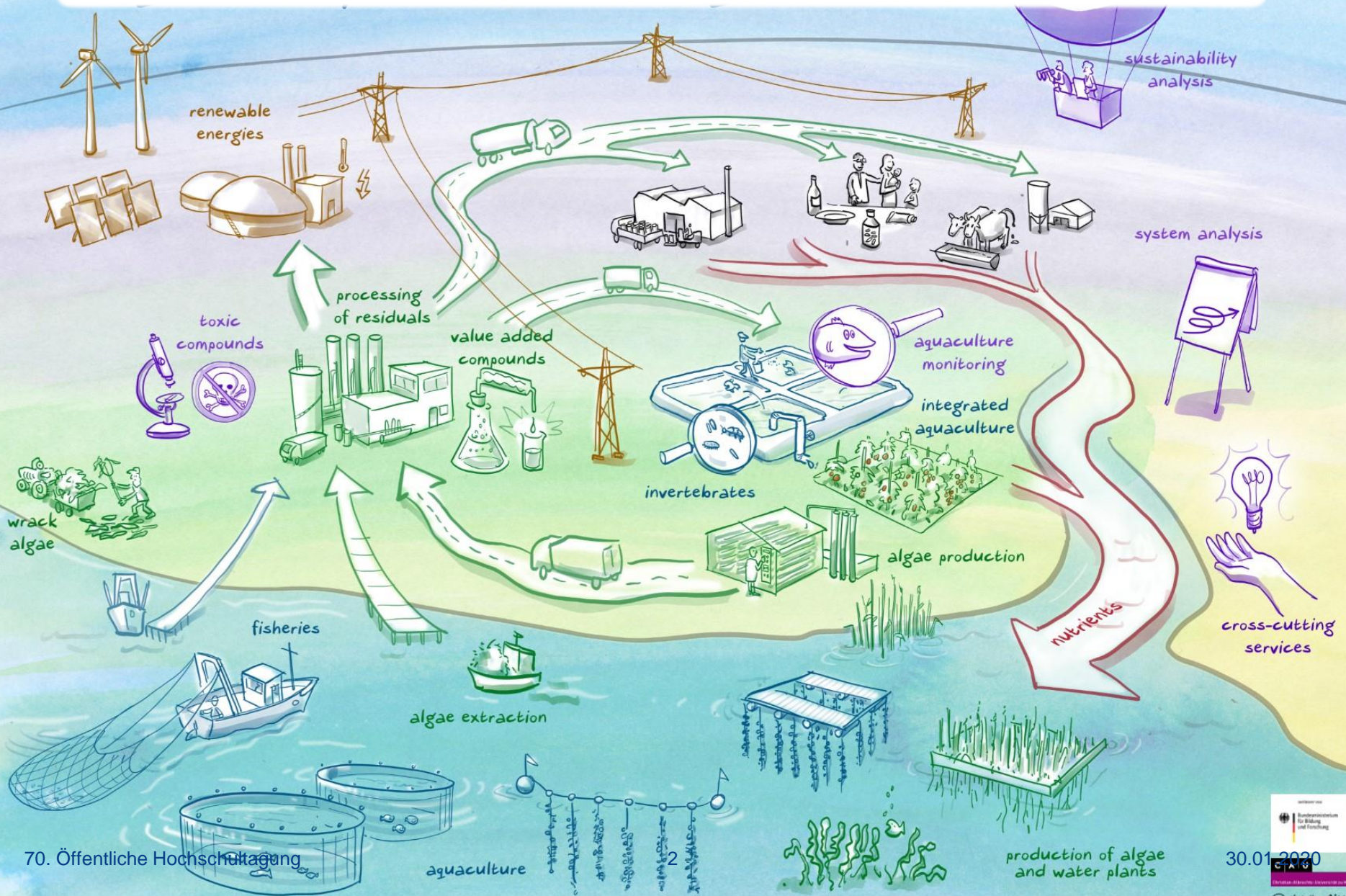
State of play: Aquaculture legislation in Germany

Stefan Meyer

06.02.2020

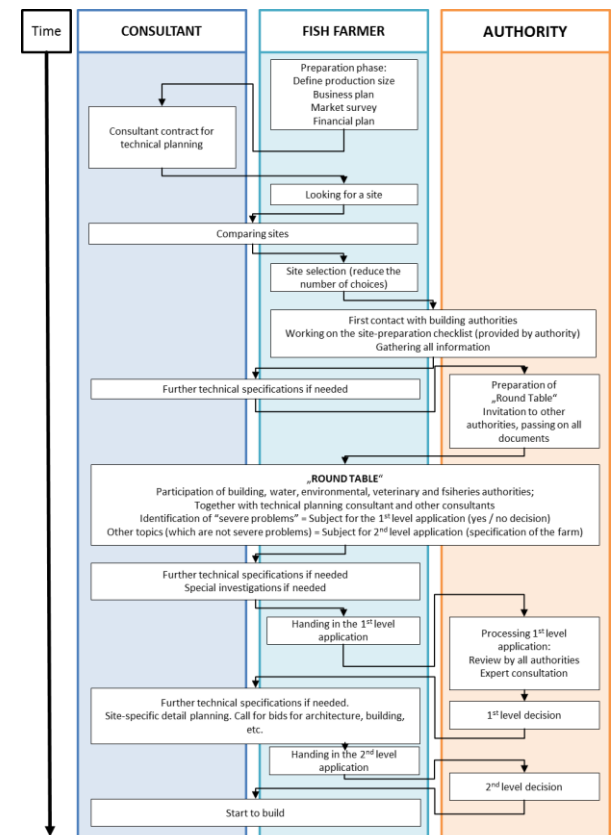
*Blue Platform Workshop - Alignment of Aquaculture
Legislation
Helsinki, FI*

Bioeconomy at Marine Sites (BaMS)



Site selection for RAS

- * **“Planning a RAS project” flow chart**
 - * **“Fish farmer”**
 - * The person who wants to start the RAS farm
 - * Needs to fulfil at least 80% of self-evaluation criteria
 - * 20% (or more) are bought in as consultancy service and are internalized at a later stage
 - * **“Consultant”**
 - * Someone like me in the beginning (free of charge!)
 - * Technical consultant: facility planner, architect, building planner, ...
 - * **“Authority”**
 - * Any competent authority involved in the project

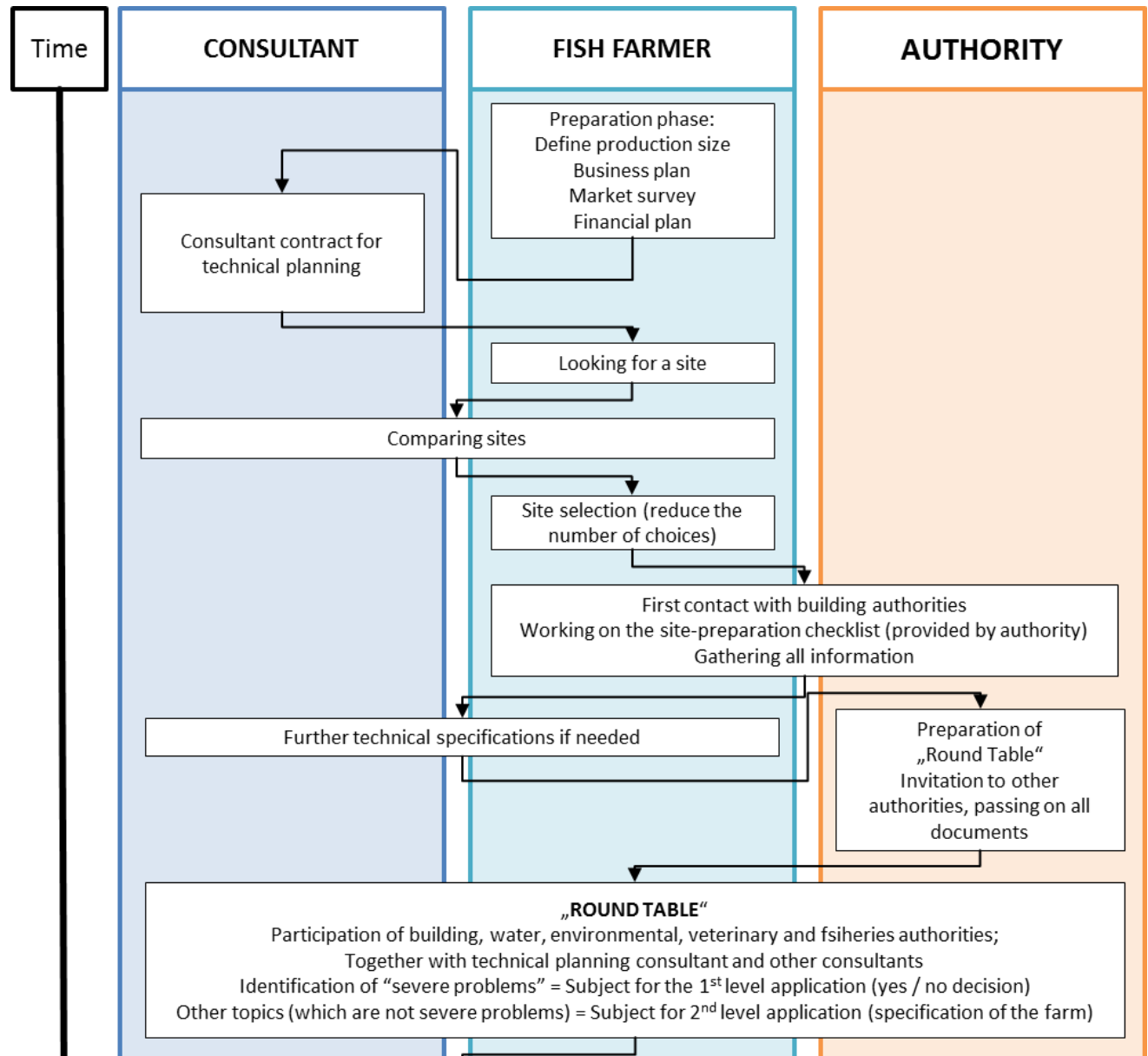


Phase 1:

- Take your time!
- Most work for fish farmer
- Keep consultant costs down

Phase 2:

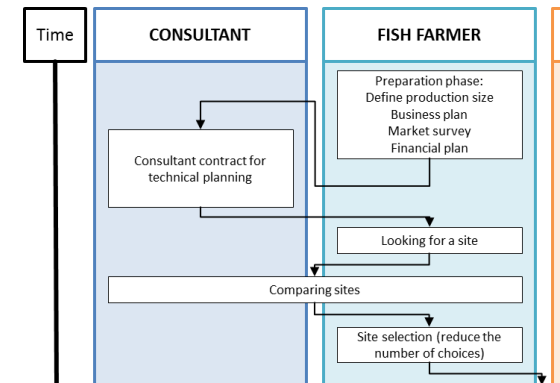
- Get going!
- Buy in all technical specs that are needed
- Leave a good impression with authorities



Site selection for RAS

* Phase 1: How to keep the consultant costs down?

- * Work with published “key performance indicators (KPI)”
 - * 2-8 kWh/kg product
 - * 50 – 300 l/kg feed
 - * “realistic” growth rates and FCRs
 - * Feed cost quote by feed companies
 - * 8 – 12 €/kg investment per production capacity
- * Talk to other fish farmers!
- * Visit a lot of sites!



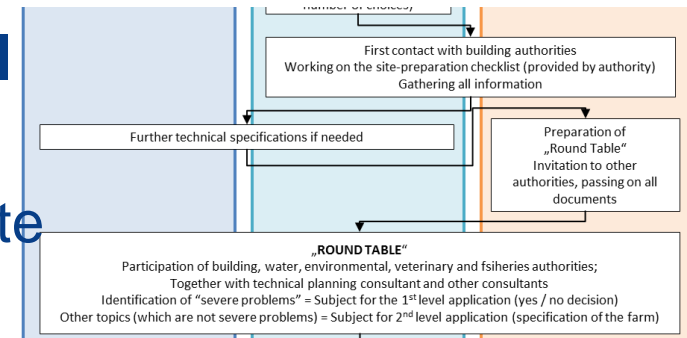
Phase 1:

- Take your time!
- Most work for fish farmer
- Keep consultant costs down

Site selection for RAS

* Phase 2: When to take the final decision on the site?

- * Be sure you know all about the site
 - * Any problems in building?
 - * Archaeological remains or WW2 bombs in the ground?
 - * Hazardous substances in the water?
 - * Nasty neighbours?
 - * Sufficient electricity, water supply, water discharge, street/traffic access?



Phase 2:

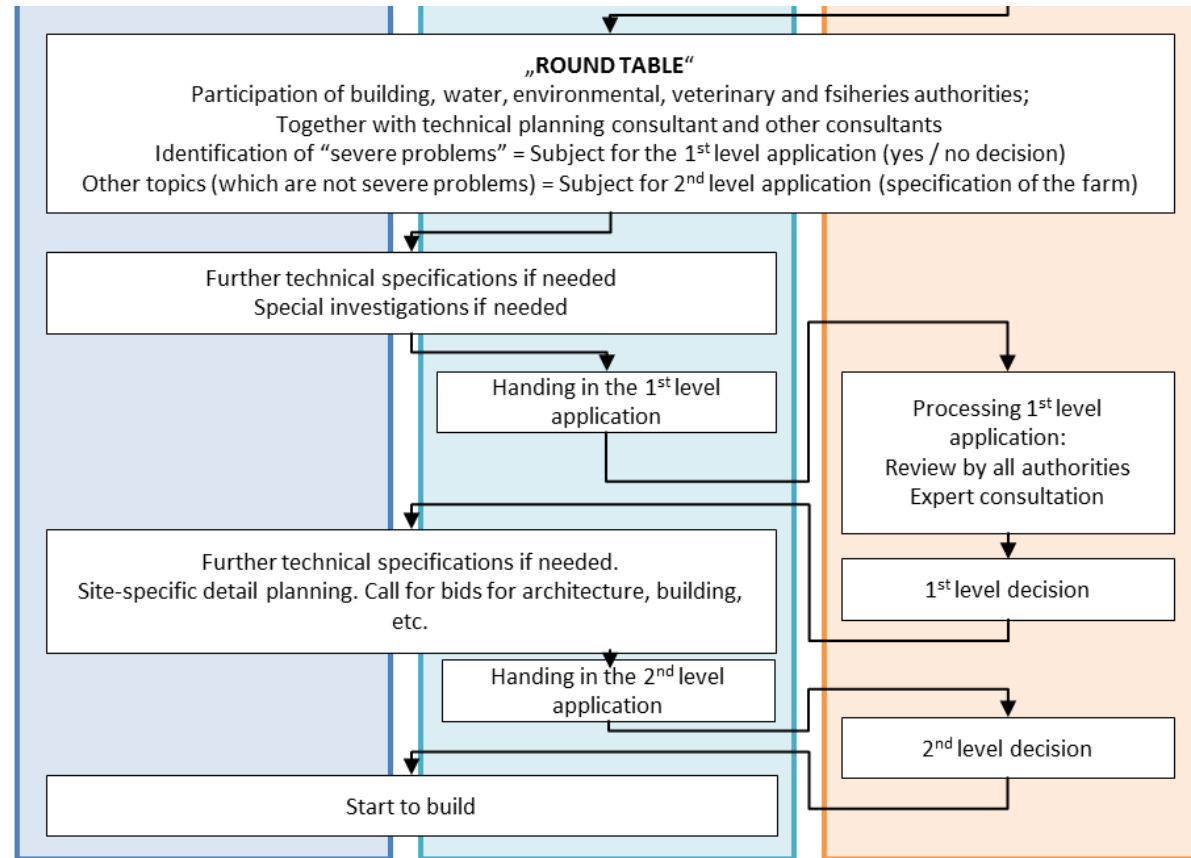
- Get going!
- Buy in all technical specs that are needed
- Leave a good impression with authorities

Phase 3:

- Negotiate hard to get your building permit.
- Show clearly that you are up to serious business.
- Receive your 1st level permit
- Or move somewhere else

Phase 4:

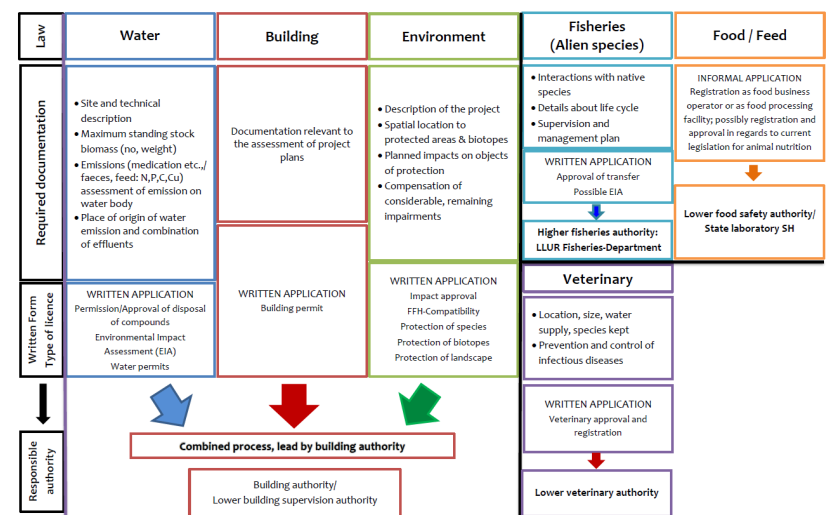
- Now it begins.
- Fine planning.
- Financing needs to be fully in place.
- Funding/subsidies as well.
- Cash flow needed.



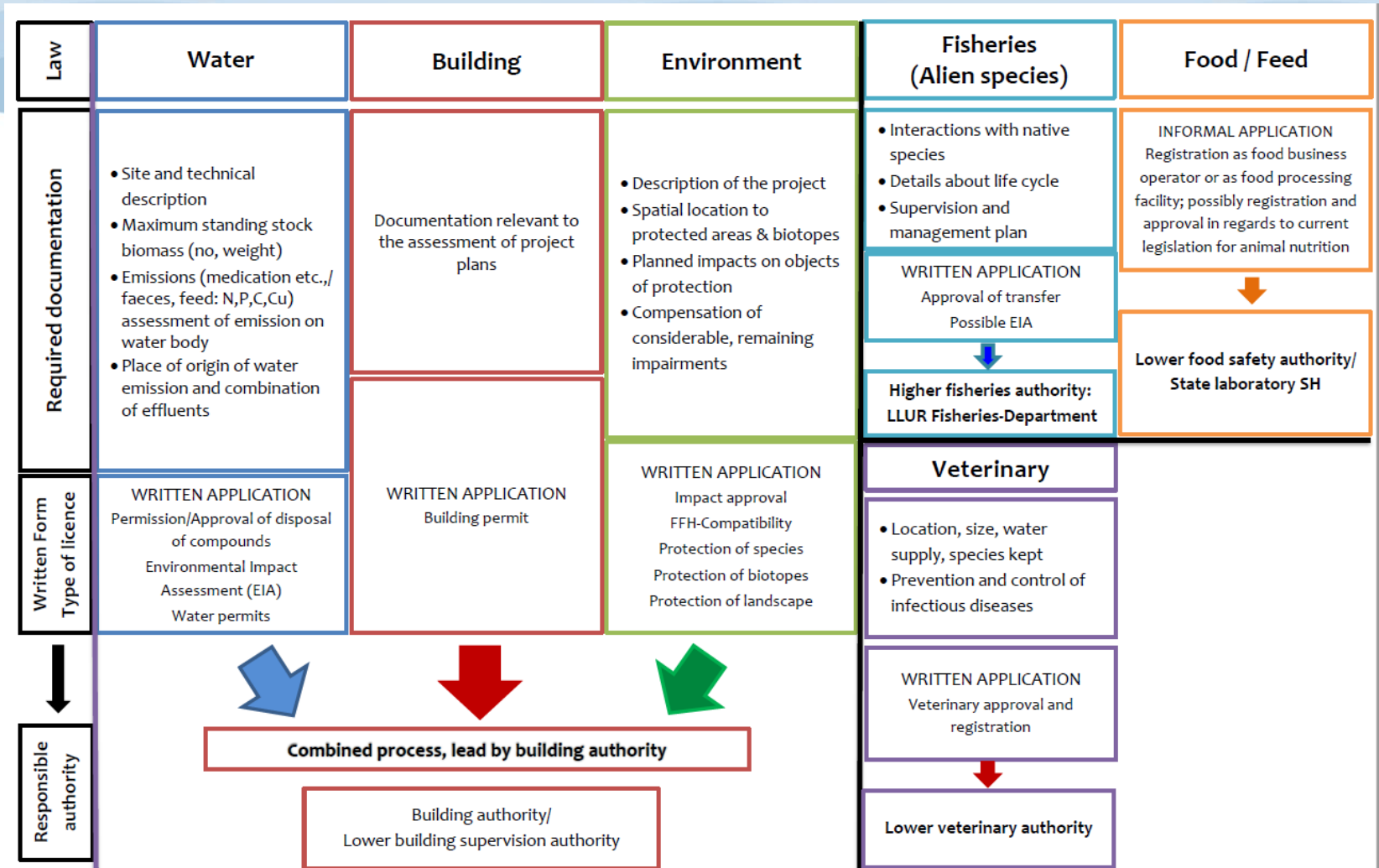
Site selection for RAS

* Legal aspects of starting RAS in Germany

- * For RAS, all really relevant legal aspects are combined under “building law”
- * All critical subjects are addressed in “round table” (Phase 1)
- * 3 months processing until decision
- * Administrative fee typically around 300 €
- * If you are not happy, go for another site!



Legal bodies involved in RAS permission



Planning RAS

Pre-planning

- Business plan
- Marketing concept
- Technical specs

- Free advice throughout preplanning
- Visits to reference sites
- Support to access subsidies

Permission

- Building
- Water
- Environment
- Vet/Hygiene

German legislation:

- 3 months until decision
- No license fee
- Minimal fee for handling application

Roll-out

- Contracting
- Building phase
- Start-up
- Operation

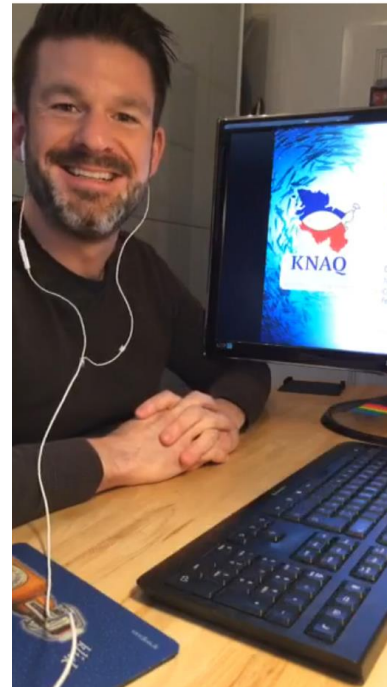
Support in

- procurement
- Staff acquisition
- Identification of R&D needs

Want to hear more?

EAS webinar, 1.5 h, Video available

- * Aquaculture in Northern Germany
- * Recirculating Aquaculture Systems (RAS)
 - * What is RAS?
 - * Is RAS an economically viable method?
 - * Should I start my own RAS production?
- * Site selection for RAS in Germany
 - * Planning RAS
 - * Legal aspects of starting RAS
 - * Synergies with other industries
- * Conclusions on where to start RAS



Site Location and licensing for land-based RAS in Germany – easy isn't it?!?

Dr. Stefan Meyer
Network Coordinator
Competence Network Aquaculture
federal state Schleswig-Holstein

European Aquaculture Society (EAS) Webinar, 05.04.2017

