



# MULTI FRAME

MULTI-FRAME project webinar: *How is ocean multi-use understood and defined worldwide?*

4 December 2020



# Agenda

**2:00 – 2:20** Welcome note and introduction to the MULTI-FRAME project

**2:20 – 2:35** A global approach to Ocean Multi-Use: mapping the diversity of multi-use situations

**2:35 – 2:45** SLI.DO interaction: What is ocean multi-use?

**2:45 – 2:50** COMFORT BREAK (with a short multi-use film screening - UNITED project)

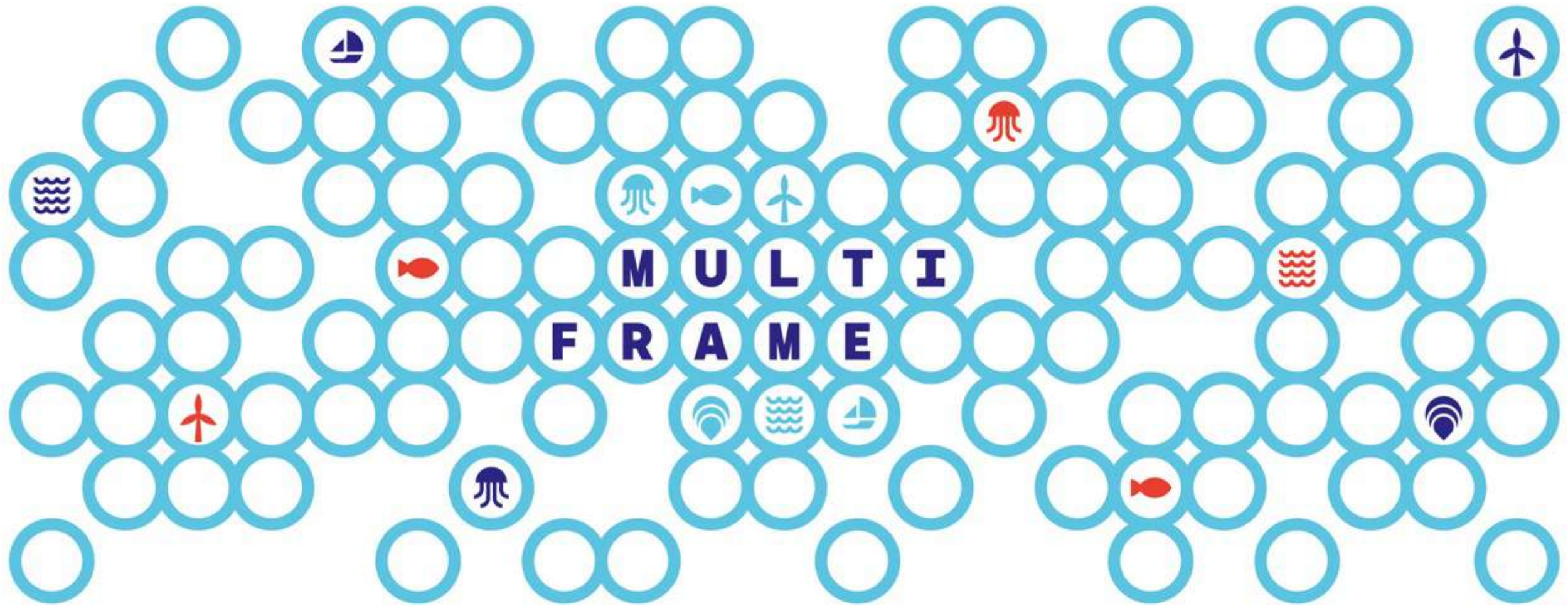
**2:50 – 3:30** Analysing multi-use cases:

1. *Conservation, research and tourism: Stellwagen Bank National Marine Sanctuary (USA)*
2. *Offshore wind energy and nature restoration (The Netherlands)*
3. *Offshore wind energy and tourism: Middelgrunden wind farm boat tours (Denmark)*
4. *Arcachon Bay's aquaculture and tourism (France)*

**3:30 – 3:50** Q&A session via SLI.DO

**3:50 – 4:00** Summary & wrap up



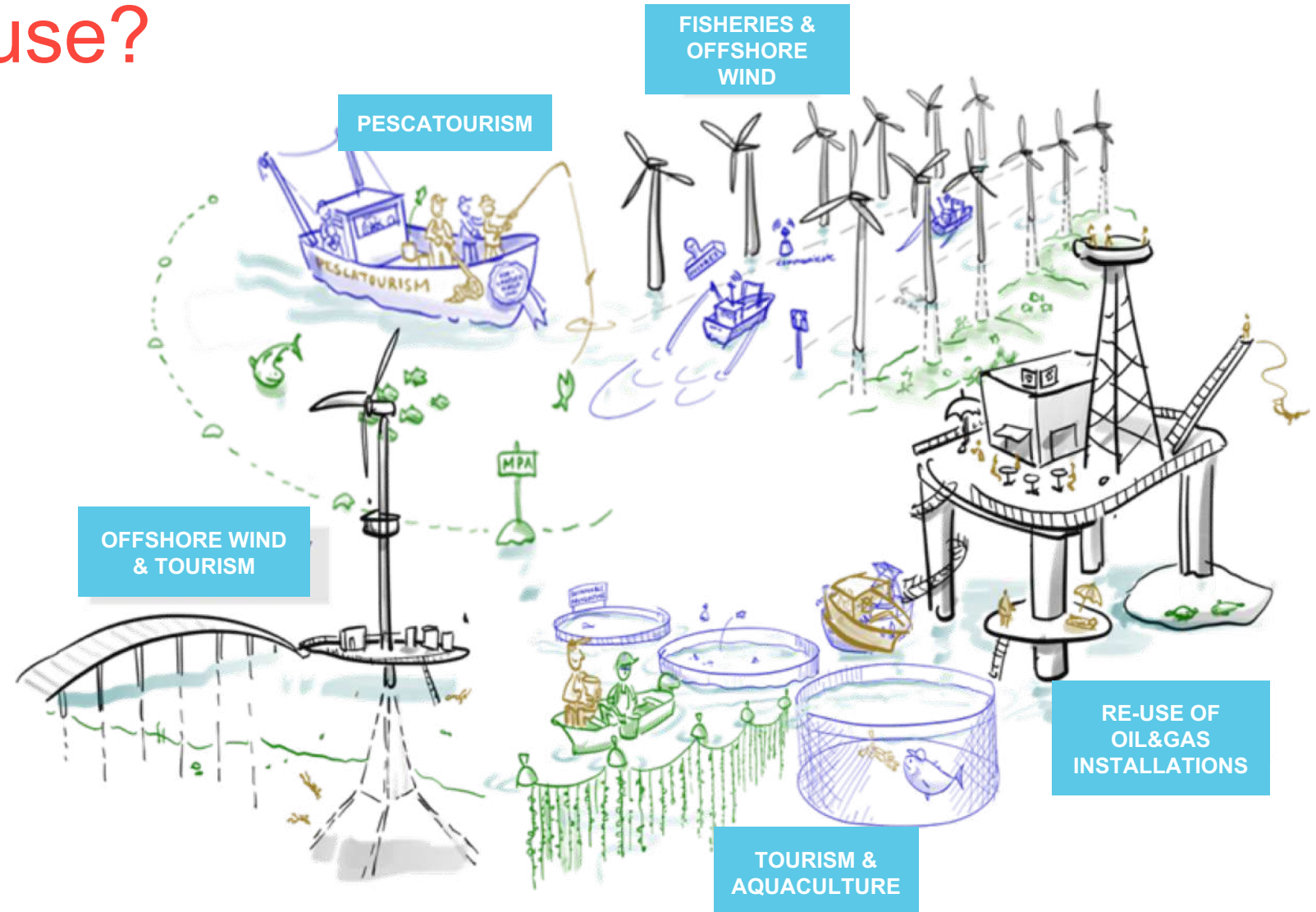


# MULTI-FRAME project introduction

Ivana Lukic, s.Pro – sustainable projects

# What is multi-use?

“...intentional joint use of resources (physical space, platforms, logistics, etc.) by two or more users.  
...a radical change from the traditional concept of exclusive resource rights to inclusive sharing of resources by multiple users.”







# Potential benefits

reduced  
conflicts

efficient use  
of ocean  
space

environmental  
benefits

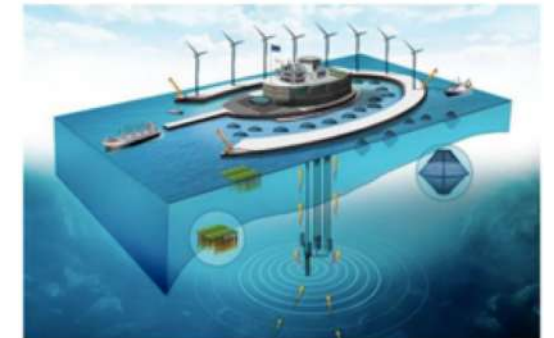
socio-  
economic  
benefits



# Building on research projects

Multi-use has been supported by the international research programmes, and the national funds and planning policy →

Still, the actual multi-use developments are few, mainly due to a lack of knowledge about potential impacts on the economy and the marine environment







# MULTI-FRAME

*Assessment Framework for  
development of viable ocean  
multi-use systems*



# Project aims

- A. Develop concrete open source tools for assessing the sustainability of ocean multi-use solutions;
- B. Conduct the assessment and share the results from 6 case study regions; and
- C. Collect best practice examples of multi-use world-wide.

Results are expected to inform and encourage public authorities to systematically consider the concept of multi-use in their marine planning practices and to streamline it in relevant ocean policies





Duration:  
3 years

Value:  
1.3M Euro



# Collaborative Research Action call

*Transdisciplinary  
Research for  
Ocean  
Sustainability*

**BELMONT**  
F O R U M

future<sup>earth</sup>

JPI  
**OCEANS**





# Case studies

# Continents

## Partners

## Supporting institutions

# Lead: s.Pro







## Case studies

→ More about each case study:  
[MULTI-FRAME.EU](https://MULTI-FRAME.EU)

Case study location	Near-future scenario	Far-future scenario
France (northern Bay of Biscay)	Fisheries/Aquaculture + Tourism	Offshore wind farms + Fisheries/Aquaculture
Mozambique	Fisheries+ Tourism + Conservation	Re-use of oil & gas installations
Sweden (West Coast)	Offshore wind farms + Tourism	Offshore wind farms + Aquaculture
Norway	Aquaculture + Tourism	Aquaculture + decommissioned oil & gas installations
United States (Rhode Island)	Offshore wind farms + Tourism	Offshore wind farms + Fisheries
Brazil (Santa Catarina State)	Tourism + Fisheries + Conservation	Tourism + Fisheries + Conservation



# Project Partners

## MULTI-FRAME Partnership



First MULTI-FRAME webinar: *How is ocean multi-use understood and defined worldwide?* 4 December 2020





# s.Pro – sustainable projects GmbH

## Lead partner

*Consulting company with more than fifteen years of experience in the management of international projects in the sphere of ocean policy, marine spatial planning and blue economy!*



### TEAM members:

- Ivana Lukic
- Susanne Altvater
- Angela Schultz-Zehden
- Clare Waldmann
- Lisa Simone de Grunt

### Role in the project:

- Coordination & communications
- Stakeholder analysis & engagement
- ToolKit compilation



# Møreforsking AS



*Largest non-profit regional institute in Norway conducting conduct applied research on topics related to marine- and social sciences, transport economy and logistics!*

## TEAM member:

- Celine Rebours
- Linn Kristin Akslen-Hoel

## Role in the project:

- Coordination of case studies
- Leading the case study in Norway



# University of Rhode Island

*The University of Rhode Island, Graduate School of Oceanography, Coastal Resources Center is a leader and champion for the integration of human and socio-economic aspects into coastal and marine issues such as sea-level rise, shoreline change, habitat conservation, offshore resources and sustainable fisheries and aquaculture.*

## TEAM members:

- J.P. Walsh
- Jennifer McCann
- Peter Freeman
- Clayton Starr

## Role in the project:

- Leading the development of the assessment framework
- Leading the case study in Rhode Island (USA)





# University of Nantes

*Major place for higher education and research in France! LETG lab develops research in coastal and marine geography, as well as in geomatics.*



## TEAM members:

- Brice Trouillet
- Josselin Guyot Tephany

## Role in the project:

- Leading the baseline research
- Leading the case study in France



# Eduardo Mondlane University Museu de Historia Natural

*Carries out research on marine mammal conservation, terrestrial mammals conservation and planning, marine and freshwater fish taxonomy and phylogeny, invertebrate biology with emphasis on marine crustaceans linked with fisheries.*



## TEAM member:

- Almeida Guissamulo

## Role in the project:

- Supporting the baseline research
- Leading the case study in Mozambique



# Royal Institute of Technology

*Largest, oldest and most international technical university in Sweden! Education and research spans from natural sciences to all the branches of engineering and includes architecture, industrial management and urban planning.*



## TEAM member:

- Fredrik Grondahl

## Role in the project:

- Leading the analysis and synthesis
- Leading the case study in Sweden





# Federal University of Santa Catarina

*One of the leading research universities in south Brazil - The Oceanography Department focuses on investigating systems, processes and the abiotic and biotic phenomenon of the marine environment and their management.*



## TEAM members:

- Marinez Scherer
- Sereno Diederichsen
- Francisco Veiga Lima

## Role in the project:

- Supporting the baseline research
- Leading the case study in Brazil



# SUBMARINER Network for Blue Growth EEIG

*An umbrella organisation that initiates partnerships and projects by bringing together national and regional authorities, research institutions, business associations and consulting companies involved in promoting combined and sustainable blue economy solutions.*



## TEAM members:

- Angela Schultz-Zehden
- Efthalia Arvaniti
- Laurine Tertre

## Role in the project:

- Communications, dissemination
- Website, events and outreach



# Advisory Board

List of members



# Advisory Board

Aleksandra Dragozet	Netherlands	Sea Going Green
Beth Fulton	Australia	Blue Economy CRC
Alejandro Iglesias Campos	Spain	IOC-UNESCO
Anna Szegvari-Mas	Réunion	Regional Council of Réunion Island
Jacek Zaucha	Poland	Maritime Institute in Gdańsk
Uwe Freiherr von Lukas	Germany	Fraunhofer institute
Vincent Doumeizel	France	United Nations, Global Compact / Lloyd's Register Foundation
Marijn Rabaut / Ann Overmeire	Belgium	Blue Cluster
Malcolm Morrison/ Femke de Boer	United Kingdom	Scottish Fishermen's Federation
Wynand Boonstra	Sweden	Uppsala University





# Ocean Multi-Use Knowledge Network

- Aims to support the exchange of knowledge and opportunities on the topic of multi-use
- Led by the SUBMARINER Network and the MULTI-FRAME project – global initiative!

More information about the **Ocean Multi-Use Knowledge Network** at:

<https://www.submariner-network.eu/ocean-multi-use-knowledge-network>

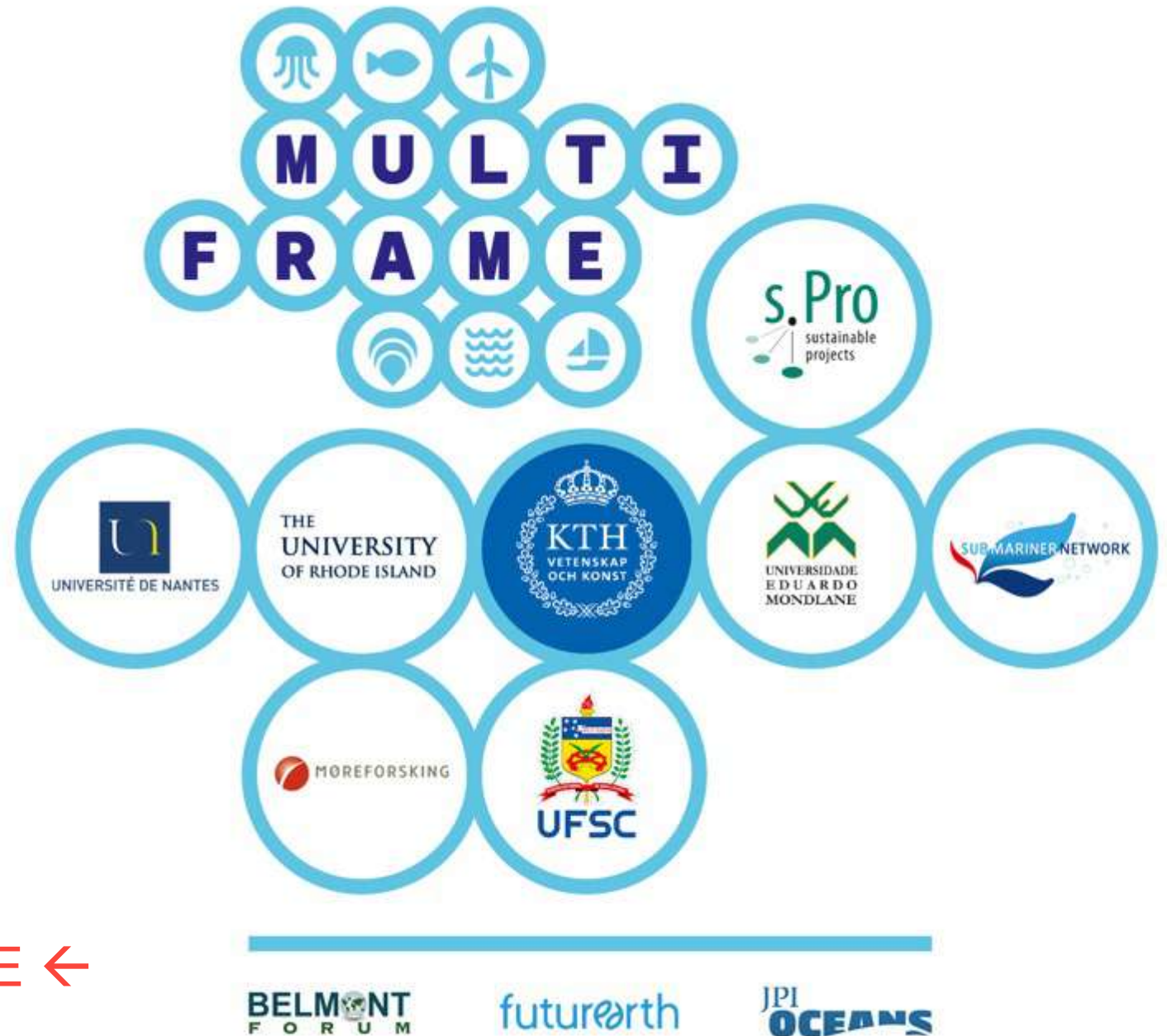
**Register your interest to join the Network!** <https://form.jotform.com/203173436109349>

Or get in touch with us directly:

→ [il@submariner-network.eu](mailto:il@submariner-network.eu)

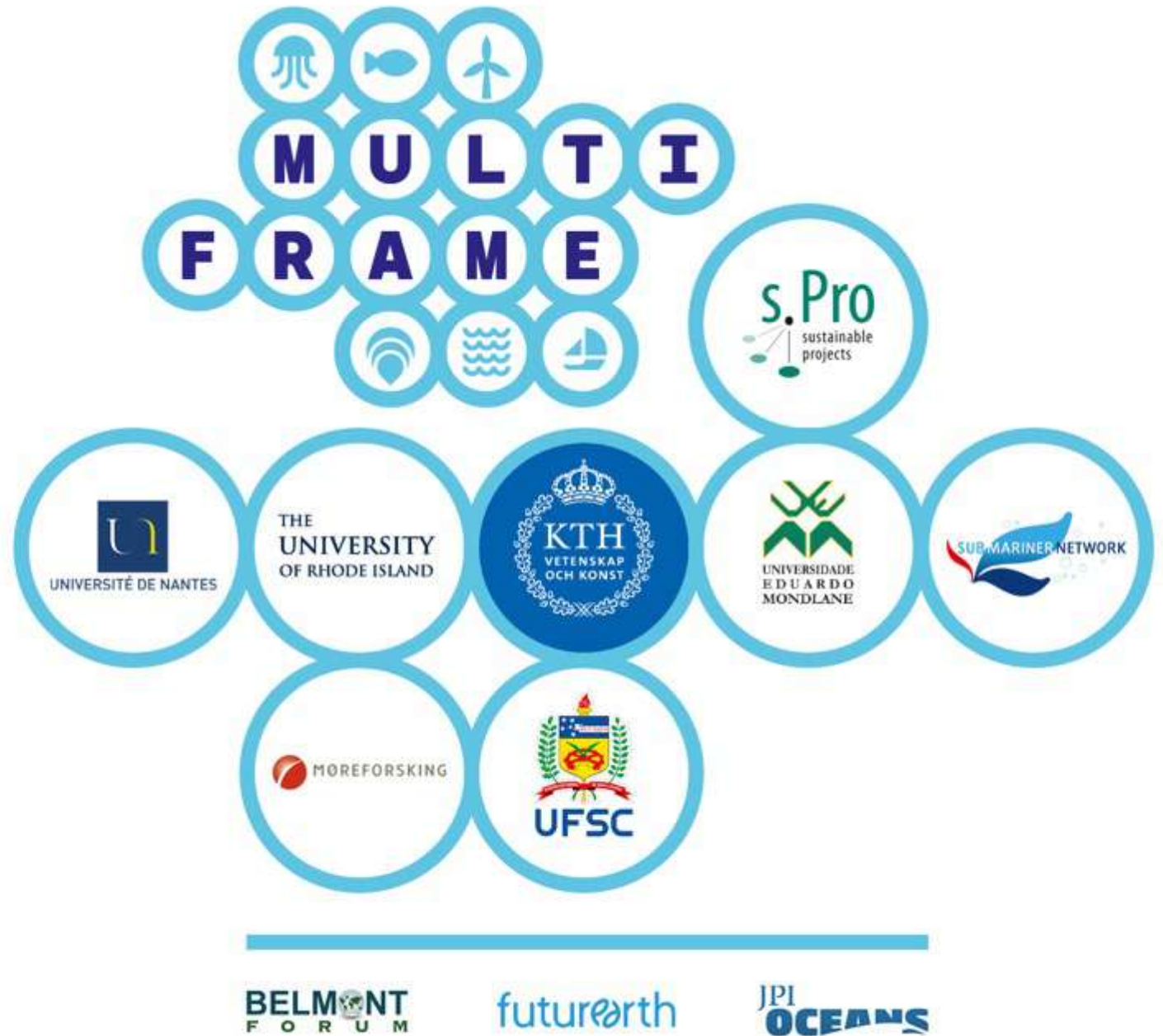
Thank you!

Project coordinator:  
Ivana Lukic  
il@sustainable-projects.eu



→ sli.do code #MULTI-FRAME ←

# Comfort brake 2:45 – 2:50





## 2:50 – 3:30 Analysing multi-use cases:

### ***1. Conservation, research and tourism: Stellwagen Bank National Marine Sanctuary (USA)***

Ben Haskell, Deputy Superintendent, Stellwagen Bank National Marine Sanctuary

### ***2. Offshore wind energy and nature restoration (The Netherlands)***

Eline van Onselen, Marine Ecologist, De Rijke Noordzee – The Rich North Sea Program

### ***3. Offshore wind energy and tourism: Middelgrunden wind farm boat tours (Denmark)***

Hans Chr Soersen, Energy expert and CEO, SPOK

### ***4. Arcachon Bay's aquaculture and tourism (France)***

Elody Etchegaray, Atlantic Great Littoral Association (AGLIA)





# MULTI FRAME

## Mapping Ocean Multi-Use Diversity

Josselin Guyot-Téphany & Brice Trouillet ([University of Nantes](#), [LETG](#))

WP1 Webinar - December 4<sup>th</sup> 2020



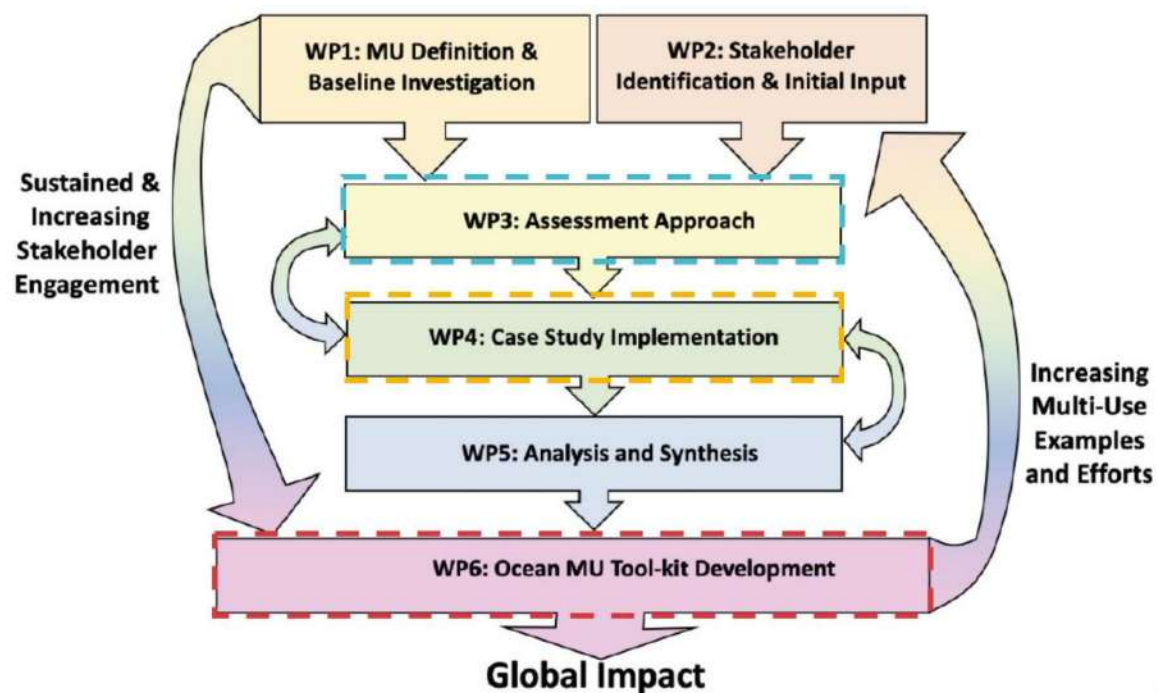


# INTRODUCTION





## WP1 BASELINE INVESTIGATION



WP1 ⇒ defining and reviewing ocean multi-use globally







# I. ANALYSING MULTI-FRAME'S DATABASE

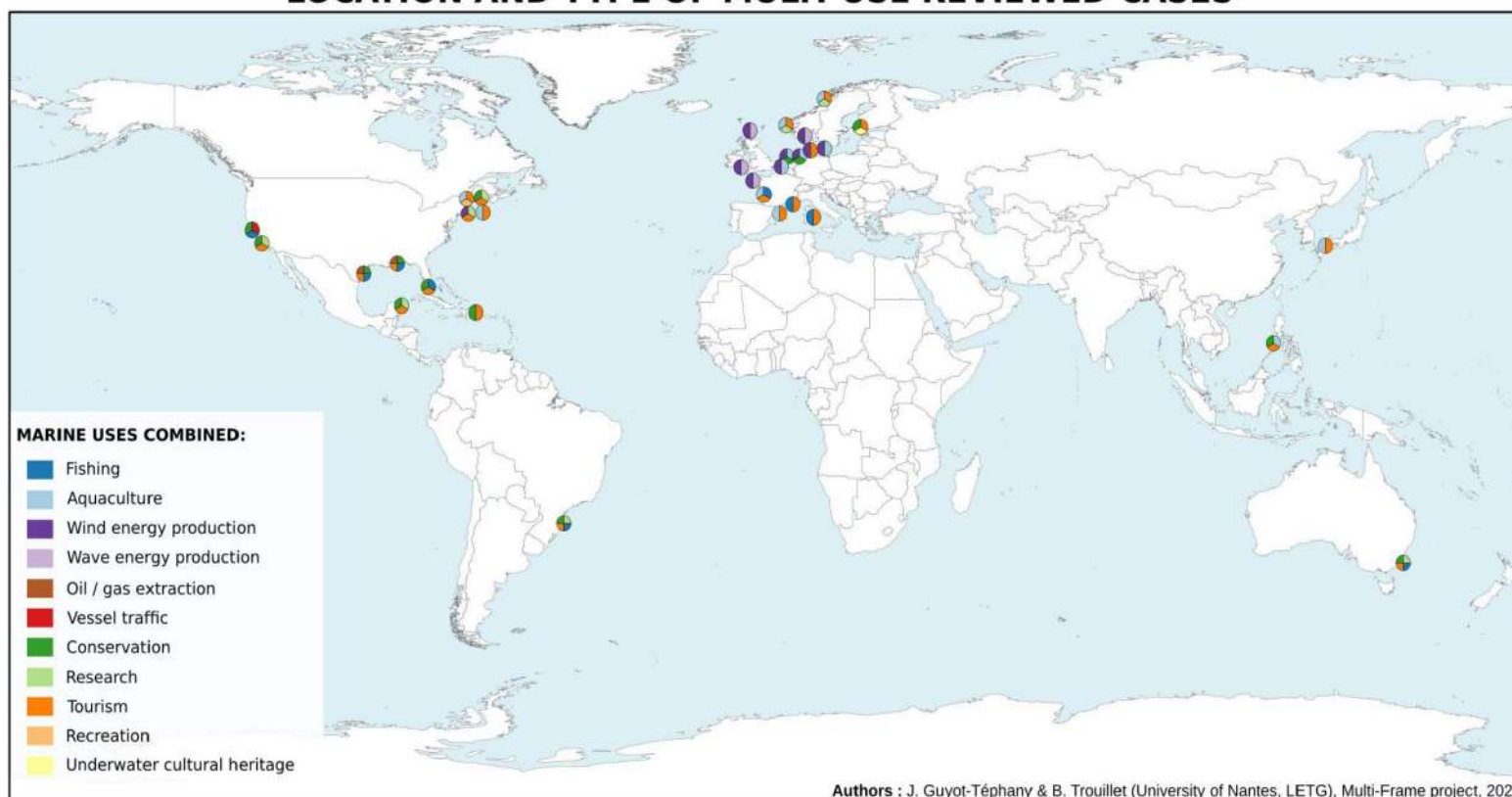






## 1.1. A GLOBAL APPROACH TO OCEAN MULTI-USE

LOCATION AND TYPE OF MULTI-USE REVIEWED CASES



Authors : J. Guyot-Téphany & B. Trouillet (University of Nantes, LETG), Multi-Frame project, 2020





## 1.2. LOOKING FOR MULTI-USE

The wide array of situations reviewed  
raised questions with regards to ocean MU's concept

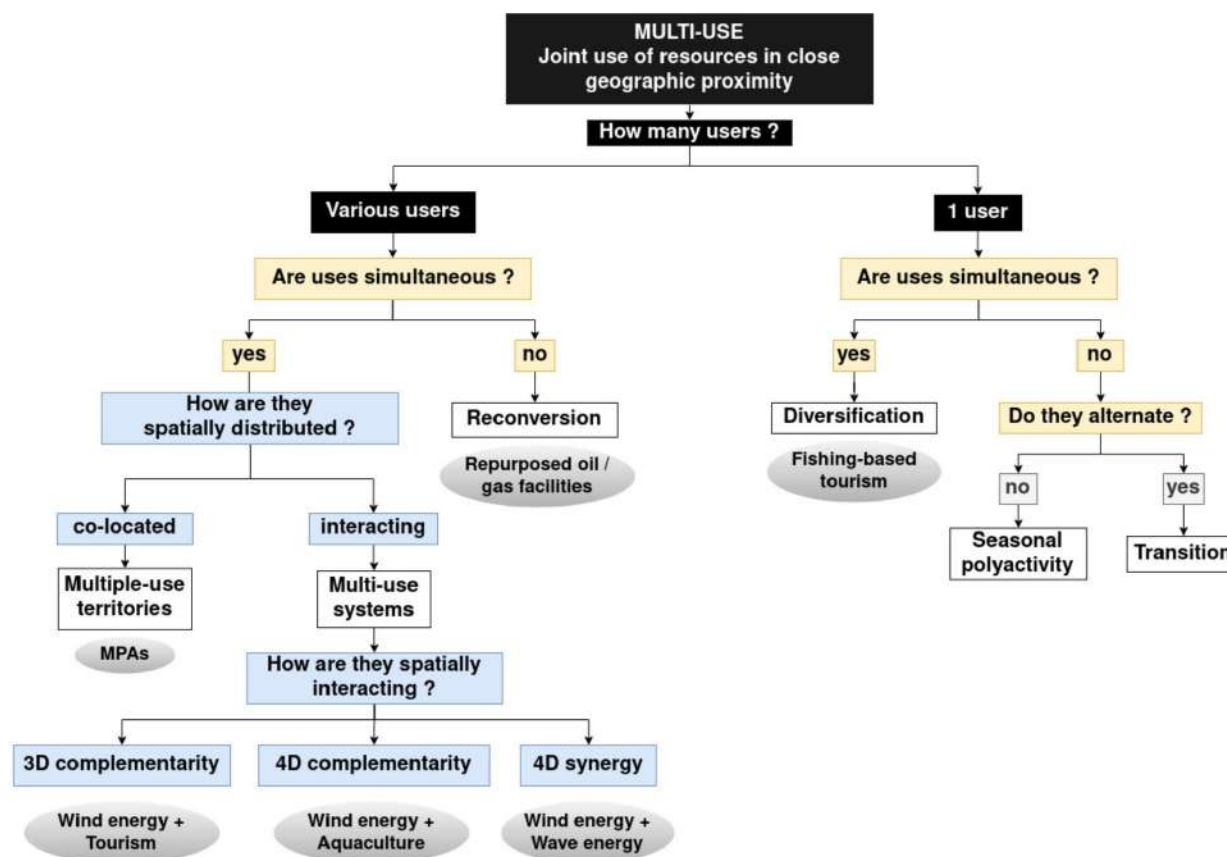
1. MPAs are recognized as **multiple use territories** , but doesn't fit very well with **multi-use concept**
2. Numerous "borderline" cases  
↳ **interactions / integrated management or synergies?**
3. More pilots projects than "real" existing MU cases  
↳ **descriptive or prescriptive concept?**

⇒ **Refine multi-use's definition and interrogate its narratives**





## 1.3. DRAFTING A SPATIO-TEMPORAL TYPOLOGY





## II. MAPPING MULTI-USE INVESTIGATION

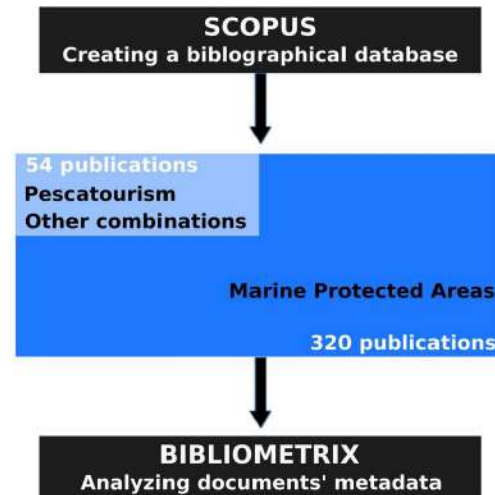






## 2.1. FROM SCOPUS TO BIBLIOMETRIX

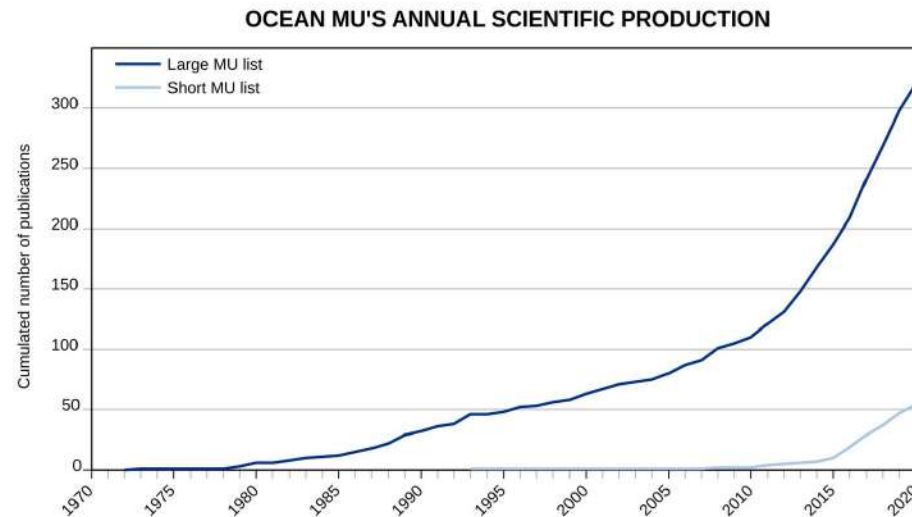
Broad / narrow definitions of ocean multi-use





## 2.2. DYNAMICS OF MUTLI-USE RESEARCH

- Large MU collection : 10 doc. > 100 cit. → **all dealing with MPAs and MSP**
- 1<sup>st</sup> short MU collection doc (51 cit.)
  - ↳ **Meeting the quest for spatial efficiency** (Buck et al. 2008)
- **Political drivers:** GBRMP to MSP / EU projects and 2014 MSP Directive



Source : Scopus, 2020

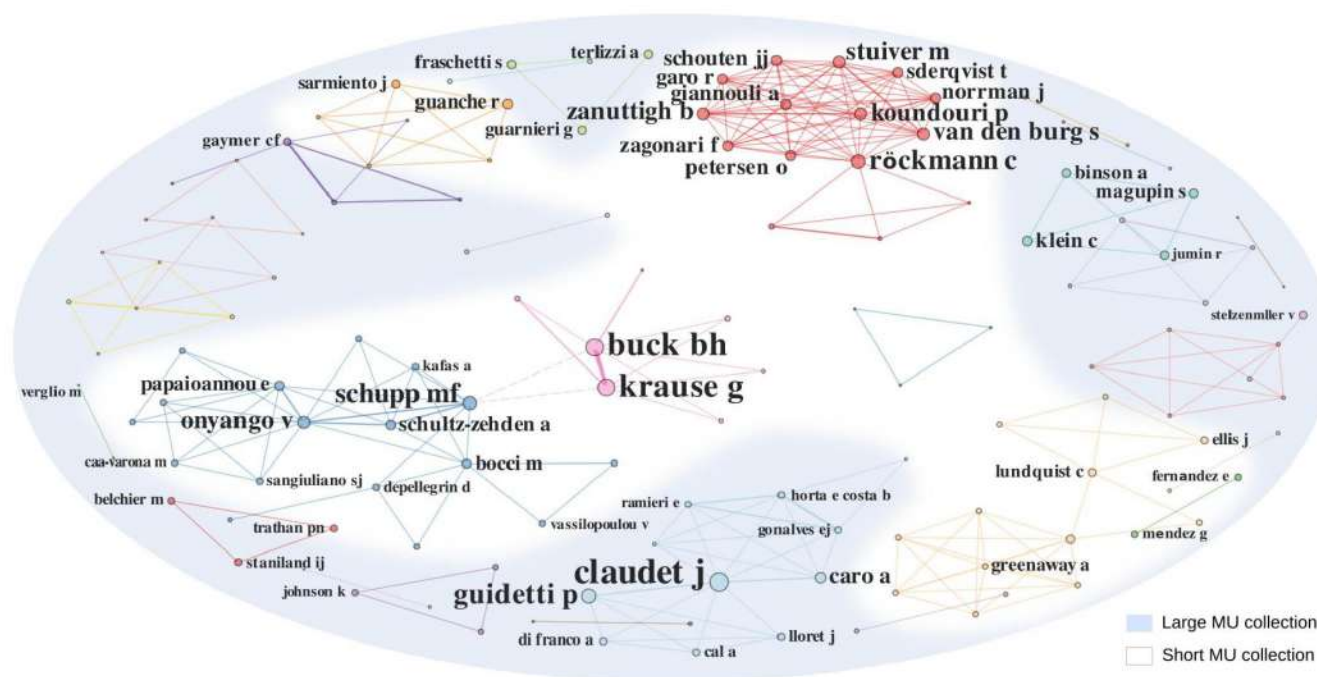
Authors : J. Guyot-Téphany & B. Trouillet (University of Nantes, LETG), Multi-Frame project, 2020





## 2.3. DISTINCT SCIENTIFIC COMMUNITIES

### AUTHORS COLLABORATION'S NETWORK



Source : Scopus, 2020

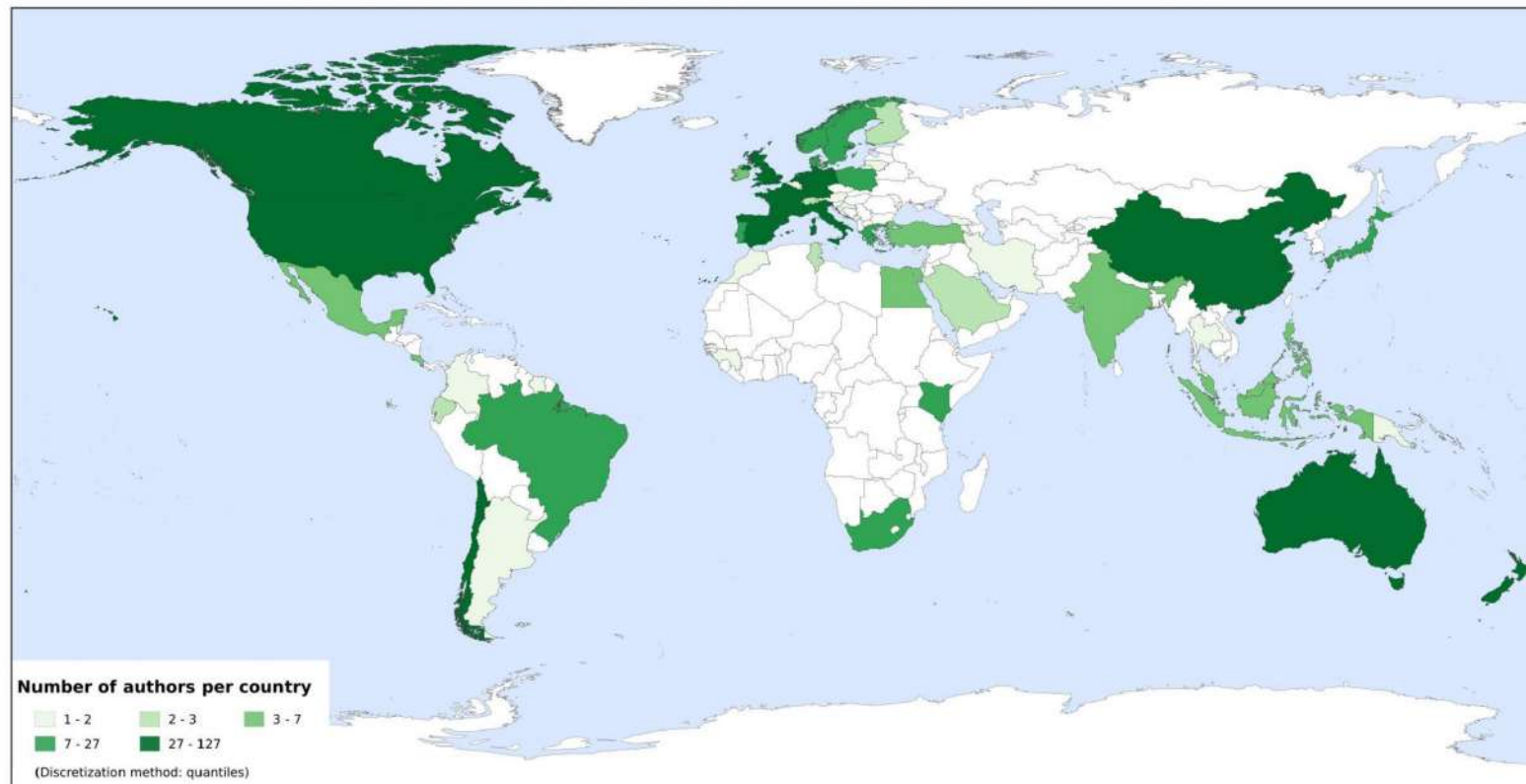
Authors : J. Guyot-Téphany & B. Trouillet (University of Nantes, LETG), Multi-Frame project, 2020





## 2.4. LARGE MU = GLOBAL RESEARCH

### GEOGRAPHY OF LARGE MU SCIENTIFIC PRODUCTION



Source : Scopus, 2020

Authors : J. Guyot-Téphany & B. Trouillet (University of Nantes, LETG), Multi-Frame project, 2020





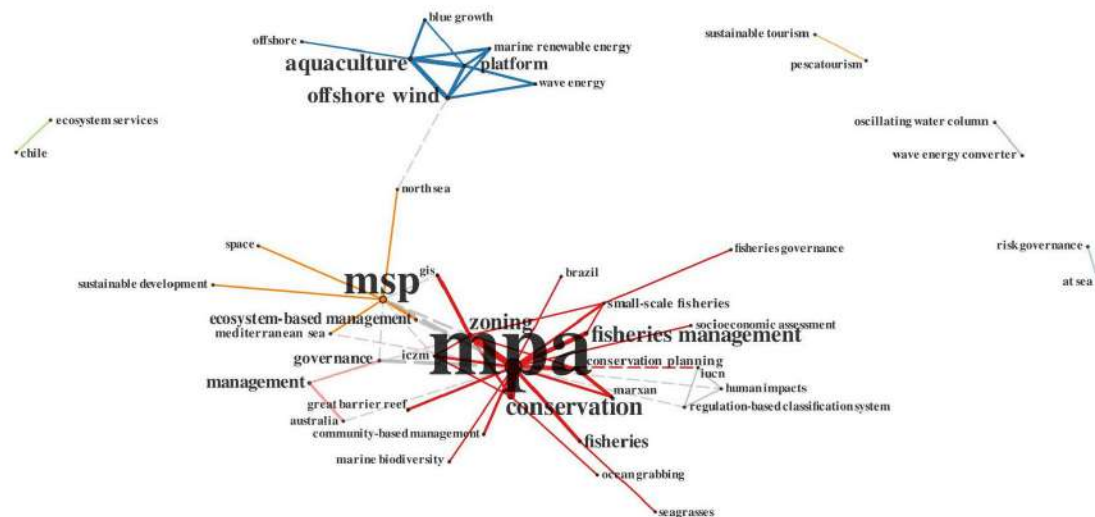






## 2.6. CONCEPTUAL UNIVERSES OF MULTI-USE RESEARCH

### AUTHORS KEYWORDS' CO-OCCURRENCE NETWORK LARGE MU COLLECTION



Source : Scopus, 2020

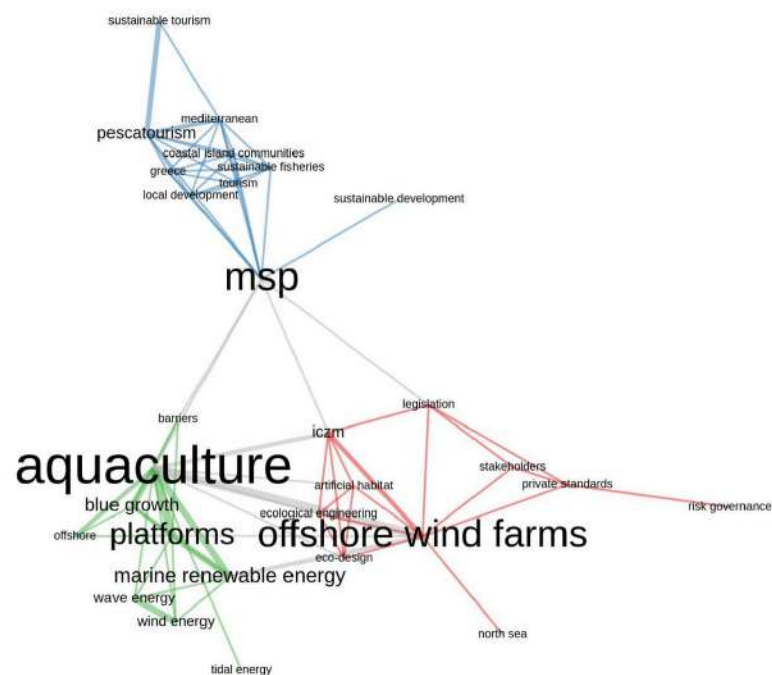
Authors : J. Guyot-Téphany & B. Trouillet (University of Nantes, LETG), Multi-Frame project, 2020





## 2.7. NARROW MULTI-USE DEFINITION NARRATIVES

**AUTHORS KEYWORDS' CO-OCCURRENCE NETWORK  
SHORT MU COLLECTION**



Source : Scopus, 2020

Authors : J. Guyot-Téphany & B. Trouillet (University of Nantes, LETG), Multi-Frame project, 2020





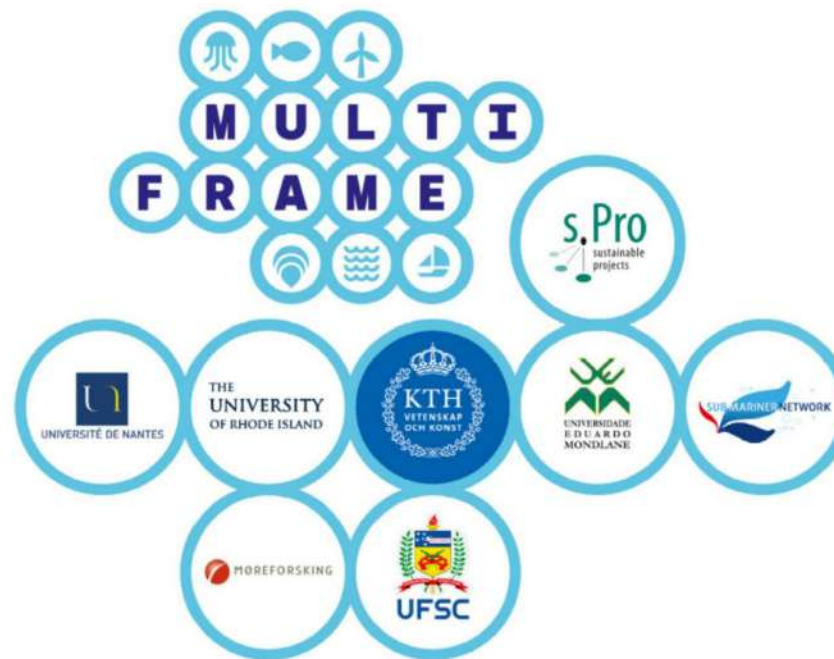
# CONCLUSIONS

1. Investigating multi-use globally (WP1 / WP2 / WP5)  
↳ connect broad and narrow definitions
  
2. Promoting multi-use (WP2 / WP4 / WP6 )  
↳ cast a critical eye on multi-use while encouraging really sustainable and community-based forms





Thank you!



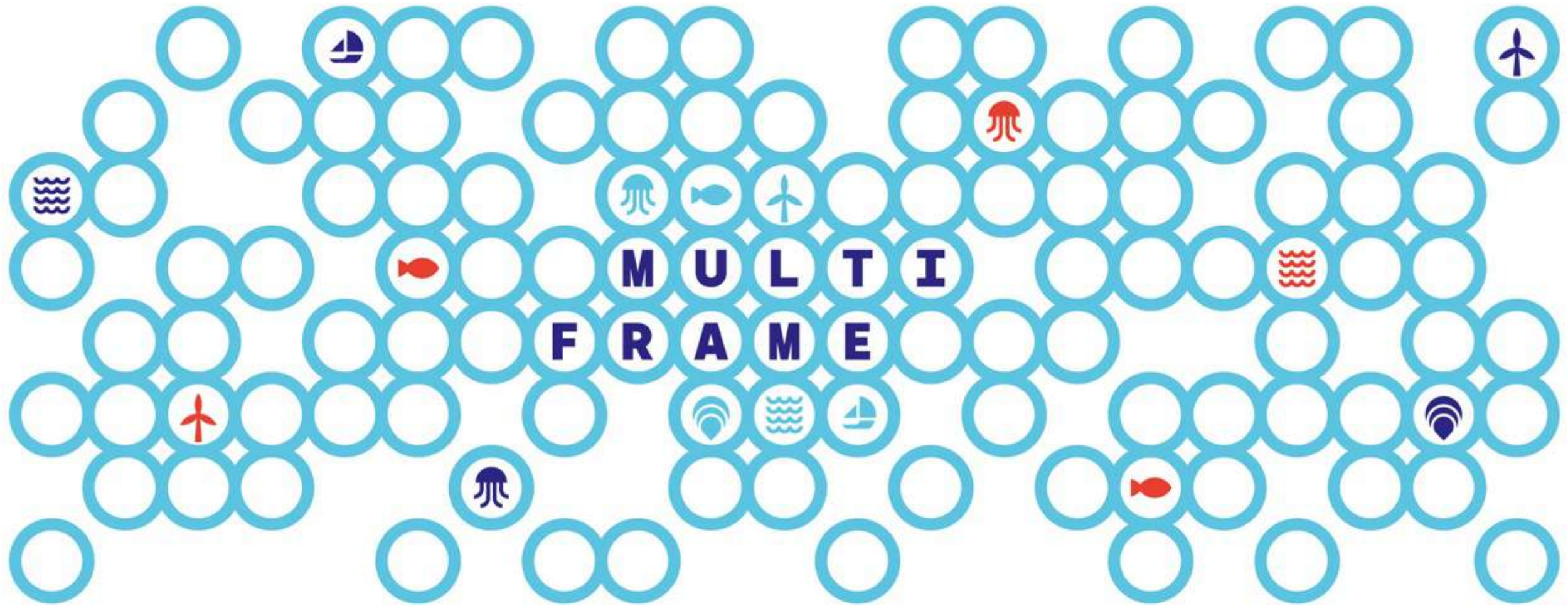
BELMONT  
FORUM

futureørth

JPI  
OCEANS







# Conservation, research, and whale watching in Stellwagen Bank National Marine Sanctuary (USA)

Presenter: Benjamin Haskell, Deputy Superintendent



## Aims:

- A. Understand the context (legal authorities, resources, uses) of SBNMS
- B. Understand the context of whale watching ecotourism (management, extent of activity, economics)
- C. Understand the risks and opportunities posed by whale watching
- D. Provide considerations for MULTIFRAME spaces



# New England's only National Marine Sanctuary

*Designated 1992*



**638 square nm**  
**2,188 square km**

## Our Mandate and Mission

- *National Marine Sanctuaries Act of 1972 calls for coordinated conservation, maintaining the natural biological communities, supporting research and long-term monitoring, and facilitating uses that are compatible with resource protection among other purposes*
- *1992 amendment designated Stellwagen Bank National Marine Sanctuary*
- **Mission: To conserve, protect and enhance the biodiversity, ecological integrity and cultural legacy of the sanctuary while allowing for compatible use**



Maritime Heritage



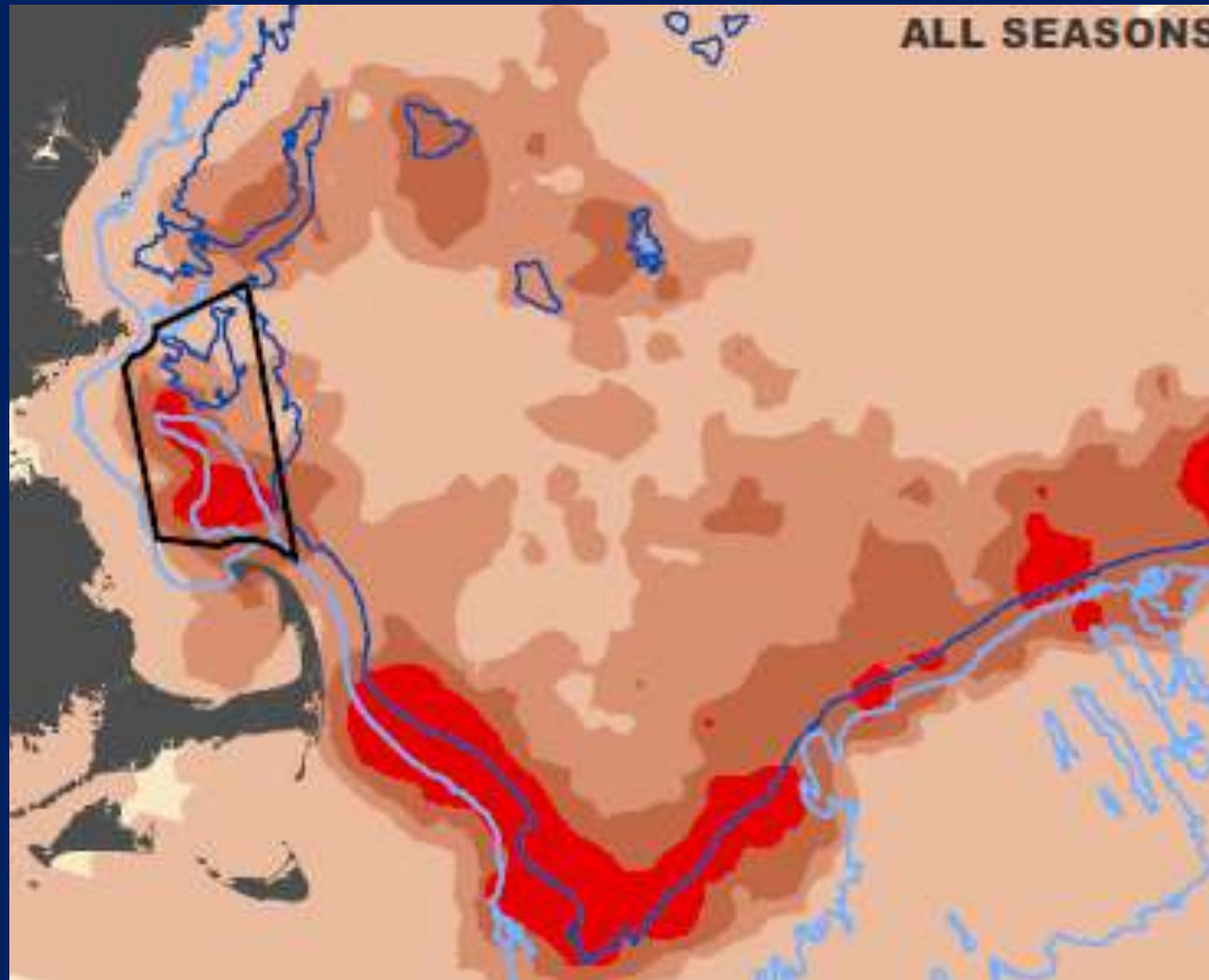
Biodiversity Conservation



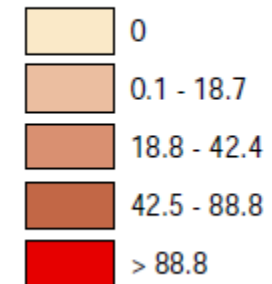
Marine Mammal Protection



# Baleen Whales 2006



## SPUE (Quantile)



NOAA – NCCOS (Figure excerpted from Pittman et al., 2006)

Characterizing the noise  
influence of the many types of  
commercial and recreational  
vessel traffic

Black = AIS



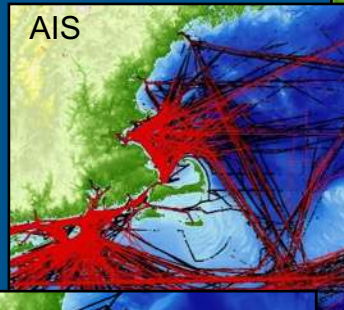
Red = Whale Watch



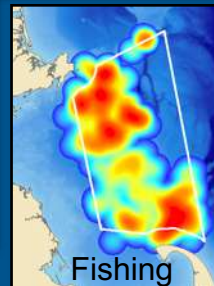
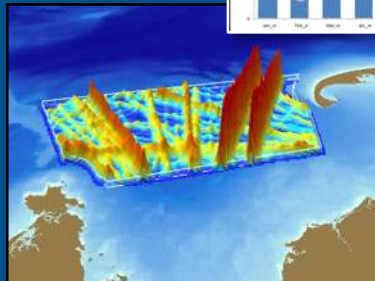
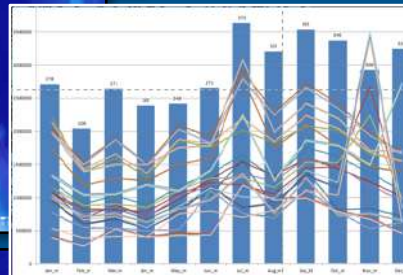
Pink = VMS



AIS

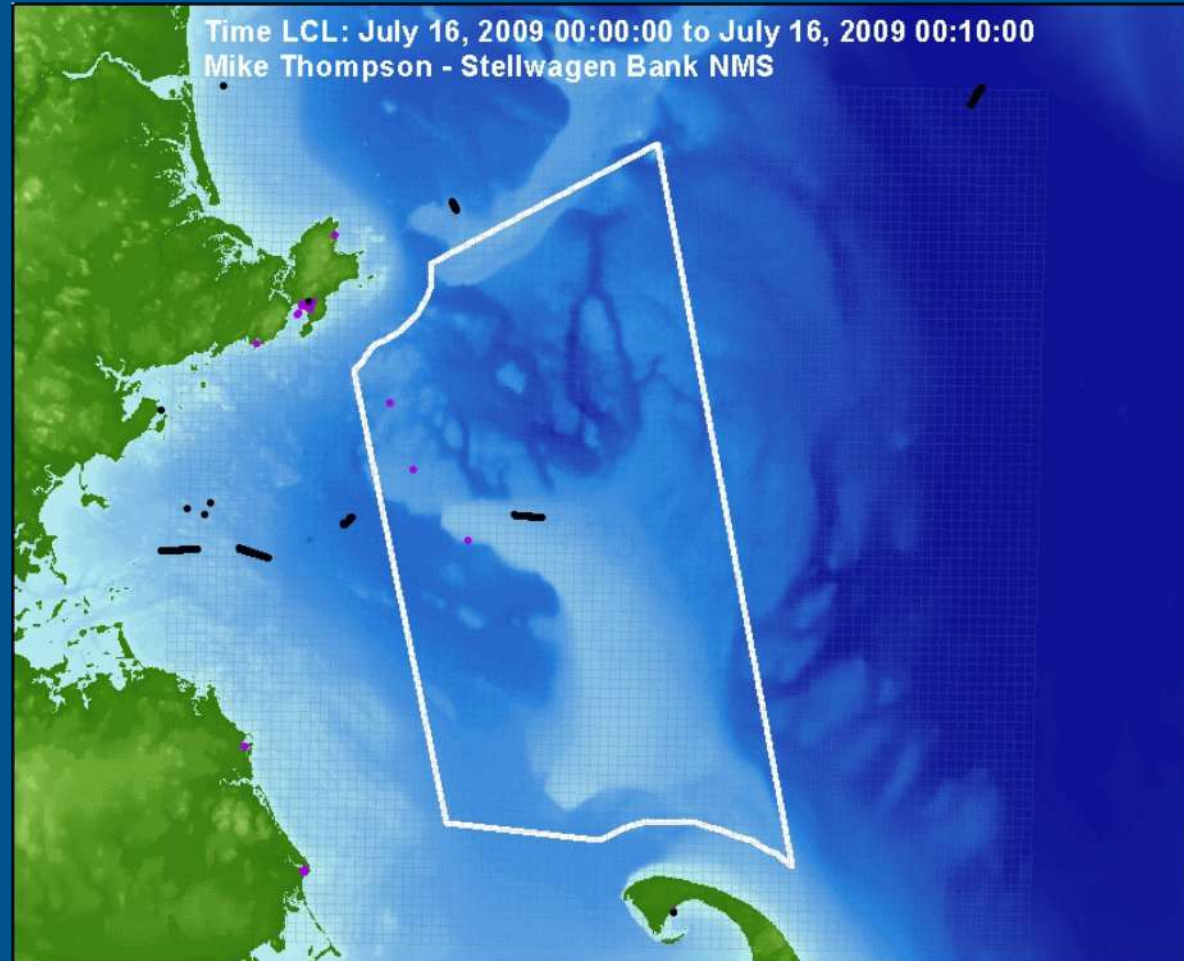


Whale  
Watch



Fishing

Time LCL: July 16, 2009 00:00:00 to July 16, 2009 00:10:00  
Mike Thompson - Stellwagen Bank NMS







Stellwagen  
is  
1 of the Top 10  
Places in  
The World  
to go  
Whale  
Watching



# Facts: Whale watching ecotourism

## **Start date:**

- East Coast WW started in 1975
- SBNMS designated in 1992
- WW guidelines implemented in 1999

**Duration:**  
Decades and ongoing

**Value:**  
USD\$182 million in total annual output

(Schwarzmann et al. 2020)





# Partners

- Whale Watching Companies
- NOAA Fisheries Service
- Whale and Dolphin Conservation Society
- Center for Coastal Studies in Provincetown, Massachusetts
- Allied Whale (whale ID) at College of the Atlantic

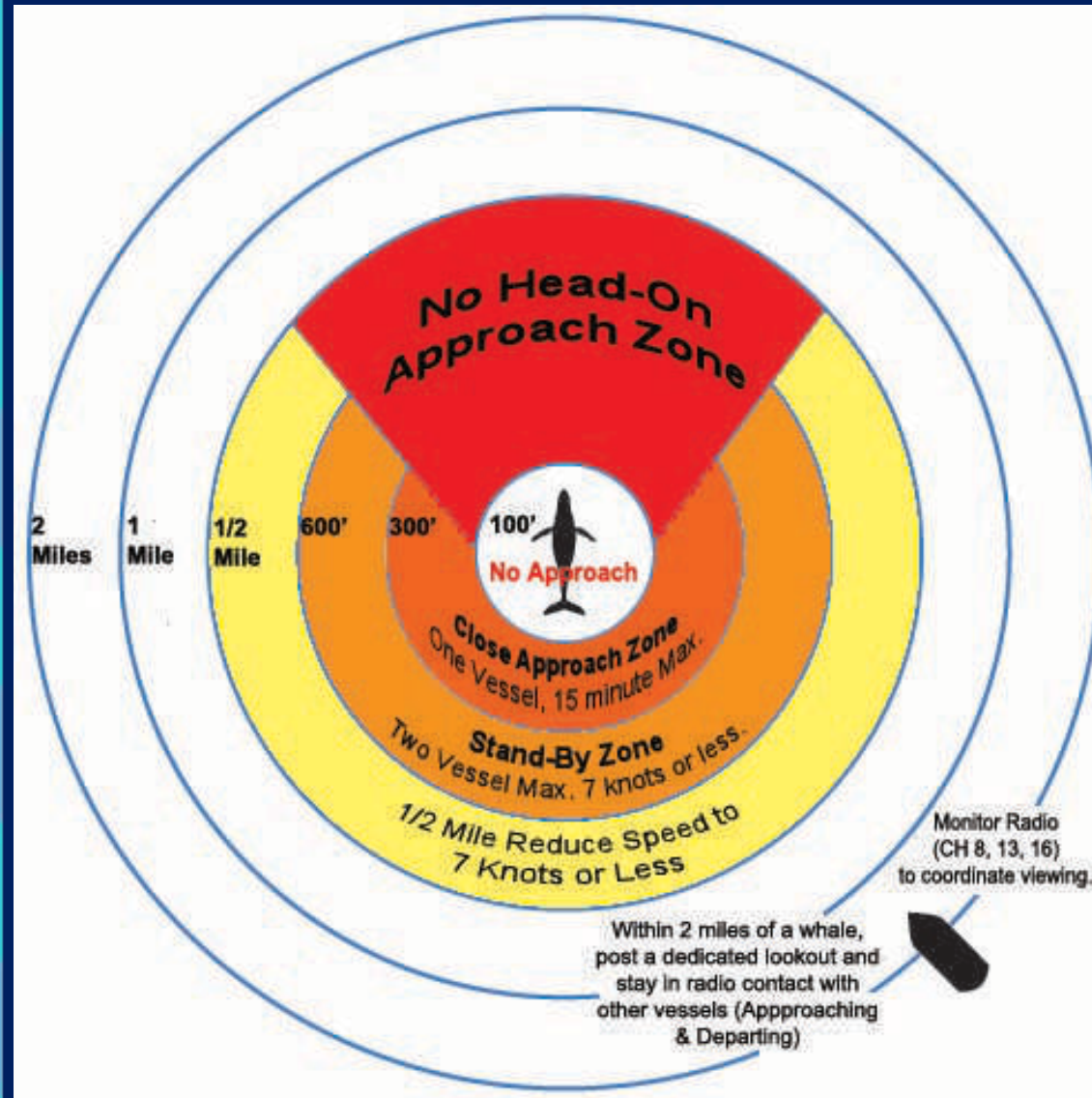


# Risks and Opportunities

- Entanglement in fishing gear
- Shipstrike
- Behavioral disturbance
- Noise disturbance
- Photo ID of flukes
- Messaging on conservation and climate change to a captive audience
- Platforms for collecting other data (temperature, seabirds)
- Eyes on the water everyday reporting phenomena and issues (standby entangled whale)







Voluntary WW  
Guidelines

Only regulation  
is to stay 500  
yards away from  
right whales





WHALE AND  
DOLPHIN  
CONSERVATION



NOAA FISHERIES

A voluntary recognition and education program that promotes responsible whale watching through the use of marketing incentives.

### Key elements:

- Adhere to whale watching guidelines
- Annually train staff
- Inform passengers of whale protection laws
- Report and stand-by entangled animals
- Complete an ocean stewardship project
- Promote participation in program
- Annual on-board evaluation



# Salt's Family Tree



Salt

**Crystal** – 1980  
**Halos** – 1983  
**Thalassa** – 1985  
**Brine** – 1987  
**Bittern** – 1989  
**Salsa** – 1991  
**Tabasco** – 1998  
**Mostaza** – 2000  
**Wasabi** – 2003  
**Soya** – 2006  
**Sanchal** – 2008  
**Zelle** – 2010  
**Epsom** – 2014  
**Sriracha** – 2016

**Skeeter** – 1992  
**Etch-A-Sketch** – 1998  
**Shishkabob** – 2001  
**Yosemite** – 2003  
**Divingboard** – 2005  
**Flyingfish** – 2007  
**Beachgrass** – 2009  
**Vendetta** – 2012  
**Liana** – 2014  
**Unnamed** – 2016  
**Unnamed** – 2016  
**Unnamed** – 2016  
**Migration** – 2008  
**Unnamed** – 2011  
**Toboggan** – 2014  
**Unnamed** – 2016  
**Unnamed** – 2016



# Beyond Borders Sister Sanctuary Program

International Marine Sanctuaries are joining together to protect a migratory marine mammal species on both ends of its range — the endangered Humpback Whale.



Credit: Mike Thompson



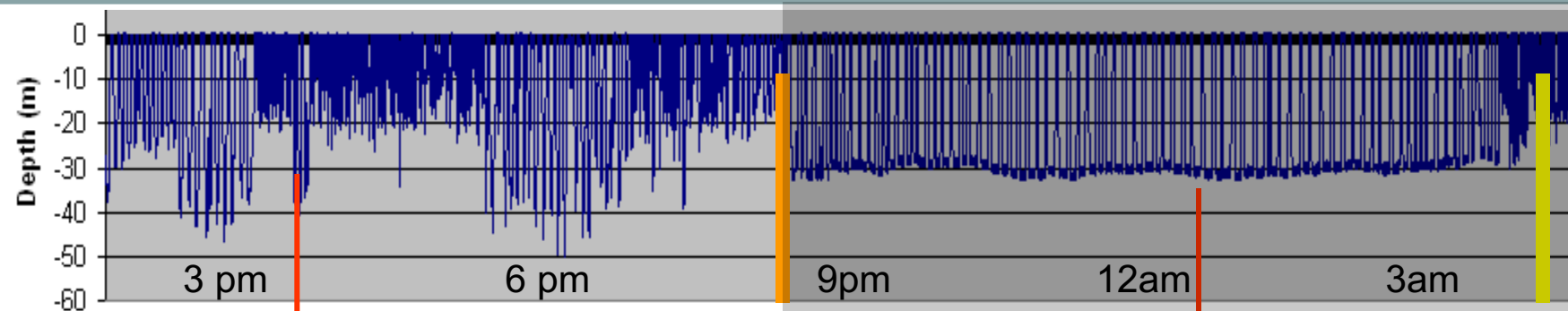
# 15 years of tagging humpbacks





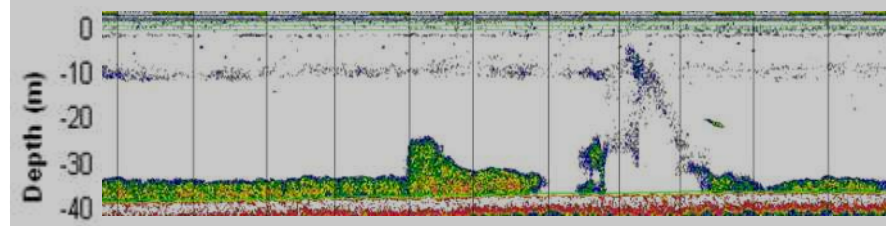
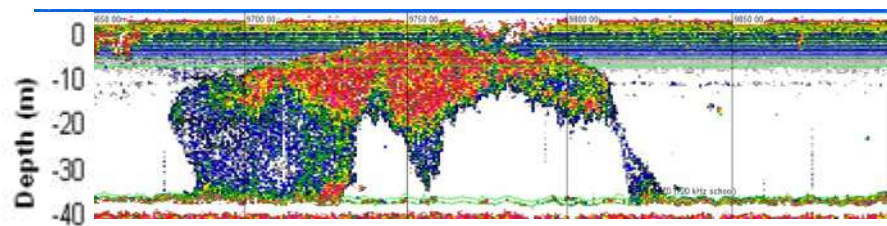
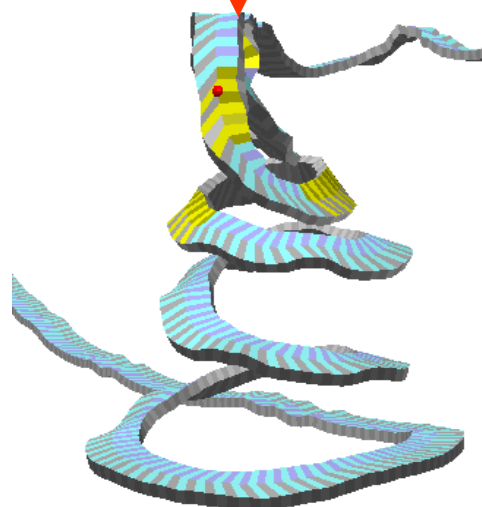


National Marine Sanctuaries  
National Oceanic and Atmospheric Administration



Day

Night







## Considerations

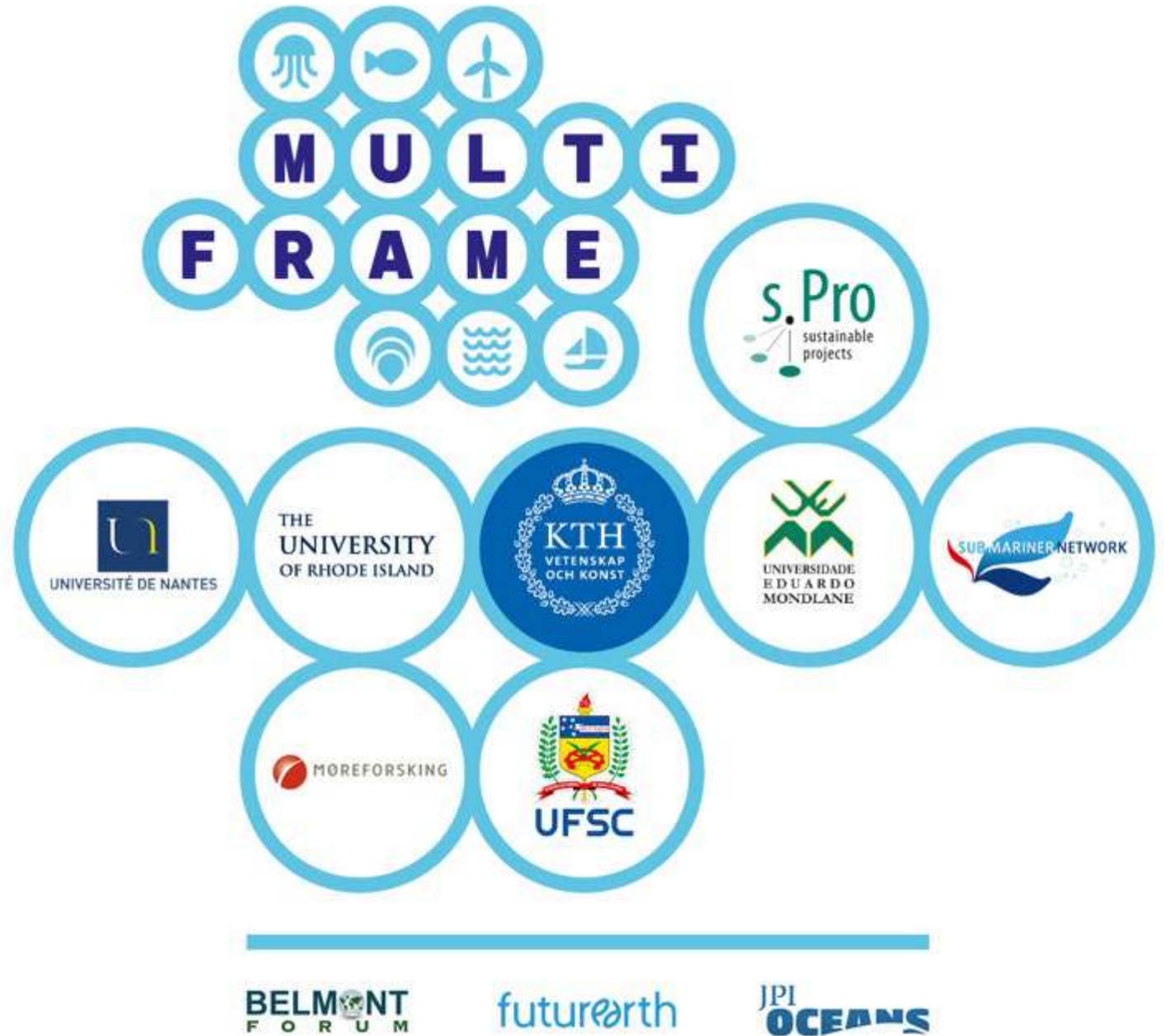
1. MULTIFRAME space is inherently a shared space; therefore combining uses needs to be considered
2. Platforms of opportunity for conducting research and outreach to the public
3. Process for determining compatibility of uses with resource protection
4. Explicit and transparent trade-off analyses



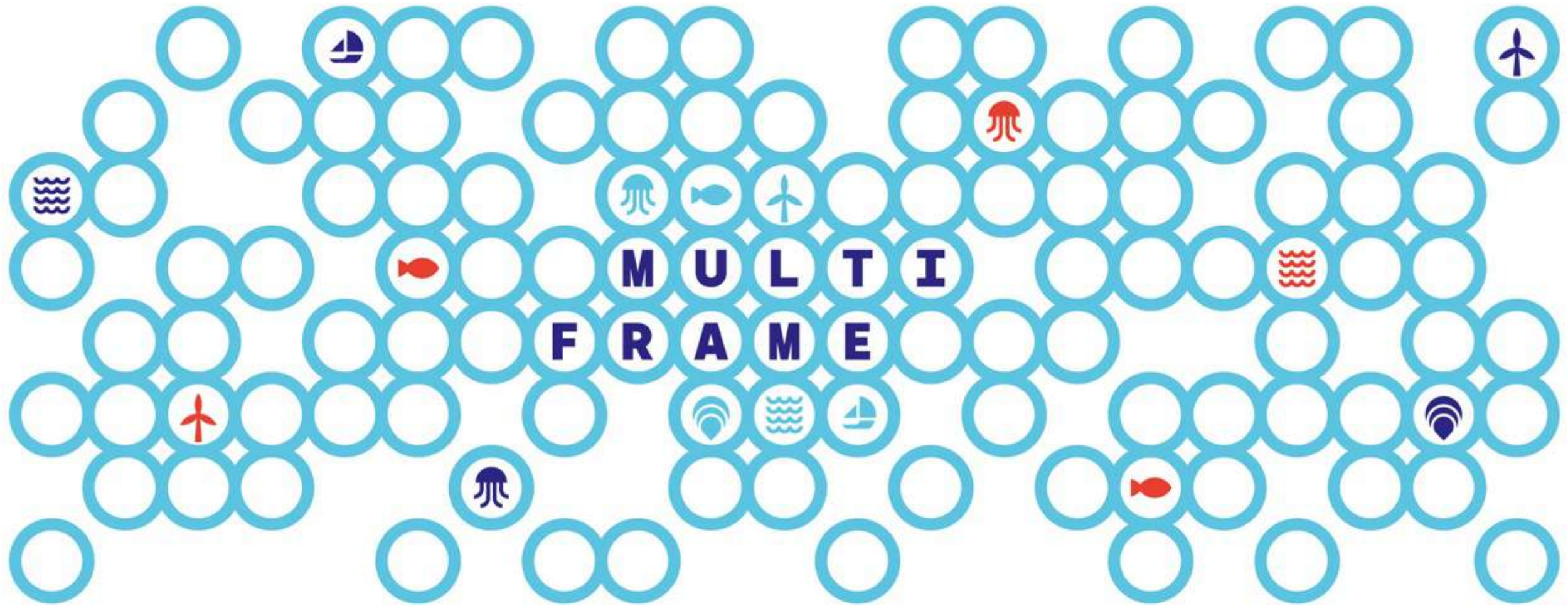
Artist: Tom W. Freeman, 2014

# Thank you!

Contact:  
[Ben.Haskell@noaa.gov](mailto:Ben.Haskell@noaa.gov)







# The Rich North Sea

Using offshore wind farms as an opportunity for nature enhancement

First MULTI-FRAME webinar: *How is ocean multi-use understood and defined worldwide?* 4 December 2020

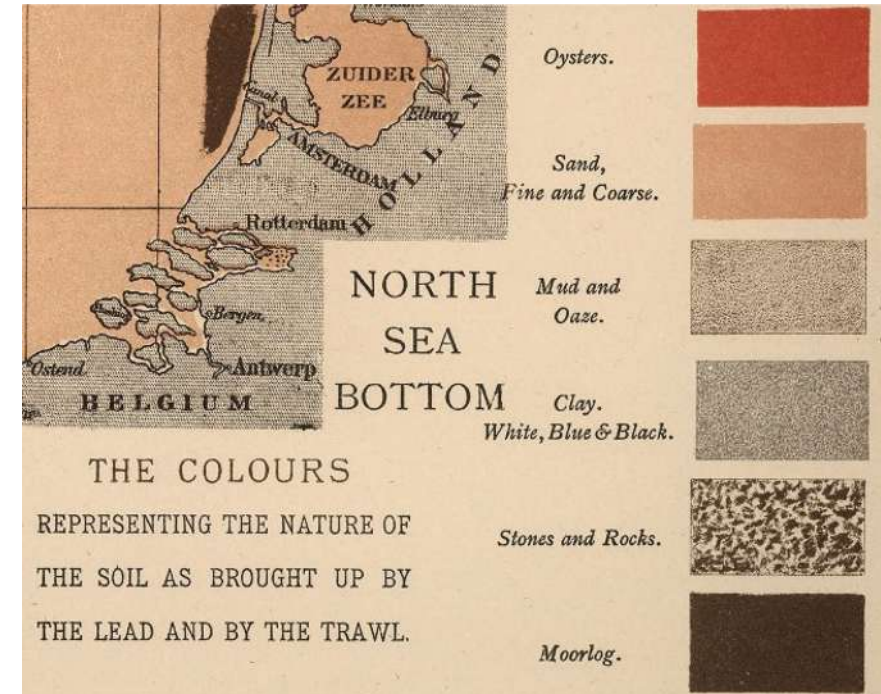
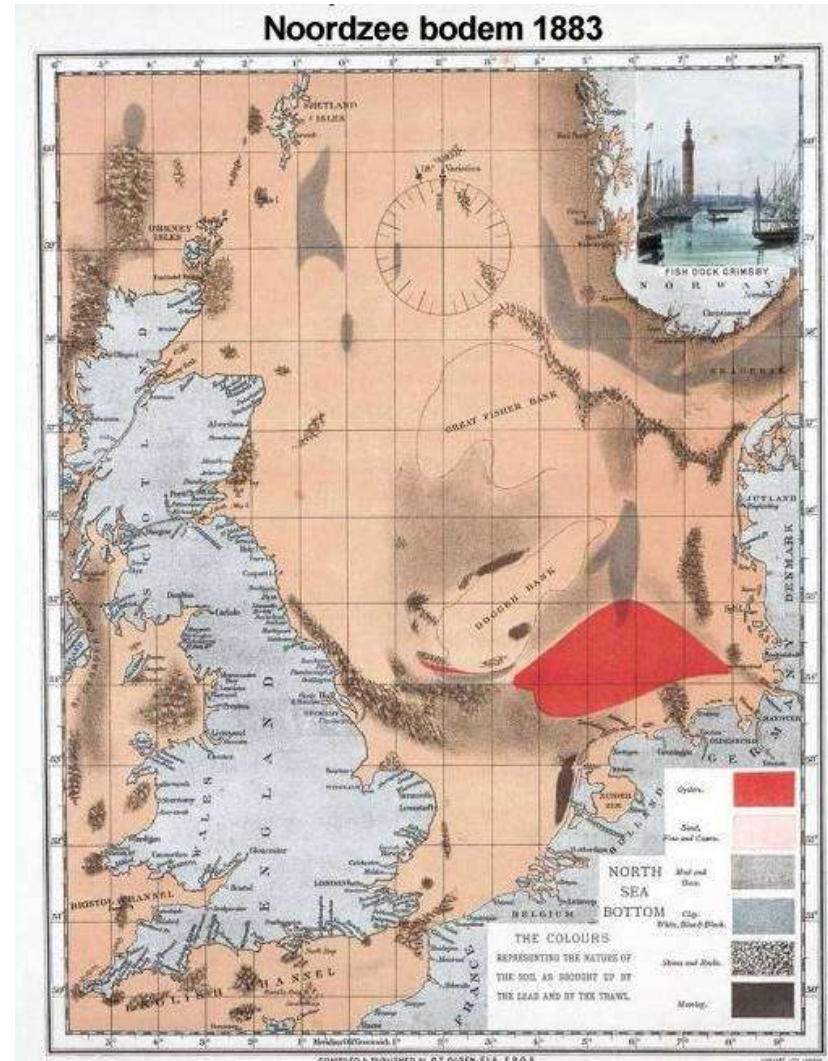




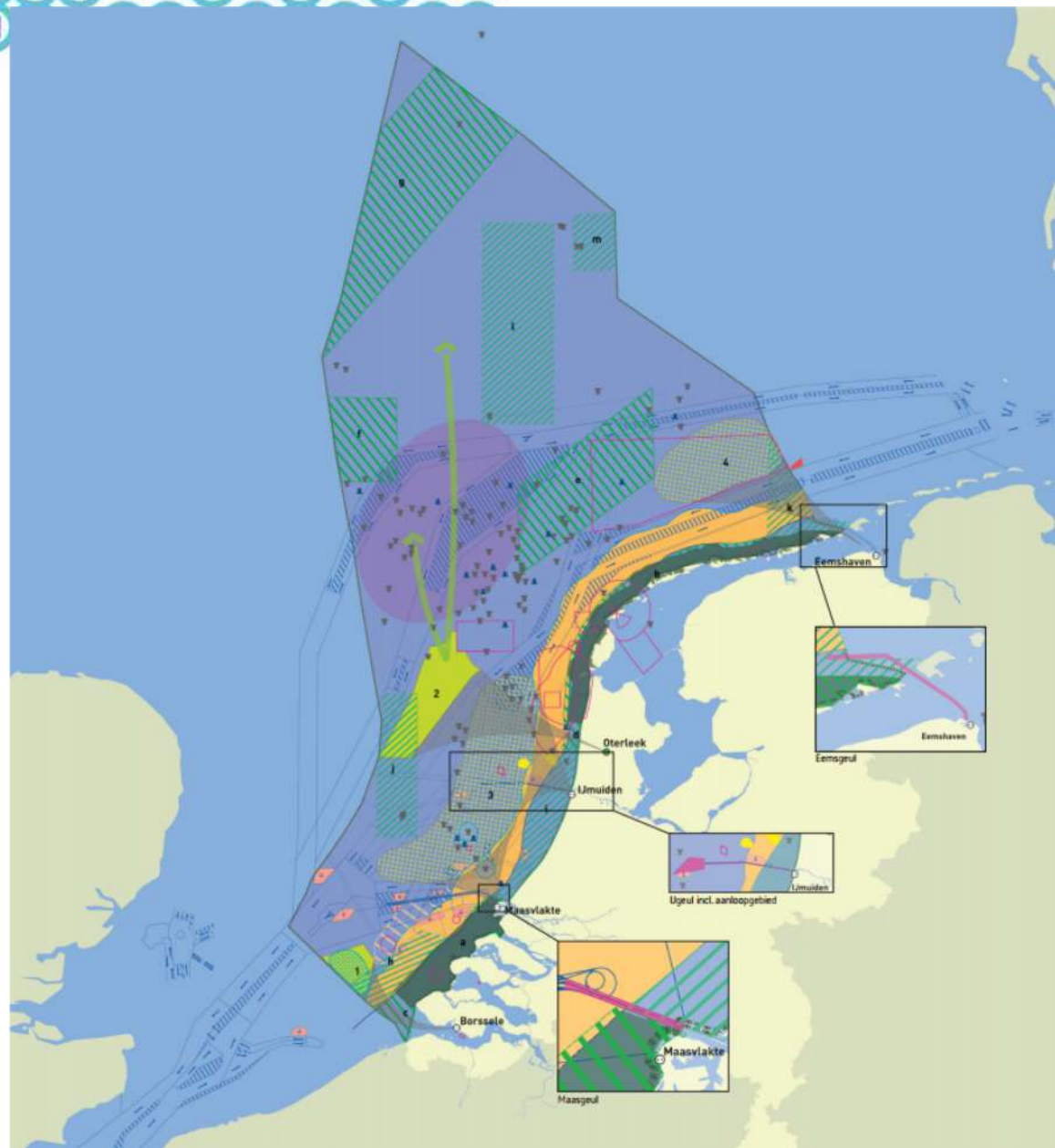


Why?

Olsen 1883



Why?



kaart 25

## Noordzee beleidskeuzes structuurvisiekaart

- basis
  - grens territoriale wateren (12 mijlsgrens) doorgaande NAP -20 m dieptelijn
- scheepvaart infrastructuur
  - begrenzing verkeersscheidsstelsels ankergebieden
  - verkeersscheidsstelsels separatiezone
  - clearways
  - zoekgebied ankergebieden voor Eemshaven (die in de Duitse EEZ liggen)
  - geulen: aanpassing in studie
- platforms voor olie- en gaswinning
  - platforms
  - onderwaterplatform
- zandwinning
  - reserveringsgebied voor suppletie- en ophoogzand
  - reserveringsgebied voor beton- en metselzand
- defensie
  - oefengebieden (incl. munitiestortplaats)
- marien ecologisch systeem
  - ecologische hoofdstructuur
  - aan te wijzen Natura 2000 gebieden
  - aangewezen Natura 2000 gebieden
  - andere mogelijk ecologisch waardevolle gebieden
  - a Voordella
  - b Noordzeekustzone
  - c Vlake van de Raan
  - d Uitbreiding Noordzeekustzone
  - e Friese Front
  - f Klaverbank
  - g Doggersbank
  - h Zeeuwse Banken
  - i Kustzee
  - j Bruine Bank
  - k Borkumse Sienen
  - l Centrale Oestergronden
  - m Gasfonteinen
- windenergiegebieden
  - windturbineparken
  - windenergiegebied
  - zoekgebied windenergiegebied, te concretiseren vóór 2010
  - 1 Borssele
  - 2 Urmuiden
  - 3 zoekgebied Hollandse kust
  - 4 zoekgebied ten noorden van de Waddeneilanden
- Aanlandingspunt voor windenergie
  - Borssele; Eemshaven; Urmuiden; Maasvlakte
  - Oterleek (mogelijk aanlandingspunt)
  - zoekgebied windenergiekabels naar aanlandingspunt
- duurzame energie op langere termijn
  - kerengebied olie- en gaswinning, optie grootschalige CO<sub>2</sub>-opslag na 2020
  - ontwikkelingsrichting duurzame energie na 2020
  - zoekgebied eiland voor energie-opslag en -productie pilots CO<sub>2</sub> opslag vóór 2015





## Pilot project in OWF Luchterduinen 2018-2019



### Negative results:

- The oyster cages were not stable enough

### Positive results:

- Oyster survival above the sand
- Larvae in the water column





# The Rich North Sea: February 2020





# Projects

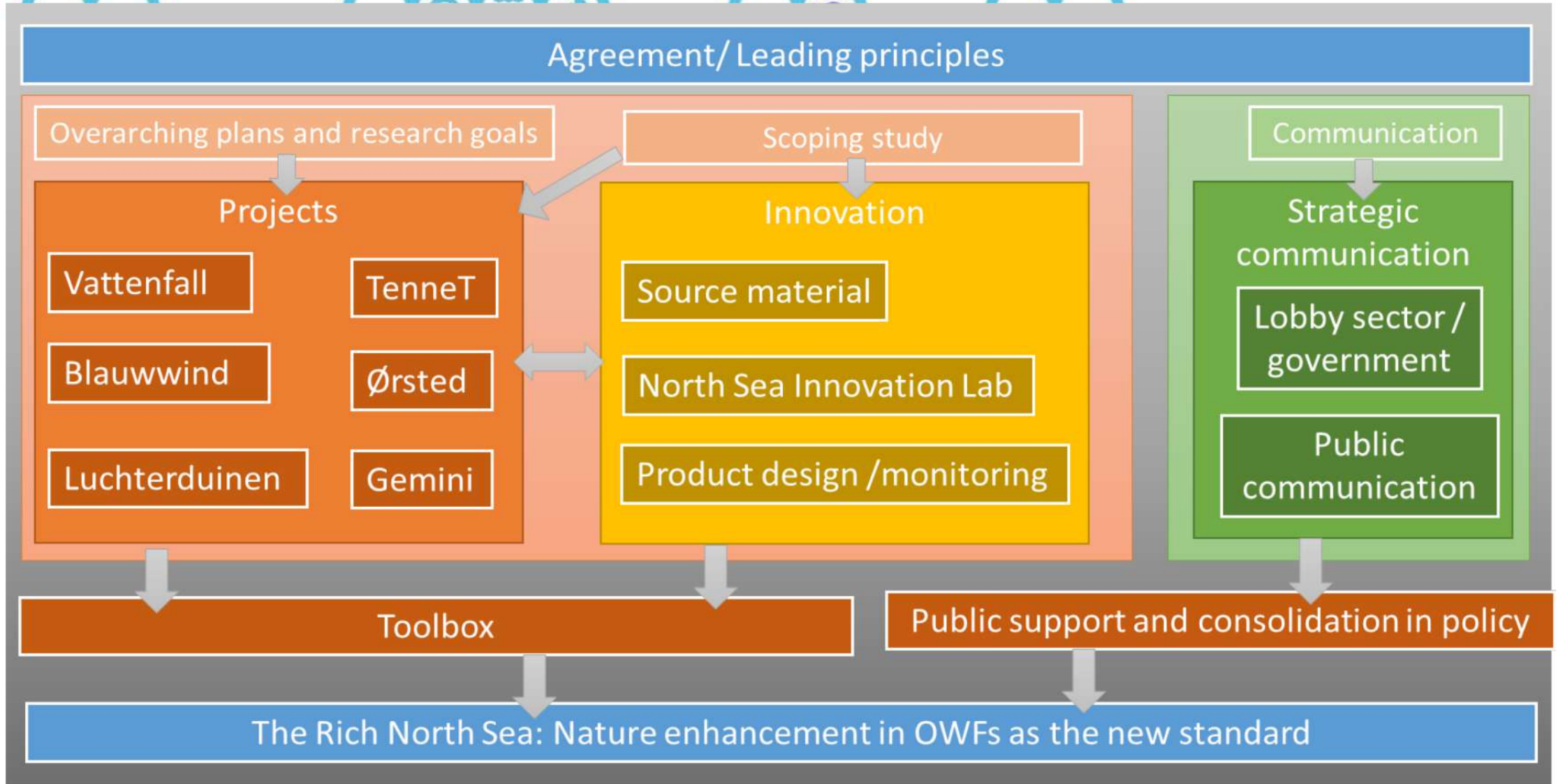
1. Gemini
2. Eneco
3. Vattenfall
4. North Sea Innovation Lab
5. Ørsted
6. Blauwwind
7. TenneT
8. Flat oyster hatchery

## Internationaal

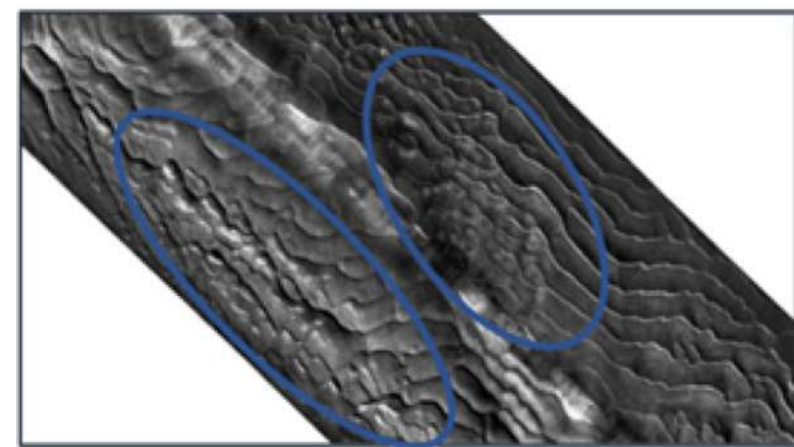
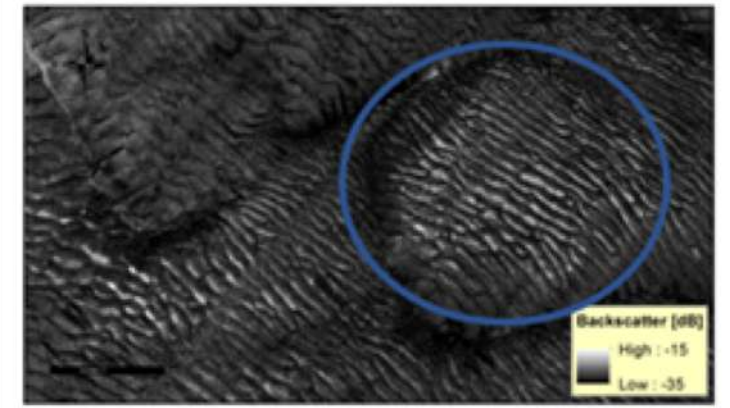
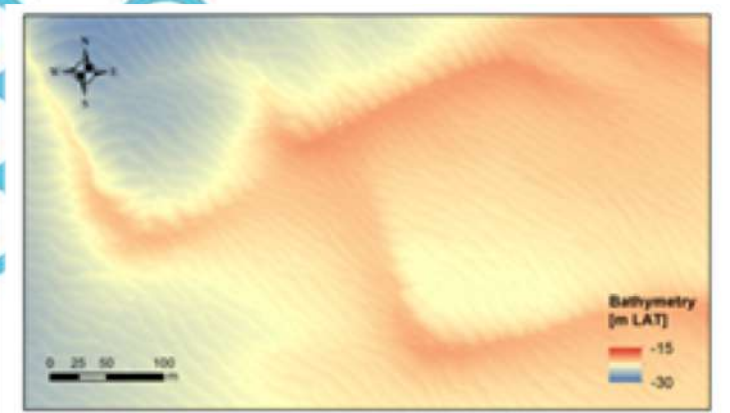
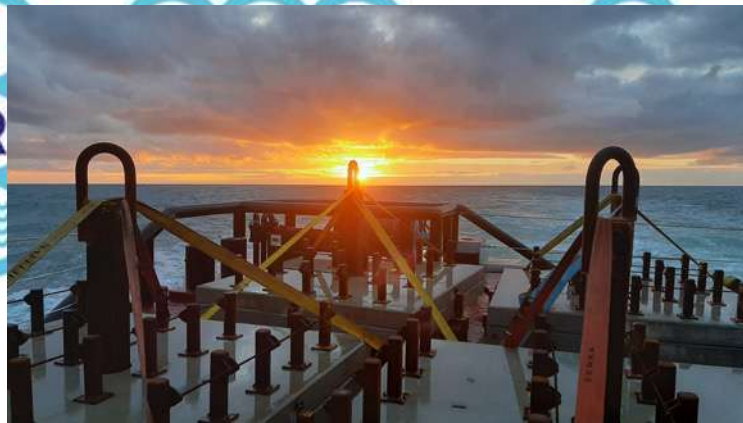
- Belgium
- UK



# MULTIFRAME

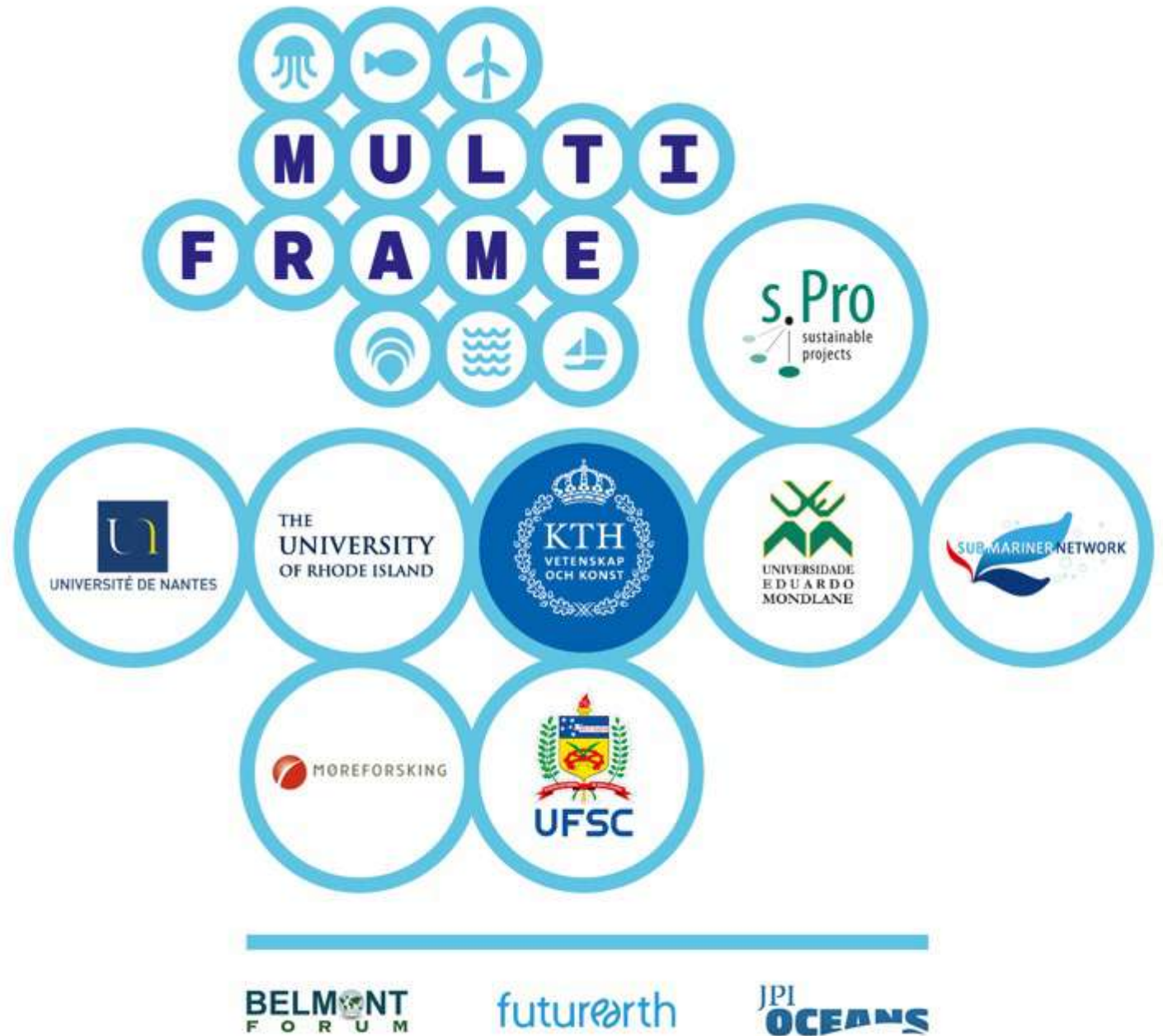


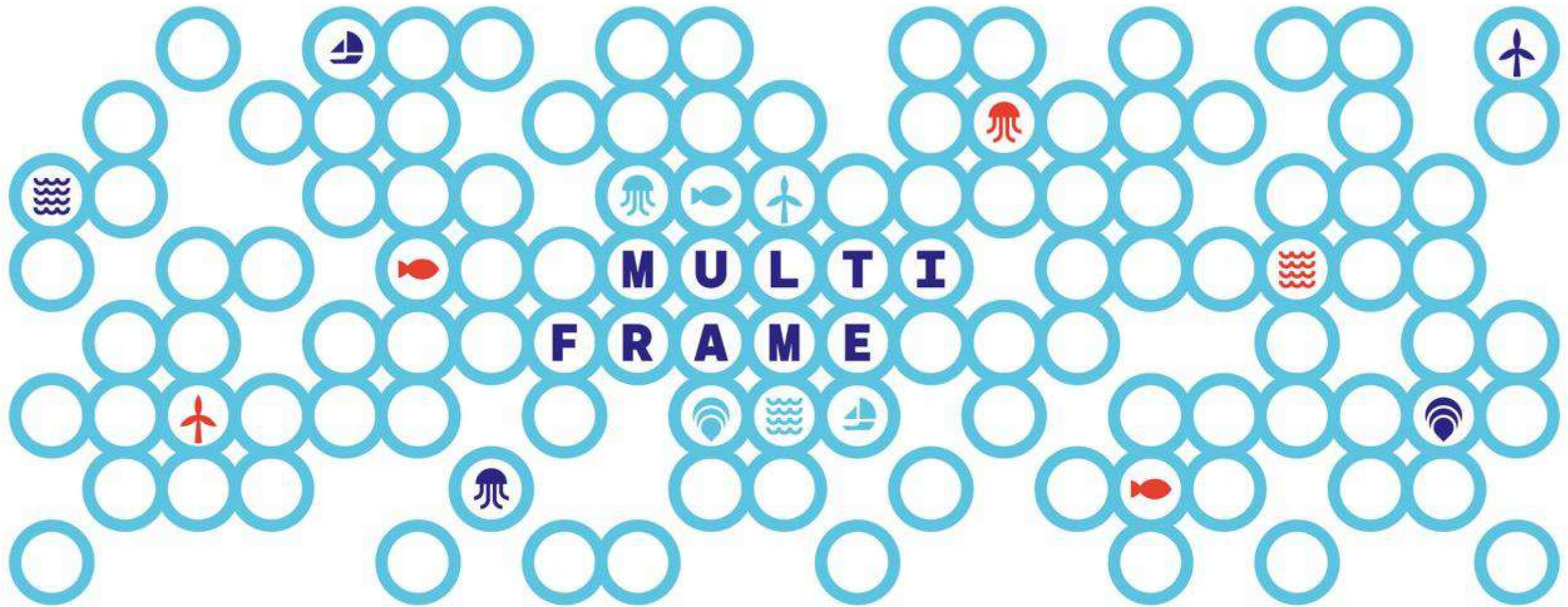






XXXXX

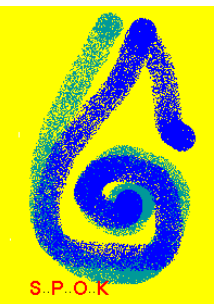




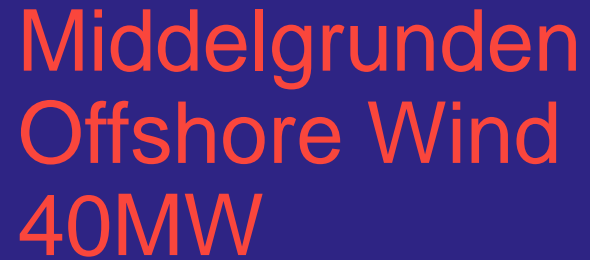
# Offshore wind and tourism

By Hans Chr. Soerensen, PhD and Julia Fernández Chozas, PhD

First MULTI-FRAME webinar: *How is ocean multi-use understood and defined worldwide?* 4 December 2020







Established 2000 as the largest offshore wind farm in the World.

## Two owners each 50%:

## A Cooperative with 8,550 members





## Aims:

- A. How did it start; the role of the cooperative.
- B. Can it be used in other countries/offshore sites?
- C. Why do we not see this combination at other sites?
- D. The plans for more multiuse at Middelgrunden Wind.



# How did it start



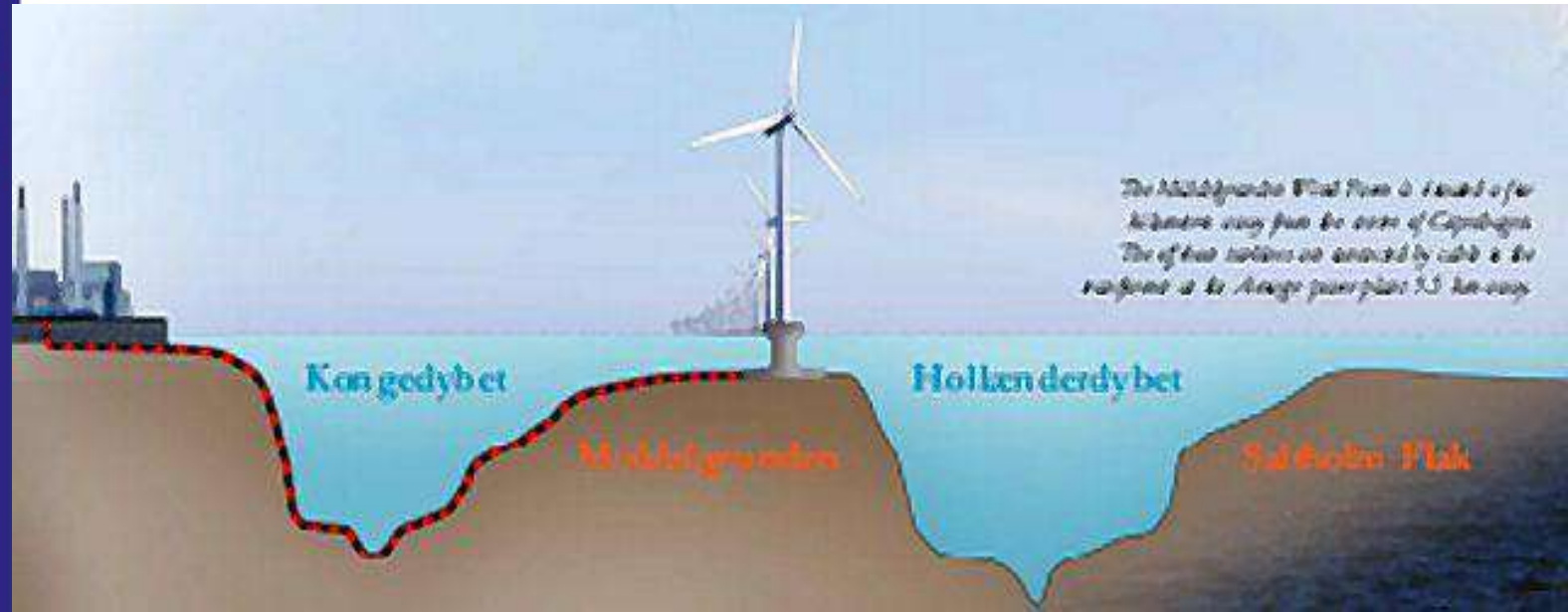


## An old tradition for wind cooperatives

Owners have been invited to visit their wind farm 3rd Sunday in June (windmill day).

We started already during the construction phase having 1600 people on the building site.

At Middelgrunden we have 150-200 people every 2 years on a sailing trip including climbing the turbine.







# Universities learned about visiting

Copenhagen gives easy access  
to an offshore wind farm either  
with a larger boat or with a RIB  
boat

The information about visiting  
has been spread to Universities.





Some trips only have a look into the turbine or wants through international developers to know “everything” – right: does vibrations from the turbine kills the fish?







... and some of  
them wants to  
climb

It is now both students and  
companies involved in the wind  
industry





Can it be used in other countries/offshore sites?





The UNITED Project is helping to solve these issues.







## Why do we not see this combination at other sites?

- Offshore farms are far away from the shore.
- The legal, safety rules and insurance questions have not been solved.
- Large developers don't see it as a promotion for wind energy – getting people involved.
- The UNITED Project can help





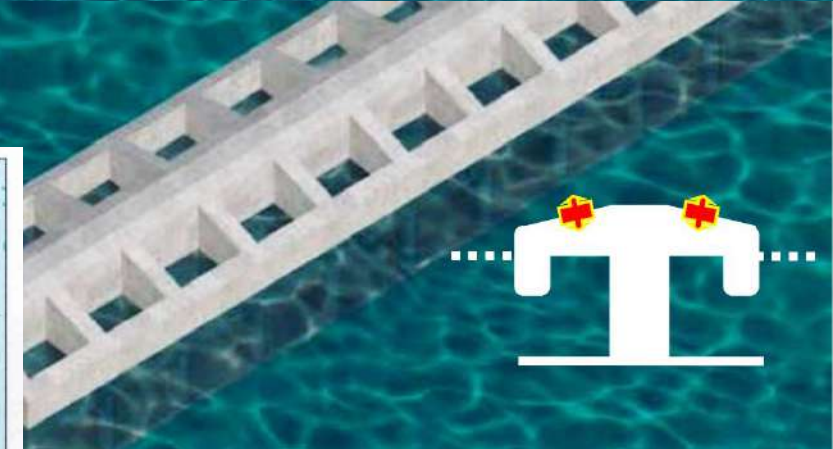
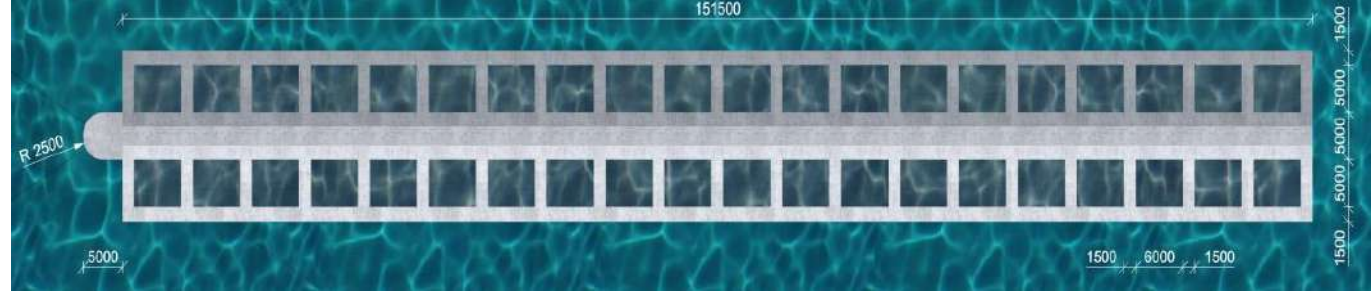
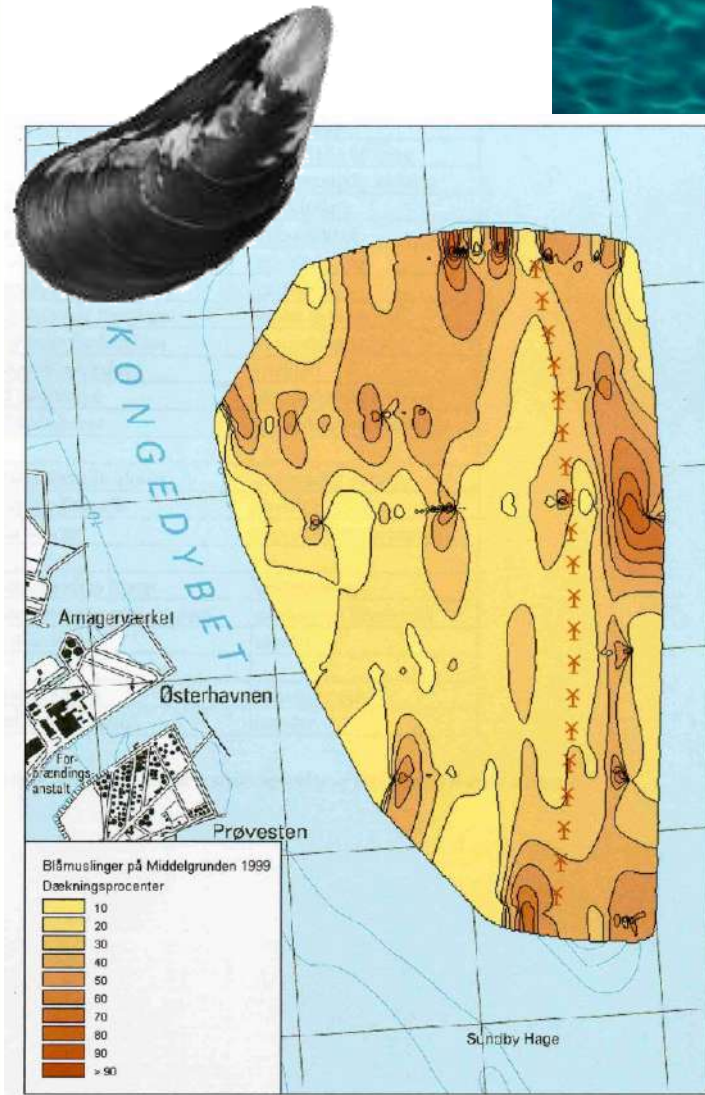
# The plans for more multiuse at Middelgrunden Wind





# We are investigating

- Divers want to use the site for a diving school as the site is interesting and have the right depth for international recognition (certificate).
- Some wave developers want to demonstrate small prototypes close to the city.
- Utilizing the mussel growth to be checked.

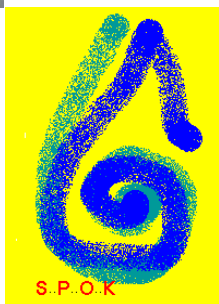




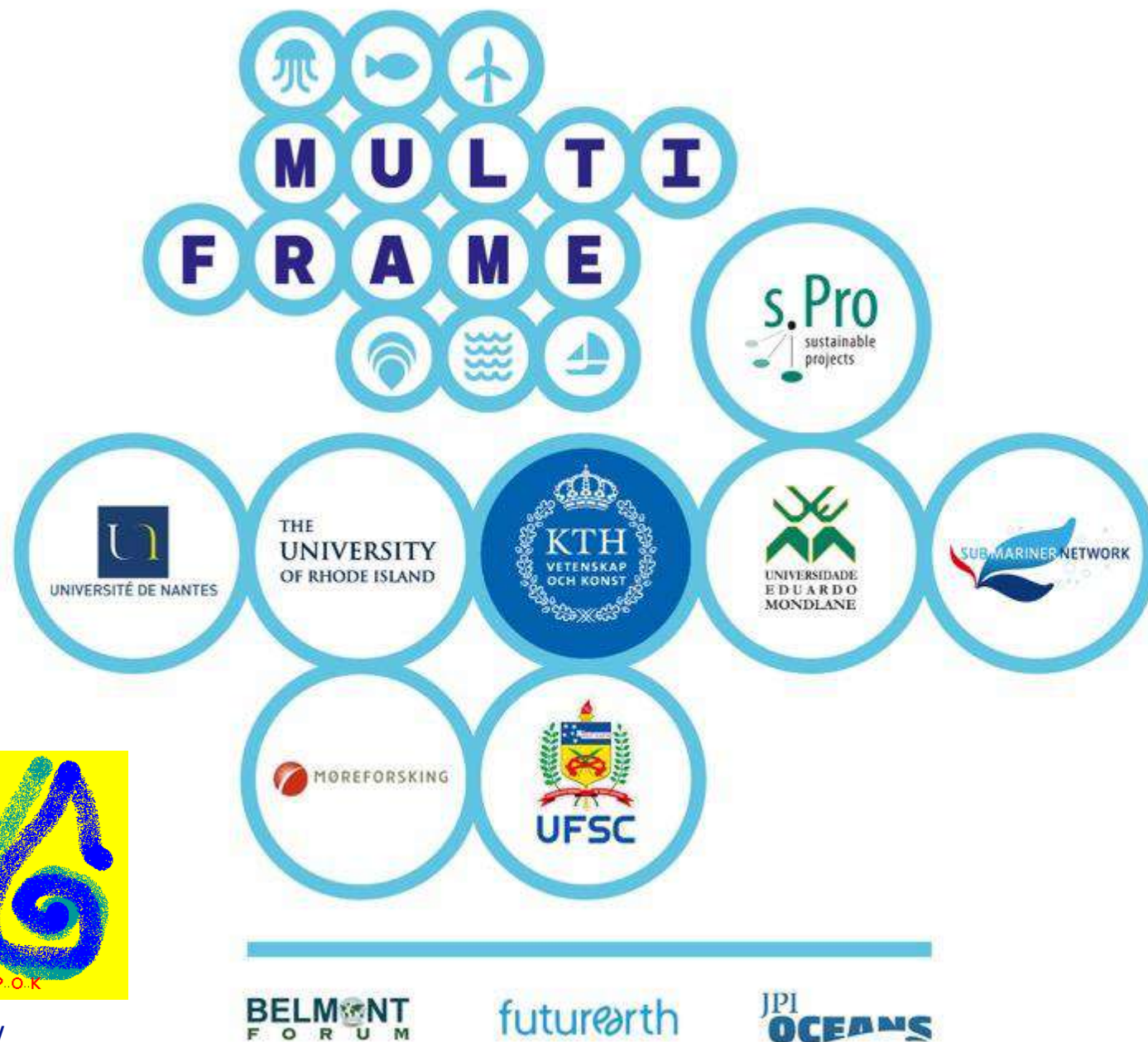
Thank you for  
your attention.  
Contacts:

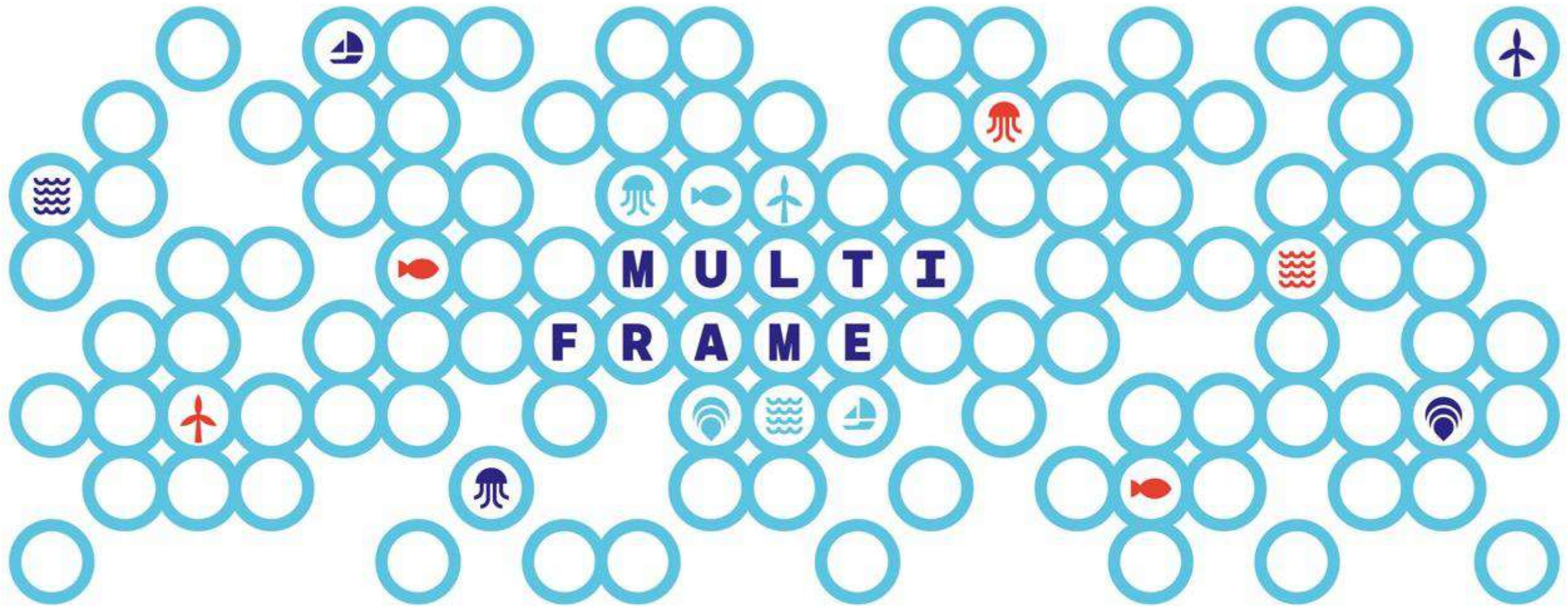


consult@spok.dk  
and  
julia.fernandez.chozas  
@gmail.com



Source: <https://www.h2020united.eu/>  
and [www.middelgrunden.dk](http://www.middelgrunden.dk)





# Pescatourism, an operational multi-use

AGLIA

First MULTI-FRAME webinar: *How is ocean multi-use understood and defined worldwide?* 4 December 2020





# The Atlantic area

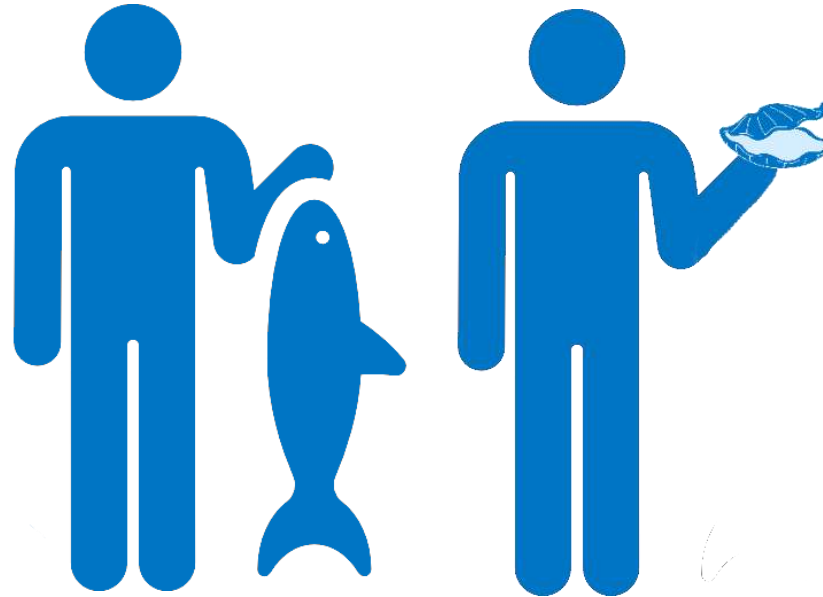




## Association du Grand Littoral Atlantique / Big Atlantic Coast Association

- NGO created in 1988
- Composed by

Professional  
organizations of



Fishermen

Shellfish farmers

Oyster



Mussel



©Wikimedia

Regional collectivities



L'Aglia, trois Régions pour promouvoir la pêche et l'aquaculture

## Association du Grand Littoral Atlantique / Big Atlantic Coast Association

- Functions



A « **Think tank** » & a **network** for fishing and shellfish farms activities

- Conferences, technical meetings



To create and manage **projects & studies**

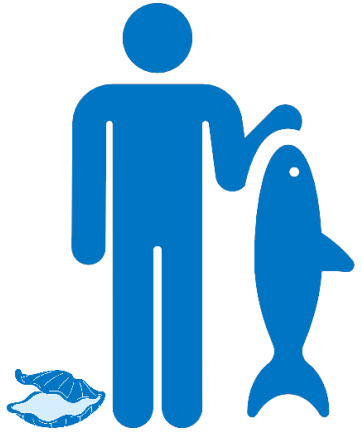


# Activities of diversification





## Why diversification ?

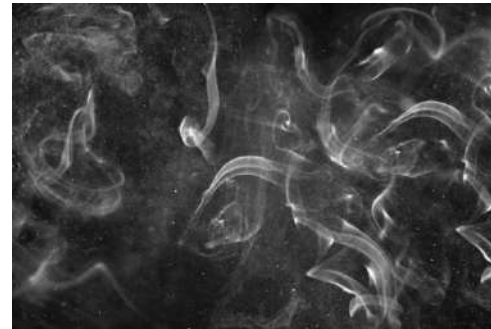


- Causes

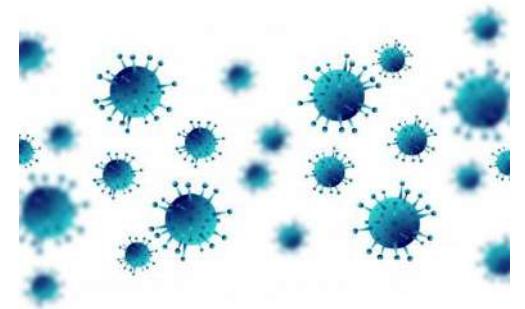
### FISHERIES RESSOURCES INSTABILITY



Climate change



Water pollution

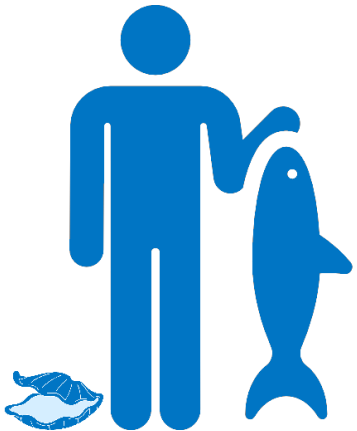


Illness of (shell)fish

### PRICES EVOLUTION

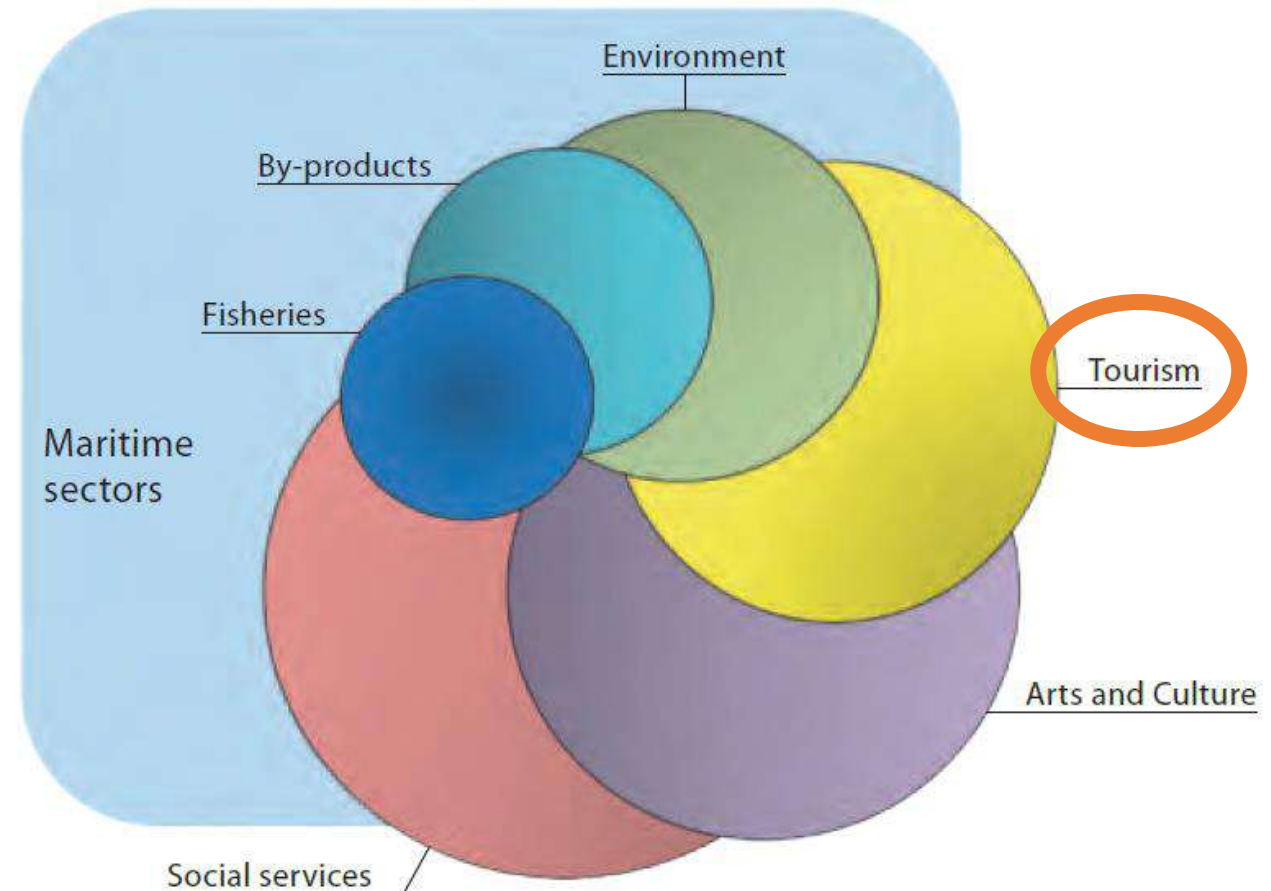


## What is diversification ?

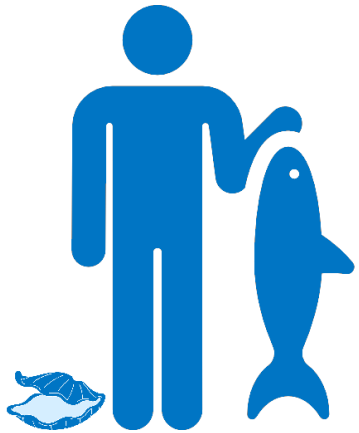


- **An extension** of the activity of production
- **Various ways**

For more : [FARNET Guide #5](#)



## What is diversification ?



### Tourism

- In order to promote theirs **skills** and **products**
- To **tourists**, **local clients**, and **local shoppers**



PESCATOURISM



VISITS OF  
EXPLOITATIONS



TASTING



## Diversification of maritime activities with tourism



PESCATOURISM



VISITS OF  
EXPLOITATIONS



TASTING

- En 2017
  - **169** workers
  - > 80% **shellfish farmers**
- Mostly in the South : Bassin d'Arcachon – Val d'Eyre
  - **54%** of sea workers in France who practice pescatourism were in Bassin d'Arcachon

Bretagne

20% - 34 pros

Pays de la Loire

6% - 10 pros

Pays Marennes-  
Oléron

4.5% - 7 pros

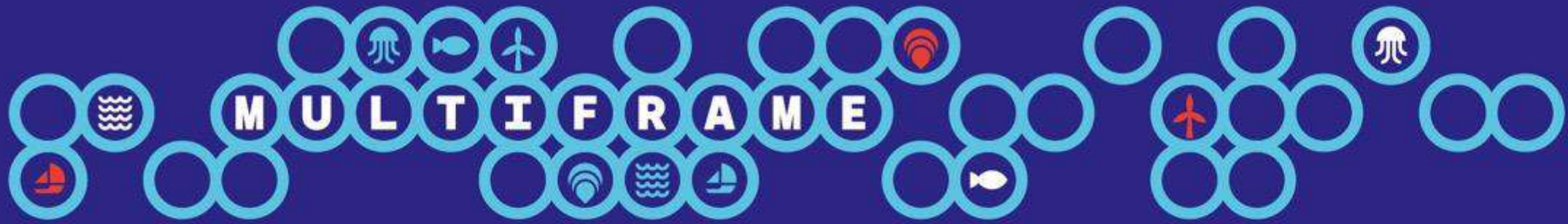
Bassin d'Arcachon –  
Val de l'Eyre

64% - 108 pros

Côte basque/Sud  
Landes

5,5% - 9 pros





# The pescatourism





# Challenges

In Atlantic area  
in France

- To be authorized & recognized as an activity of diversification
- Implementation of laws
- To be a sustainable activity of diversification



## Pescatourism : various development in Europe



## History of pescatourism in France & AGLIA projects

### Before 2005

- TRADITIONAL AND INFORMAL PRACTICE
- No specific legislation

### 2006

- BAN OF THE PESCATOURISM
- Death of Michelin

### 2007 - 2011

- Analysis of the legal framework (and perspectives) for touristic activities
- LOCAL TRIALS IN FRANCE

### 2011

- PESCATOURISM = RECOGNIZED
- National laws : Div [230](#), [226](#) et [227](#) + Instruction 139 DIRM SA



## Pescatourism, always linked to maritime activities in France



PESCATOURISM

### French legislative definition

- To take passengers on board a **professional boat** (fishing or shellfish farm activity)
- To discover the **job** and the **environment**
- During the **daily activity** of the professional, at usual **workplaces**.

**X** They don't have the right to touch **fishing gear** or **products**

The definition is different in Italy > Ittiturismo



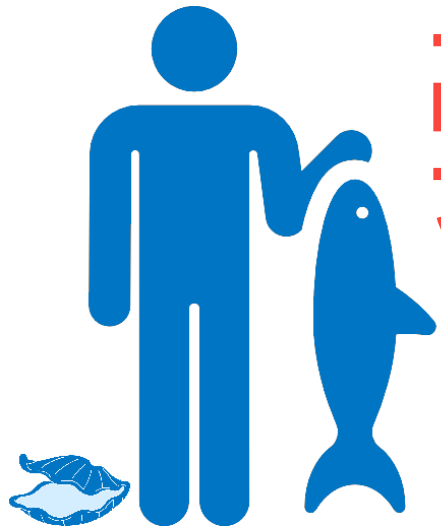


# Challenges

In Atlantic area  
in France

- To be authorized & recognized as an activity of diversification
- **Implementation of laws**
- To be a sustainable activity of diversification

## How to be able to do pescatourism ?



**At first** : To have an **authorization** to have passengers onboard

- To have a boat answering to **safety standards**
- Local conditions



**Each time** : to let the **coastguard** know who are the passengers

- To send **embarkation form** to them

**The interpretation of laws depends on Vessel Safety Centre**  
**→ Penal responsibility of inspectors is engaged**

## History of pescatourism in France & AGLIA projects

### Before 2005

- TRADITIONAL AND INFORMAL PRACTICE
- No specific legislation

### 2006

- BAN OF THE PESCATOURISM
- Death of Michelin

### 2007 - 2011

- Analysis of the legal framework (and perspectives) for touristic activities
- LOCAL TRIALS IN FRANCE

### 2011

- PESCATOURISM = RECOGNIZED
- National laws : Div [230](#), [226](#) et [227](#)  
+Instruction 139 DIRM SA

### 2011 – now

- VARIOUS DEVELOPMENTS AT LOCAL SCALE
- Challenges
  - Interpretation of laws ?
  - Package with other activities linked with tourism (//ittiturismo) ?





# Challenges

In Atlantic area  
in France

- To be authorized & recognized as an activity of diversification
- Implementation of laws
- To be a sustainable activity of diversification
  - Example of success : Arcachon

## Bassin d'Arcachon : History

- Local trial in 2010
- **Ecotourism** :
  - a **collective** approach
  - on a territory with a lot of **amenities**
  - to value **cultural and environmental patrimony**
  - with an offer about **maritime activities** to tourists



## Bassin d'Arcachon : Why the success ?

- Territorial strategy
  - **Price** : 45€ + for discount for kids (-50%) & family
  - **Kids** with parents > 8 years old
  - **Shellfish farmers** : **tasting** included
  - Booking by calling the pro.

European fund



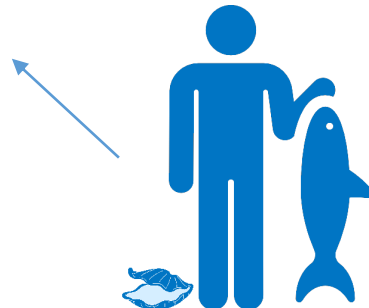
Organizations of maritime activities



Territorial communities



1 charter to sign



Promotion (Posters, brochures, annual kickoff)

Fishermen or shellfish farmers





**AVEC UN OSTRÉICULTEUR OU PÊCHEUR**

**EMBARQUEZ!**

**DU BASSIN D'ARCACHON**

**IBA**

www.bassin-arcachon.com

## VIS MA VIE


### D'OSTRÉICULTEUR OU DE PÊCHEUR SUR LE BASSIN

Toute l'année, embarquez le temps d'une marée sur les bateaux des ostréiculteurs ou pêcheurs professionnels. Une manière très originale de voir le Bassin avec ceux qui y travaillent, été comme hiver.


On découvre la culture de l'huître et la pêche dans le Bassin ou à l'Océan.


### ATTENTION, LA MARÉE N'ATTEND PAS !


Départ en fonction des horaires des marées du jour et du port : il peut être à 6 h comme à 16 h par exemple.


 **PENSEZ-Y !** Nos professionnels vous proposent des bons cadeaux (anniversaires, fête des pères...).

### PRÉVOIR UNE TENUE ADAPTÉE

 Pour les jours de beau temps : un chapeau et un coupe-vent.

 Pour les jours nuageux et venteux : un bon pull et un ciré.

 Quelque soit la météo, prévoir des bottes ou des chaussures résistantes à l'eau à semelles rigides.

 Pour les marées longues (telles que les sorties à l'Océan) : prévoyez que la météo peut vite changer en mer.



Le professionnel sera toujours là pour bien vous conseiller !



## LISTE DES PROFESSIONNELS À CONTACTER

### MARÉE DE PÊCHE PROFESSIONNELLE INTRA BASSIN & Océan

Il ne s'agit pas de pêche à la ligne que seuls les guides professionnels de pêche sont habilités à proposer.

NOM	PRÉNOM	NOM DU NAVIRE	PASSAGERS	PORT D'ATTACHE	LANGUES	TÉLÉPHONE	E-MAIL
CASTING	Christophe	FORCE TRANQUILLE	de 1 à 3	Arcachon - Port de pêche		06 69 73 01 34	footcooter@orange.fr
LAMOUROUS	David	LA PAIX DU CIEL II	de 1 à 4	Arcachon - Port de pêche		06 76 95 26 26	davidlamourous@orange.fr
BRAU	Jean-Marie	LE MATHALIE	de 1 à 3	Andernos-les-Bains - Port ostréicole		06 30 32 79 98	jmbrlau@wanadoo.fr
BOICE	Pascal	AKISHATZ	de 1 à 2	Lège-Cap Ferret - Port de Grand Piquey		06 81 85 23 78	sophiepe@hotmail.fr
BOUCHER	Jean-Baptiste	YAN YAK II	1	Lège-Cap Ferret - Port du Canon		06 66 84 40 21	jbaptisteboucher@hotmail.fr
ANTON	Jérôme	ALBAN	de 1 à 2	Lège-Cap Ferret - Port de la Vigne		06 67 58 05 66	jerome.anton@bbox.fr
HERVE	Jean-Marc	TOI ET MOI IV	de 1 à 2	Lège-Cap Ferret - Port de la Vigne		06 07 99 46 40 06 74 67 30 97	jean-marc.herve@wanadoo.fr
NICHAUD	Christophe	KIKI II	de 1 à 2	Lège-Cap Ferret - Port de la Vigne		06 82 23 32 23	christophenichaud@orange.fr

(1) Ce pêcheur propose une marée de pêche intrabassin ou à l'océan avec franchissement des passes.

(2) Ce pêcheur propose une marée de pêche à l'océan, avec franchissement des passes (prévoir une sortie sur toute la journée).

### MARÉE OSTRÉICOLE

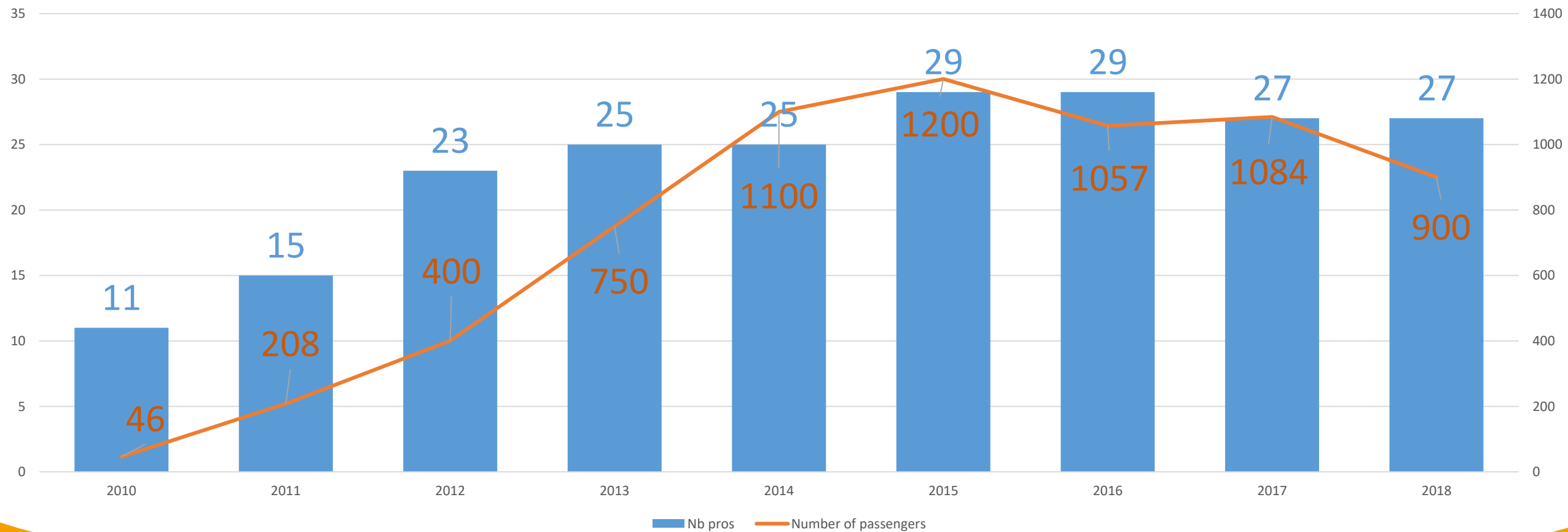
À certaines périodes, les ostréiculteurs vendent leurs huîtres sur les marchés ; les sorties le samedi et le dimanche ne sont alors pas possibles.

NOM	PRÉNOM	NOM DU NAVIRE	PASSAGERS	PORT D'ATTACHE	LANGUES	TÉLÉPHONE	E-MAIL
DUVIGNAC	Yann et Antoine	LES BARBOTS	de 1 à 4	Arcachon - Port de pêche / Gujan-Mestras - Port de la Barbottière		06 66 05 64 47	jay-carole@hotmail.fr
FOUCART	Lionel	ALIST-ER	de 1 à 5	La Teste de Buch - Digue Ouest		06 09 91 96 28	lacabane104@gmail.com
CONDON	Sébastien	ARGUIN / DEISHE DISER & AVANCA	de 1 à 5	Gujan-Mestras Port de La Hume / Port de Meyran		06 74 36 83 26	richessesadarguin@gmail.com
DURAU	Sébastien	NA KIWATO	de 1 à 4	Gujan-Mestras - Port de La Hume		06 96 03 20 29	capaurlange.lahume@gmail.com
LABAN	Olivier	MAR GAU 3	de 1 à 5	Gujan-Mestras - Port de Meyran		05 56 66 05 01	olivier-laban@orange.fr
DELSART	Dominique	LES TESTUTS	de 1 à 2	Gujan-Mestras - Port de Gujan		06 94 95 13 91	
D'HARTOY	Philippe	LES PETITES FOLIES	de 1 à 4	Gujan-Mestras - Port de Larros		06 29 43 39 83	contact@huîtrespetitesfolies.com
VIGIER	Fabrice	DESIR ET PASSION	de 1 à 4	Gujan-Mestras - Port de Larros		06 43 34 75 72 05 56 66 87 40	rouloutou@me.com
BINDIS	Jean-Gabriel	LE CASSERON	de 1 à 3	Gujan-Mestras Port du Canal / Arcachon - Port de pêche		06 99 48 82 94	binisgabriel@hotmail.fr
DURAU	Christophe et Caline	LE GAET MARI	de 1 à 4	Gujan-Mestras Port de la Barbottière Ouest		06 30 56 36 11 06 08 99 35 14	legaetmari@gmail.com
JAVENAUD	Nicolas	MACECAMA	de 1 à 4	Gujan-Mestras Port de la Barbottière Ouest		06 82 14 15 46	nicolas.javenaud@orange.fr
DENEUVILLE	Clément	PERLOSTRE	de 1 à 5	Andernos-les-Bains - Port ostréicole		06 77 71 12 81 06 69 23 74 80	perlostre@outlook.fr
NAUBO	Roman	SIBO	de 1 à 3	Andernos-les-Bains - Port ostréicole		07 50 95 79 91	roman.naubo@yahoo.fr
NOUBOS	Alexandra	SROCCO II	de 1 à 5	Andernos-les-Bains - Port ostréicole		06 80 31 94 54	cabanecostignol@live.fr
PRUNEY	Olivier	REVOLUTION	de 1 à 4	Andernos-les-Bains - Port ostréicole		06 65 14 39 78	olivier.prune@outlook.fr
ROUX	Jean-François	EMERALUDE	de 1 à 5	Andernos-les-Bains - Port ostréicole		05 56 82 17 82	cseonle.roux@orange.fr
TOP	Olivier	RIO EBRO	de 1 à 4	Andernos-les-Bains - Port ostréicole		05 42 56 24 67	
DAUGES	Eric	EOLE	de 1 à 5	Arès - Port ostréicole		06 15 45 67 09	eric.dauges.presse@gmail.com
MARTIN	Nelson	ROCKY II	de 1 à 5	Arès - Port ostréicole		06 89 17 05 99	martinmiron@hotmail.fr
PAISQUET	Alain et Luc	LET IT BE	de 1 à 4	Arès - Port ostréicole		06 75 29 48 59	loicpasquet0505@gmail.com



## Bassin d'Arcachon : Datas

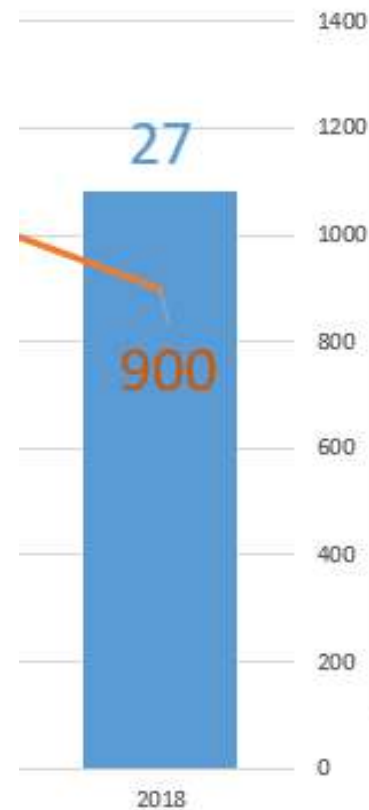
Evolution of pescatourism at Arcachon Val d'Eyre



## Bassin d'Arcachon : Datas

In 2018 :

- Most were **shellfish farmers (19 sea workers)**
- **+ 6 pros** out of « On Board ! »

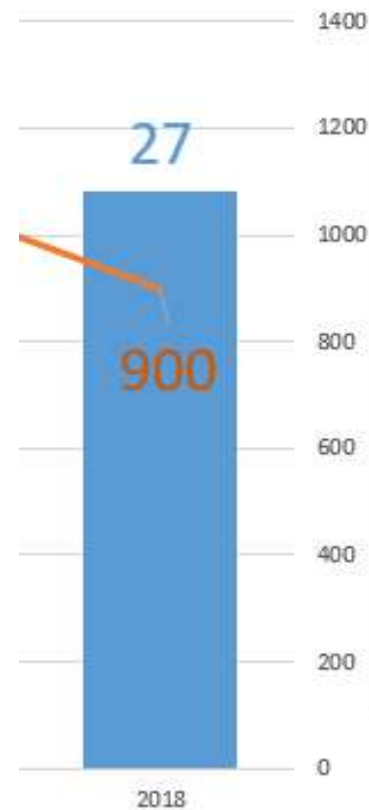




## Bassin d'Arcachon : Datas

- Drop in visitors is explained
  - **8 pros** haven't done pescatourism.
  - They work on **other activities** (fishing, tasting...) or they **lacked of time** (to clean shellfish farms, ...)
  - **Many requests were unmet.**

For more :  
[Conclusions for 2018](#), DLAL  
 FEAMP BARVAL



## Motives of fishermen and shellfish farmers

### Pescatourism, a way :

#### To value their job & unknow products

- More visibility
- Price of their products is justified (painfulness of work)

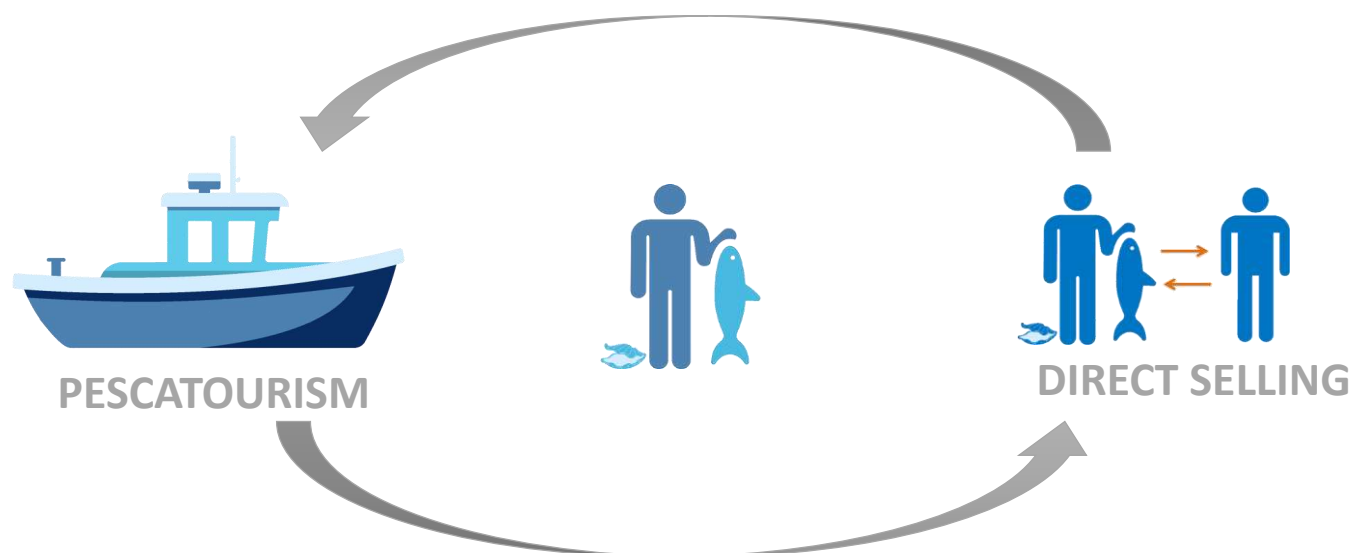
#### To have human contact

- Alone on a daily basis
- +++ to retain or to find new clients

#### To have a small suply of income

- Not the 1st motive with pescatourism

➔ Positive effects increased if they practice **direct selling**





# Basic conditions to develop pescatourism

- Environmental & cultural patrimony
- Strong maritime identity or potential

- Local collectivities
- Fundings
- Organizations of sea workers

- Boat answering to safety standards
- Sea conditions (ex. easier inside a bay, near to the coast and usually quiet conditions)





# Conclusion

## Socio economics effects

**Community of sea workers** are reinvigorated

- Integrated in territorial life
- A way to make these professions more attractive

**The profit from tourism** is linked with **characteristics** of the territory

- Anchoring of this economy reinforced

Combined with other  
touristic activities of  
diversification, it can help  
maritime activities in  
France



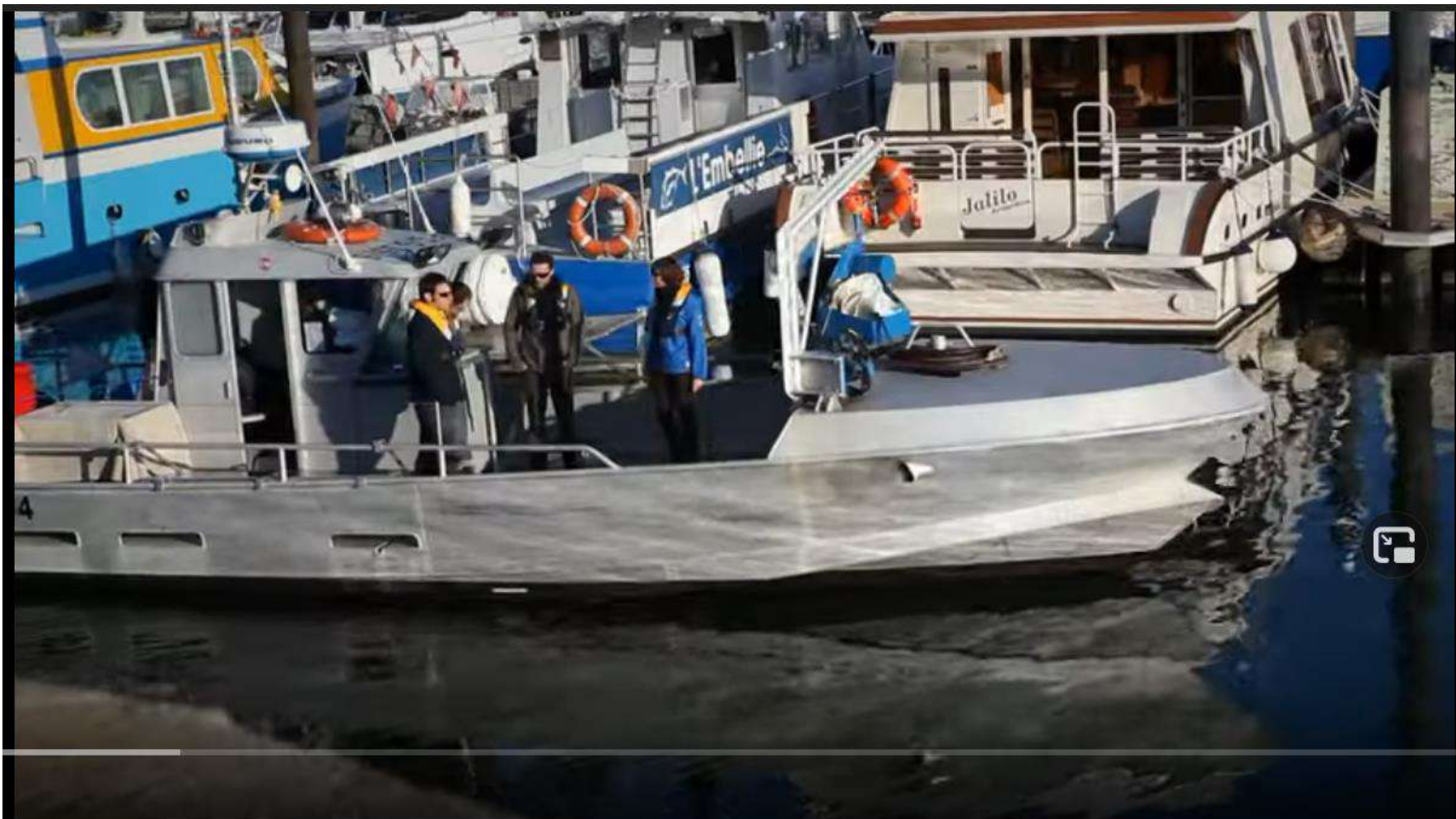
©SIBA





©SIBA





Ex. Arcachon Val de l'Eyre :

- Evènement « [kick off](#) » ou le [point of view from pros](#)
- [Reportage](#)
- [Reportage shellfish farmers](#)
- [Seasonal statement](#)
- [Clip](#) v longue [v courte](#)

## QUESTIONS :

